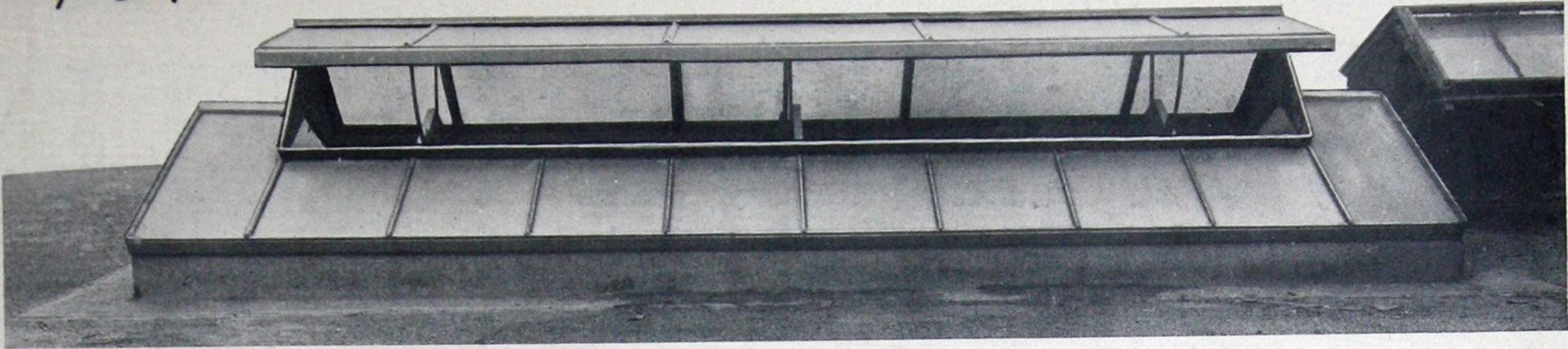


49-16.

A. I. A. No. 695.24



# A Skylight

## *That Ventilates Just as Efficiently as it Daylights*

The perfect skylight for garages, laundries, factories, shops, foundries, schools and public buildings, for it provides perfect ventilation, always under absolute control, yet with no loss of daylight

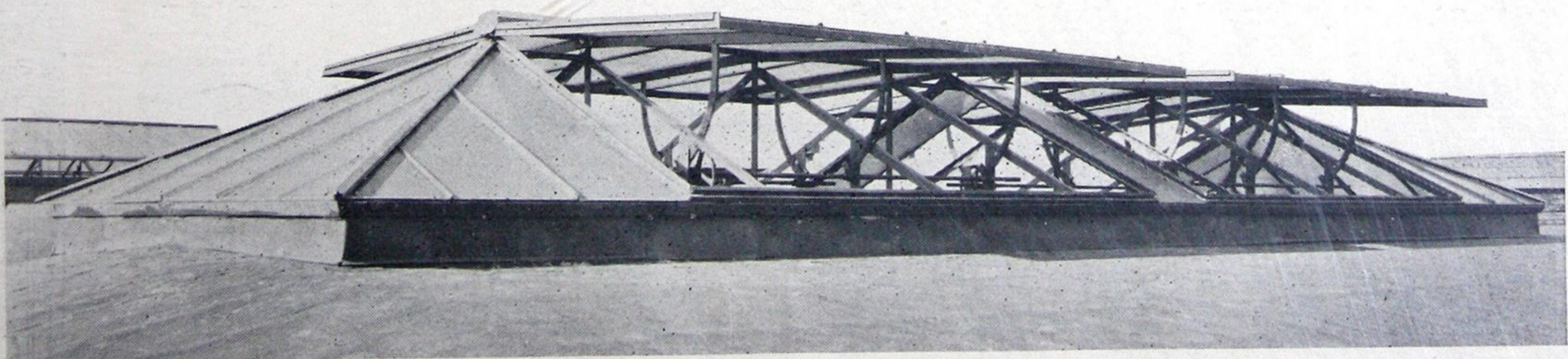
## 3-WAY VENTILATING SKYLIGHTS

*Made of 18 Gauge Galvanized Steel*

**AMERICAN 3 WAY-LUXFER PRISM COMPANY**

1303-1311 South 55th Court  
CICERO, ILLINOIS

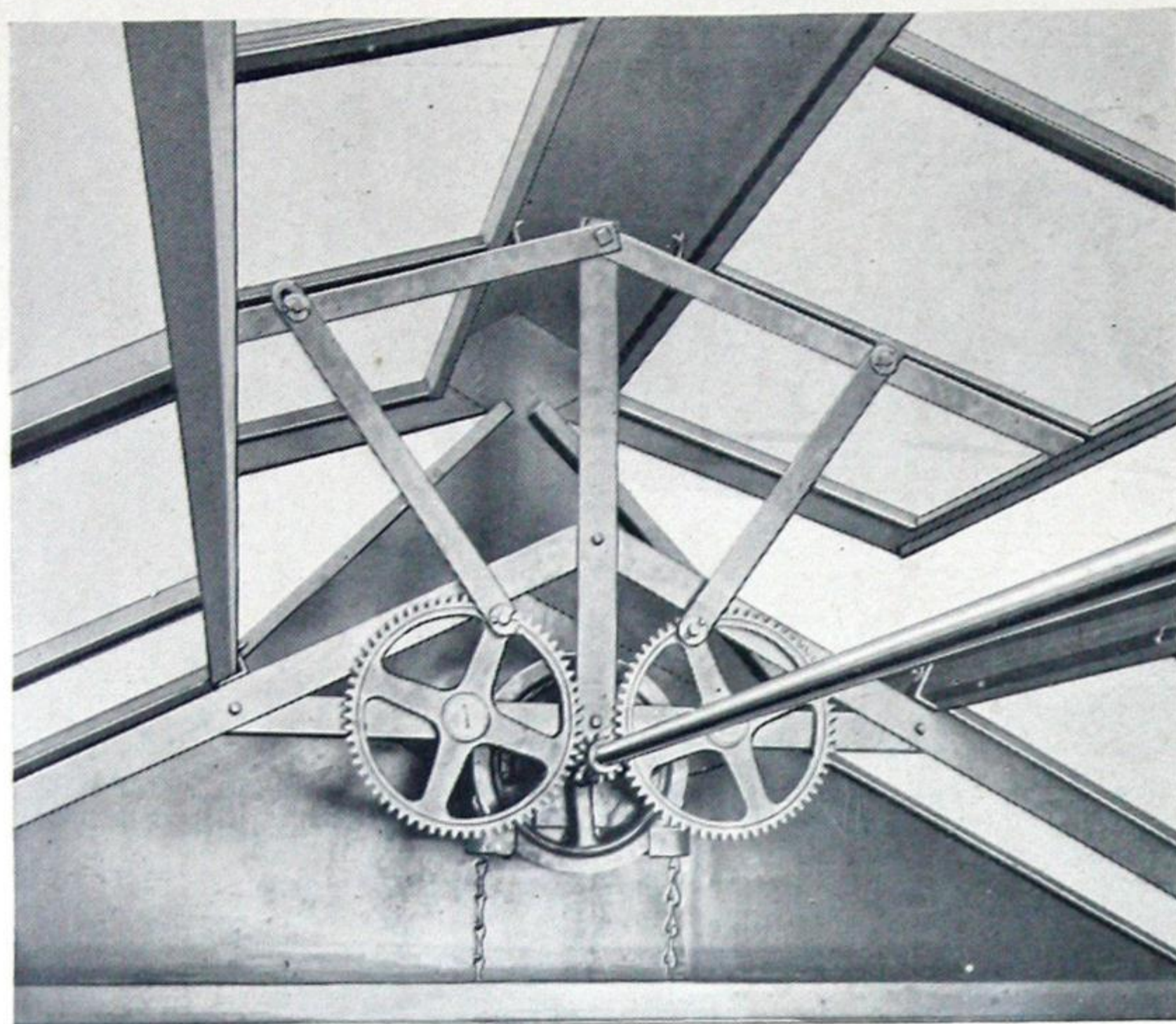
358-368 Webster Avenue  
LONG ISLAND CITY, N. Y.



A. I. A. No. 695.24



# 3-WAY VENTILATION



3-WAY OPERATOR

*We offer this as the most advanced while fully daylighting, it provides the ventilation required in public garages, lawns, etc. At the ridge, a section, or both sides can be opened. And as it cuts off stacks, flues or vents, which cut off the draft.*

## Full Vent or Ridge Vent

Where the greatest amount of rapid air change is needed, the entire skylight, hinged at the ridge, can be raised from the curb to nearly horizontal position. This provides a weather protected opening of about two-thirds of the curb to curb opening.

Where this maximum of ventilation is not needed we recommend the type which has a section hinged at the ridge, but extending only one foot down. This section can be opened on either or both sides. Each type is superior for its designed purpose.

## Full Daylight

As the entire skylight—both the fixed and the movable sections—are glazed, they provide a full measure of daylight. No metal stacks or ventilators cut off the glass area. Thus daylighting efficiency is not impaired.

The glazing bars are so formed that they provide a deep seat for the wire glass as well as adequate condensation gutters.

These sash bars are made up into complete frames ready for glazing.

## Perfect Ventilation

The movable sections of this skylight are hinged at the ridge and either or both sides can be raised. Thus a perfect control of the ventilation is assured under variable weather conditions.

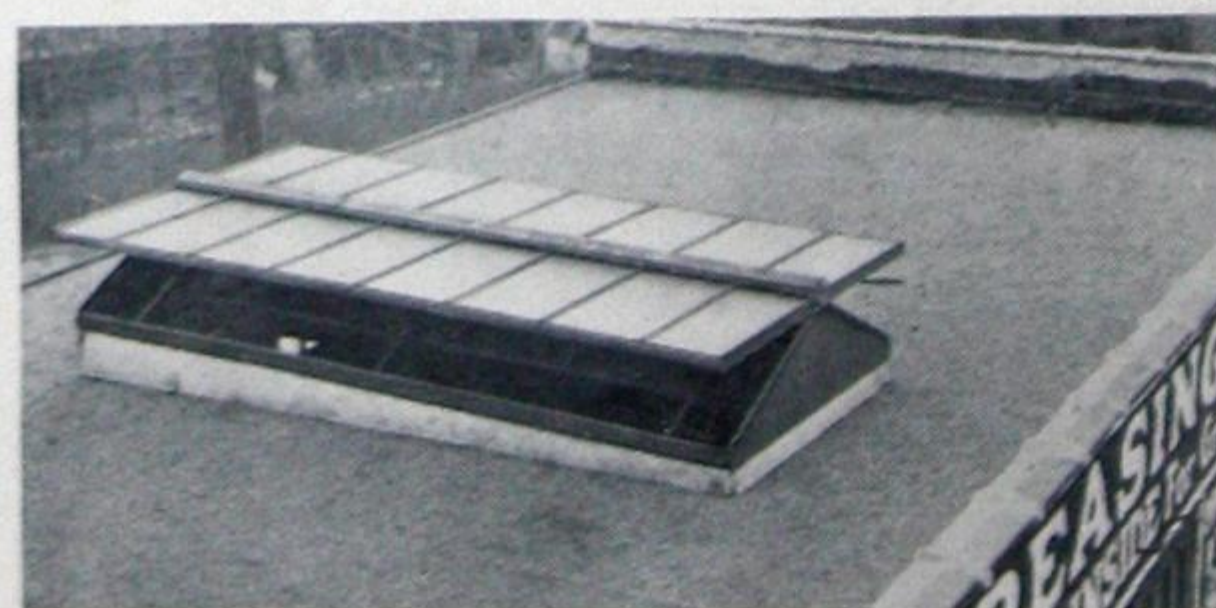
For a full natural outswEEP of air the movable sections on both sides are raised full, with a door or window open below. For a circulation effect the side toward the wind is raised slightly and the other side full; or one section is opened to the wind and an alternate section is opened away from the wind. To secure a siphon action, sections away from the wind are raised.

As any section can be raised to any distance, up to nearly horizontal, they always provide perfect protection under all weather conditions.

GLASS AREA	
SPAN FT.	GLASS AREA
6'	8
8'	10
10'	12
12'	15
T	
SPAN FT.	GLASS AREA
6'	6
8'	8
10'	11
12'	13

## 100% Daylight

PERFECTLY CONTROLLED VENTILATION





# VENTILATING SKYLIGHTS

pe of skylight construction because, that great measure of ventilation ries, etc. This is secured by hinge-entire skylight, so that one or both skylight itself is the ventilator no f daylight, are needed.

## 18-Gauge Metal

In addition to the ventilating feature, 3-WAY VENTILATING SKYLIGHTS are far superior in that they are made of 18 gauge sheet steel or Armco Iron, electro galvanized. This makes a bar of much longer life than the lighter weights. Further, these sheet metal glazing bars, made up into a solid sash, are carried on an angle steel frame. This eliminates all chance for deflection, with its consequent glass breakage. It is the most rigid type of sheet metal construction.

## Simple Operation

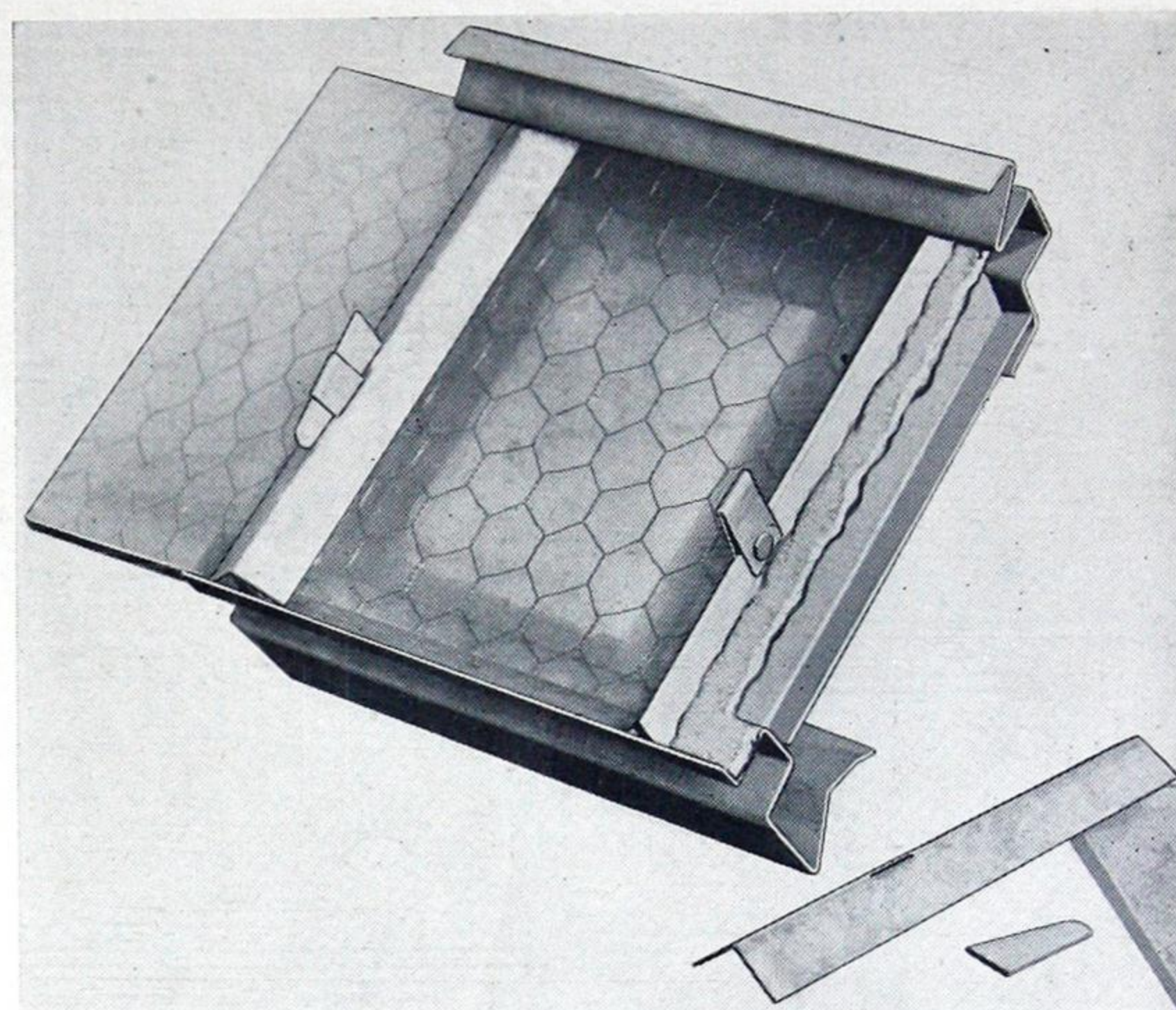
Anyone can operate the 3-Way Ventilating Skylight very easily. On the ridge-vent type a single shaft, operated by a chainwheel and gears with an endless chain, will open sections as long as twenty feet. So perfectly is this geared that the pull is easy enough for a child. Pulling one way opens one side and then the other. Either side can be opened independently or both sides together.

For the Full Ventilating type an operator is provided on each side because of the added weight of the section to be raised.

### MOTOR DRIVEN

The ridge vent type can be fitted with electric motor drive if desired. No limit switch required.

TYPE "F"	
EA	VENT AREA
	5'
	5'
	5'
	5'
"J"	
EA	VENT AREA
	4'
	5' -4"
	6' -8"
	8'



DETAIL OF CONSTRUCTION

## Easy Erection

Any man can erect a 3-Way Ventilating Skylight in a very short time.

The skylights are shipped ready for erection. All sections are made up into complete sashes, at the factory. On the job the angle iron frame is bolted in position on the curb. Over and on this are bolted the fixed sheet-metal sections and the movable sections are pivoted at the ridge. The glass is set in a putty bed.

Glazing bar caps are fastened in place with wedges and the ridge flashing is slipped into place and the job is done.

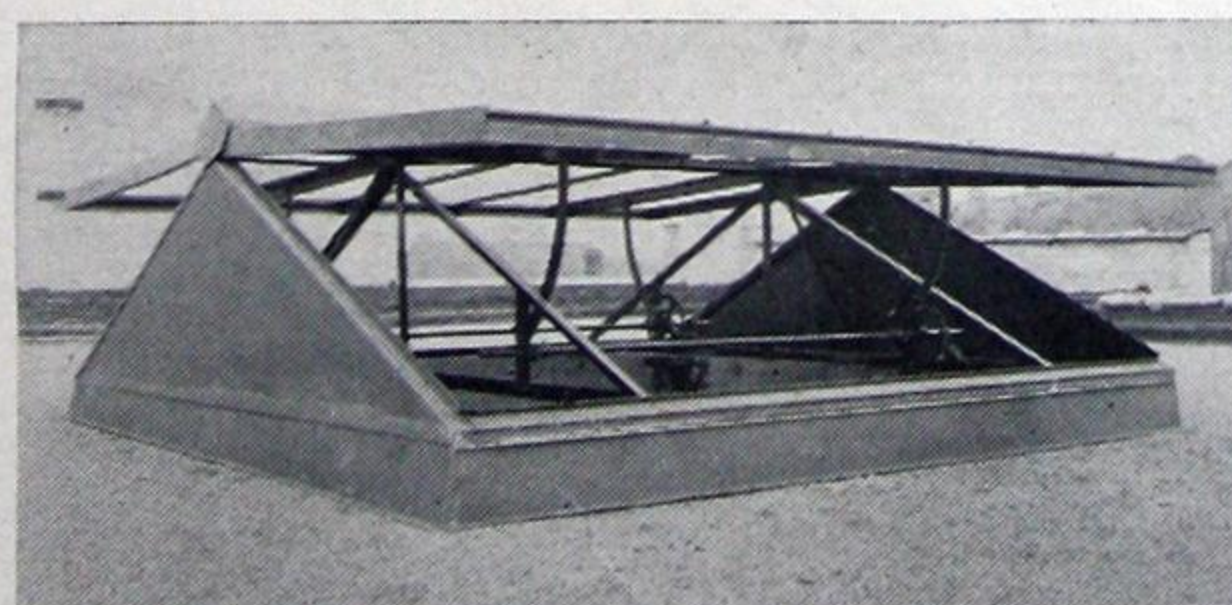
All sheet metal parts, although electro galvanized, and all steel parts, are given a shop coat of red mineral paint at the factory.

Manufactured only by the

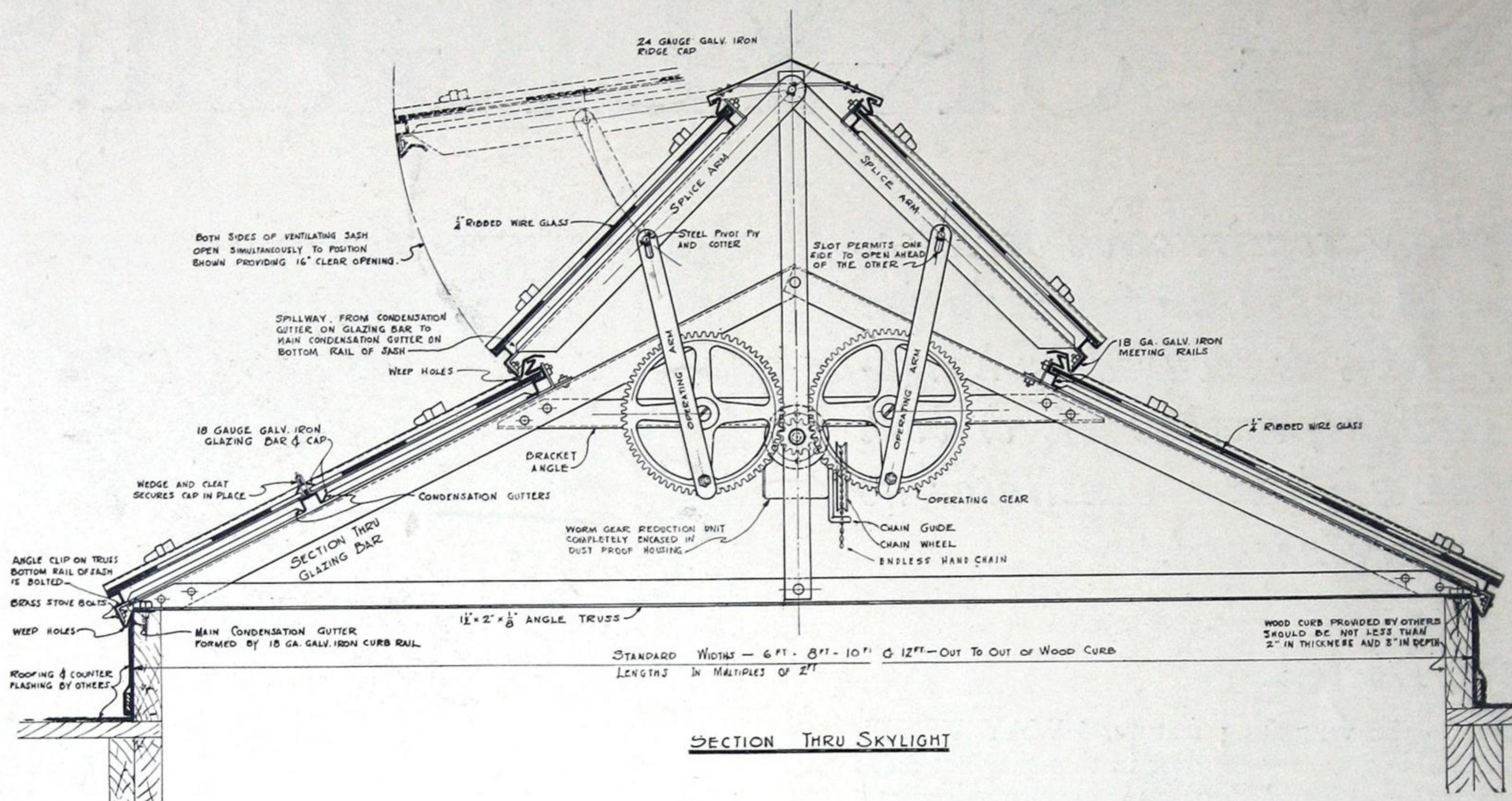
**AMERICAN 3 WAY-LUXFER PRISM COMPANY**  
SKYLIGHT ENGINEERS

1303-1311 South 55th Court  
CICERO, ILLINOIS

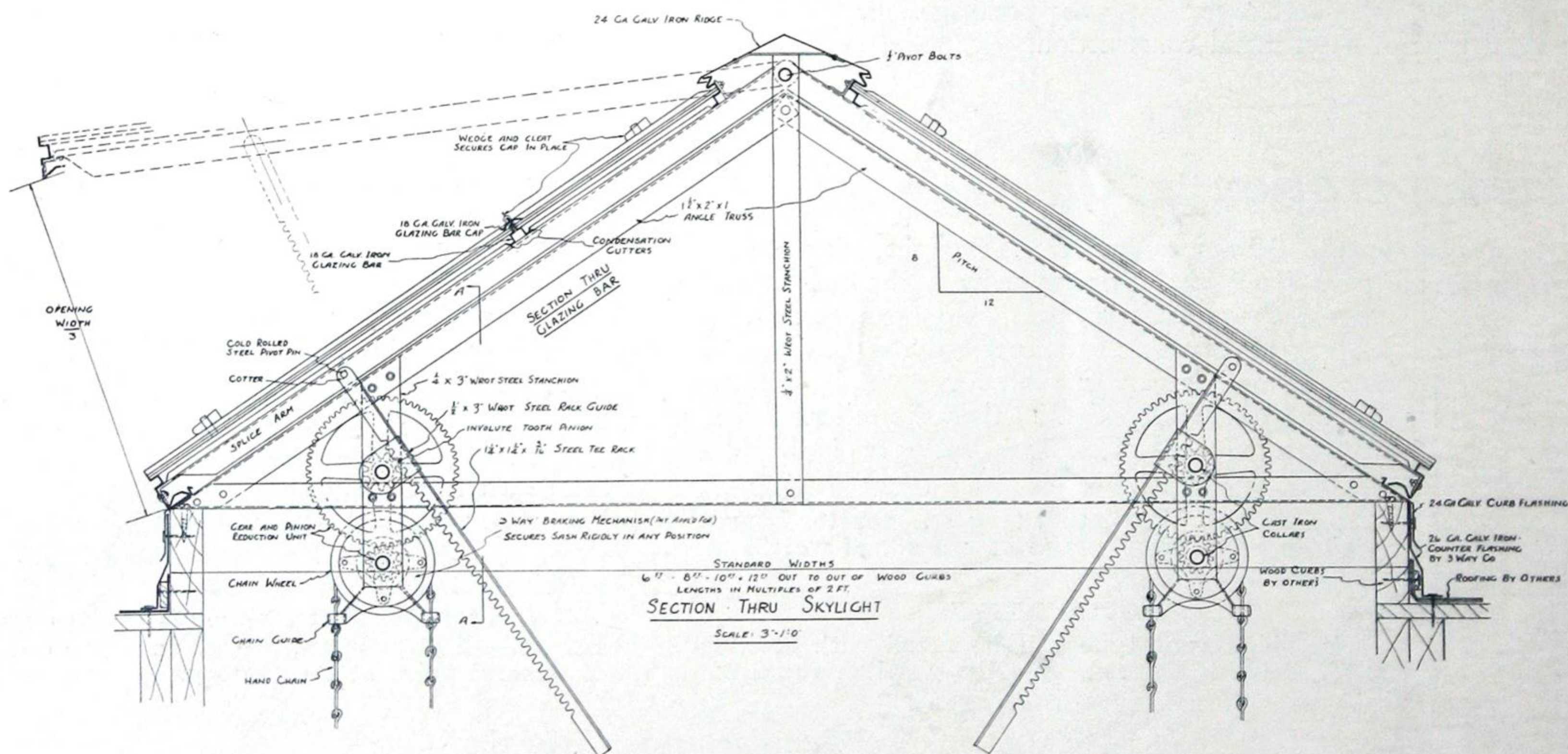
358-368 Webster Avenue  
LONG ISLAND CITY, N. Y.







TYPE F—RIDGE VENT



TYPE J—FULL VENT

## SPECIFICATIONS FOR 3-WAY VENTILATING SKYLIGHTS

All skylights shown on plans shall be of the 3-Way Ventilating Type as manufactured by the American 3 Way-Luxfer Prism Company.

\*These skylights to be of the Ridge Ventilating type; composed of a fixed section and a movable section, at the ridge, for ventilation, equipped with the 3-Way operating device. All glass bearing members to be of 18-gauge galvanized

steel so formed as to provide ample condensation gutters. Glazing to be 1/4-inch wired glass set in putty bed, with 18-gauge galvanized steel caps over the glazing bars. All metal parts to be given one shop coat of red mineral paint.

\*Alternate specifications when full ventilation is wanted. These skylights to be of the full ventilating type, hinged at the ridge with complete movable sash lifting from the curb, equipped with 3-Way operating devices.