

AMERICAN *Skylights*

LIGHT-UP . . . The AMERICAN Way!



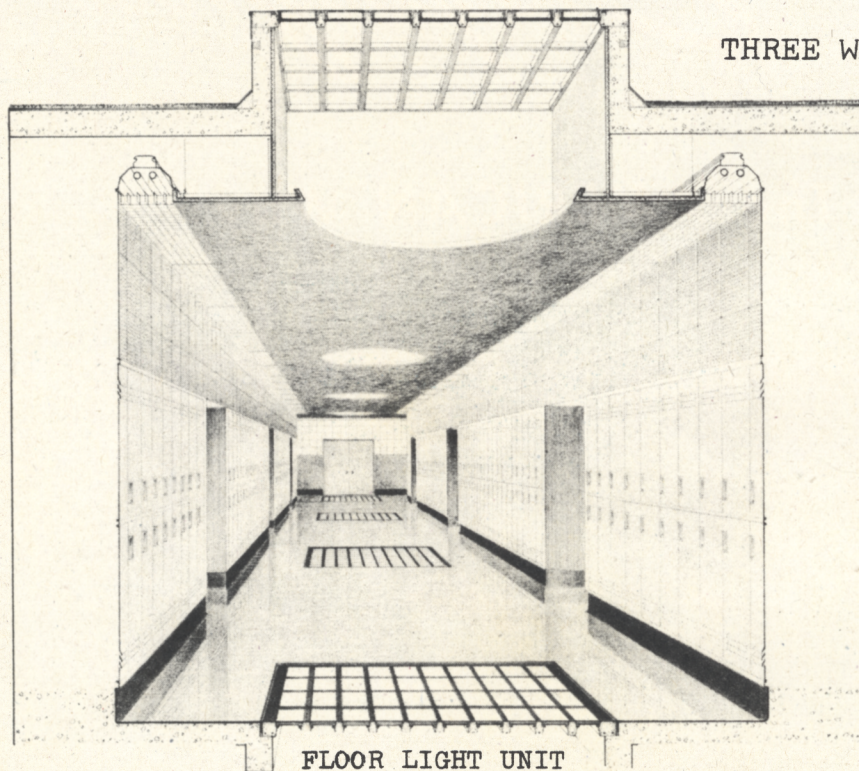
AMERICAN 3 WAY-LUXFER PRISM CO.

431 S. Dearborn Street, Chicago 5, Ill. ★ ★ 26-20 Jackson Avenue, Long Island City 1, N. Y.

AMERICAN

GLASS BLOCK ROOF LIGHTS

SEMI-VACUUM



THREE WAY GLASS BLOCK ROOF LIGHTS

The modern method of daylighting school corridors and other areas. The dead air space in the hollow blocks reduces solar heat transmission and is an insulation against winter temperatures. Ideal for use in air conditioned buildings. The natural light transmitted is softly diffused over wide areas. The use of floor lights below the roof lights is suggested as a means of daylighting the corridor below.

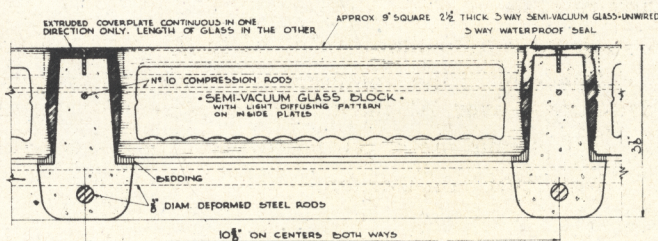
Installation Showing Cross Section Through School Corridor

SPECIFICATION

3-Way Semi-Vacuum Block-Skylights are manufactured by the American 3 Way-Luxfer Prism Co., Chicago, Ill. and New York, N. Y. Blocks are 9 in. square, 2½ in. thick over all and spaced approximately 10⅝ in. on centers. Top and bottom plates shall be not less than ⅓ in. in their least section. Light diffusing lenses shall be incorporated in inner surfaces leaving exposed surfaces smooth.

The reinforced concrete supporting grid shall be designed for minimum live load of 40 lb. per sq. ft. All borders shall be flashed as per manufacturer's details. Flashings are specified under separate contract.

- GOOD INSULATION VALUES
- UNIFORM LIGHT DISTRIBUTION



DATA	3⅞" Thick Construction	4⅝" Thick Construction
Maximum One Way Bearing Span Not over	7'-2"	8'-0 ⅝"
Any Length the Other Way
Maximum Precast Panels	7 units wide by 4 units long or 28 sq. ft. overall panel	
Maximum Monolithic Panels	8 units wide by 12 units long	9 units wide by 12 units long
Minimum Pitch Required	¼" to 12"	¼" to 12"
Concrete Mix—Weight per Square Foot	35 lbs.	42 lbs.
Haydite Concrete—Weight per Square Foot	30 lbs.	35 lbs.
Live Load	40 lbs. plus	40 lbs. plus

AMERICAN 3 WAY-LUXFER PRISM CO.

431 S. Dearborn Street, Chicago 5, Ill. ★ ★ 26-20 Jackson Avenue, Long Island City 1, N. Y.

AMERICAN

AUTOMATIC STAGE VENTILATOR

No. 67-M

American No. 67-M Stage Vents are manufactured by American 3 Way-Luxfer Prism Co. Ventilator opens automatically in case of fire and is adjustable by hand for ordinary purposes.

Sheet metal trim is #24 gauge galvanized steel. (Or 16 oz. cold rolled copper).

The sides of the ventilator have well constructed corners and mullions with openings fitted with metal ventilating doors. The doors are hinged at the bottom with galvanized hinges and swing out, leaving an absolutely unobstructed passage for gasses, smoke and foul air.

Connecting the upper part of each door with head jamb, is a combined jack knife bracket and check arm which acts as a lever in thrusting doors outward and at the same time prevents the doors from opening outward beyond a certain point, also holds doors rigid against wind when open.

Doors are held in the closed position by flexible cables running over pulleys and attached to fusible links at the doors, the other ends of the cables being connected to one or more main control ropes. The main control ropes are carried down to a point where they can be quickly and conveniently released from the floor, using the "3 Way" control panel with lever arm release.

Doors are insulated with $\frac{7}{8}$ " thick celotex and are metal covered.

The roof of the ventilator is hip design of steel rafter bar construction. Roof is covered with a metal deck layed over $\frac{3}{8}$ " thick fireproof board insulation.

All ferrous metal parts are given one shop coat of mineral primer.

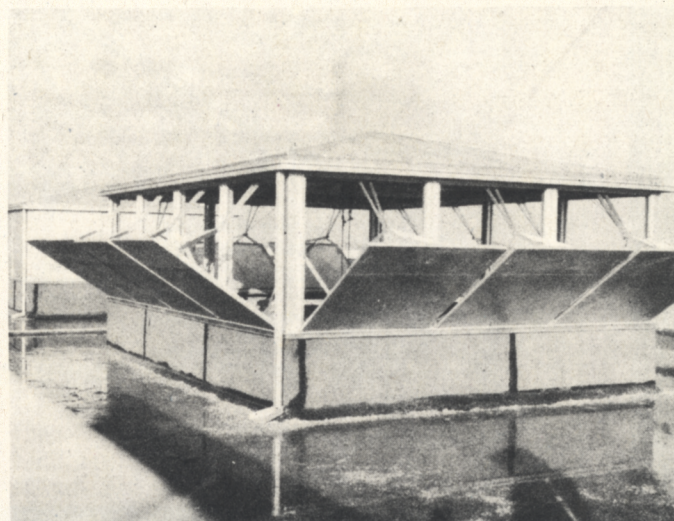
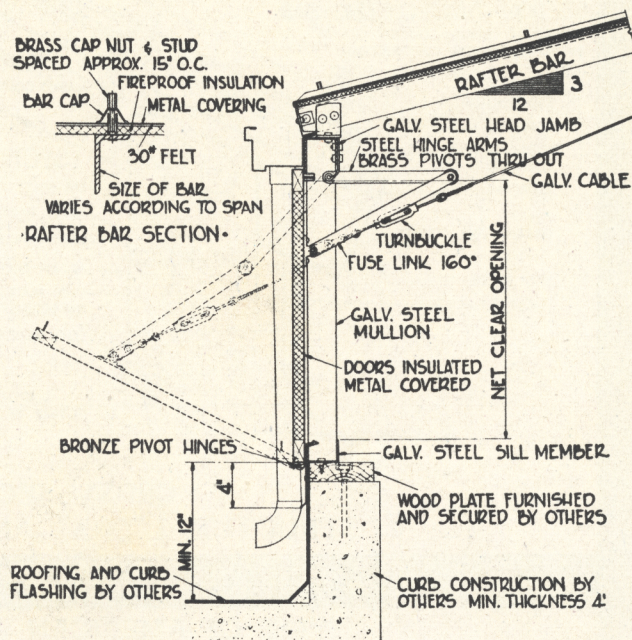
Note curb construction.

AMERICAN STAGE VENTILATOR

Automatic in case of fire. Flames shoot upwards, which prevents spreading of fire and danger of panics. A combined ventilator and weatherproof skylight for use in theatres, moving-picture houses, public, parochial and high schools, auditoriums, temples, etc.

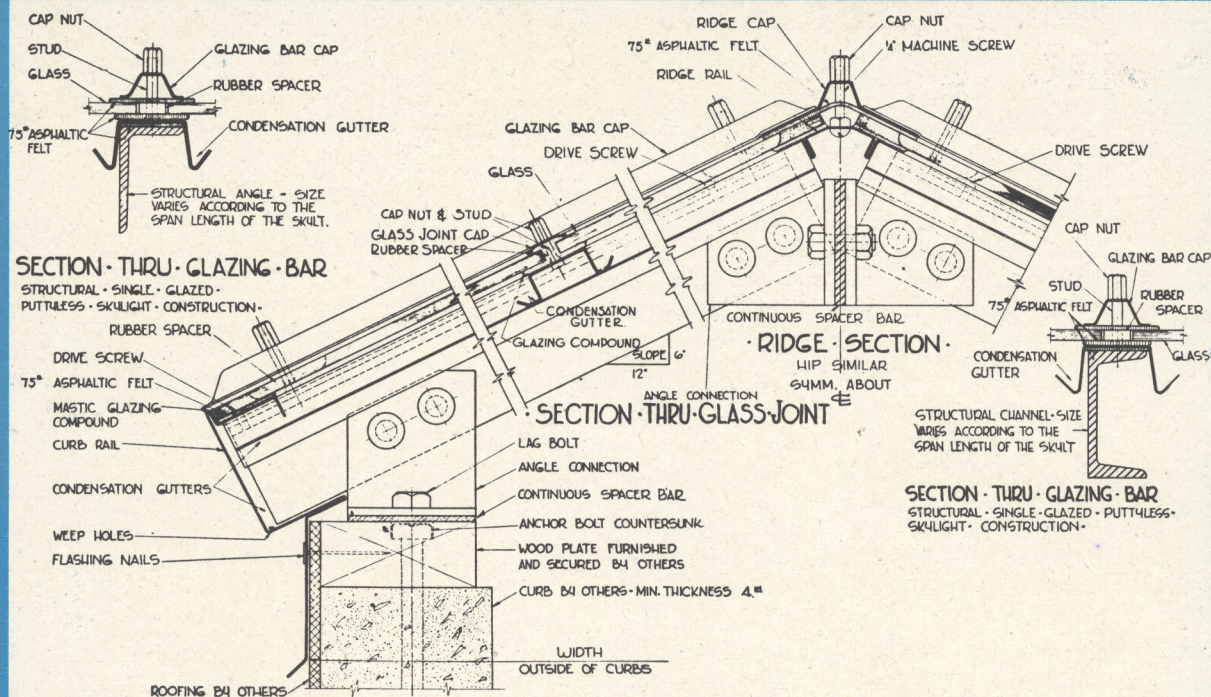
Shutters for opening skylight are hand-operated, but may be slammed wide open instantly by cutting the rope. In case of fire, the fusible links are melted or ropes burn and shutters open automatically.

Scientifically constructed with provisions for day-lighting and ventilation besides its safety features. Weatherproof—impervious to rain, snow, ice or sleet.



AMERICAN 3 WAY-LUXFER PRISM CO.

431 S. Dearborn Street, Chicago 5, Ill. ★ ★ 26-20 Jackson Avenue, Long Island City 1, N. Y.

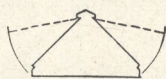


CROSS SECTION THRU STRUCTURAL "SP5" ANGLE TYPE SKYLIGHT

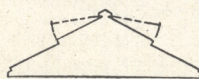
TYPES OF AMERICAN VENTILATING SKYLIGHTS



Type J—A full ventilating type, wherein the sash is hinged at the ridge and opened from the curb, thus providing a maximum vent area. Each side is controlled by a separate operator.



Type JR—A full ventilating type, designed especially for use on widths under 6 ft. Also applicable as a continuous ridge ventilator for saw-tooth construction.



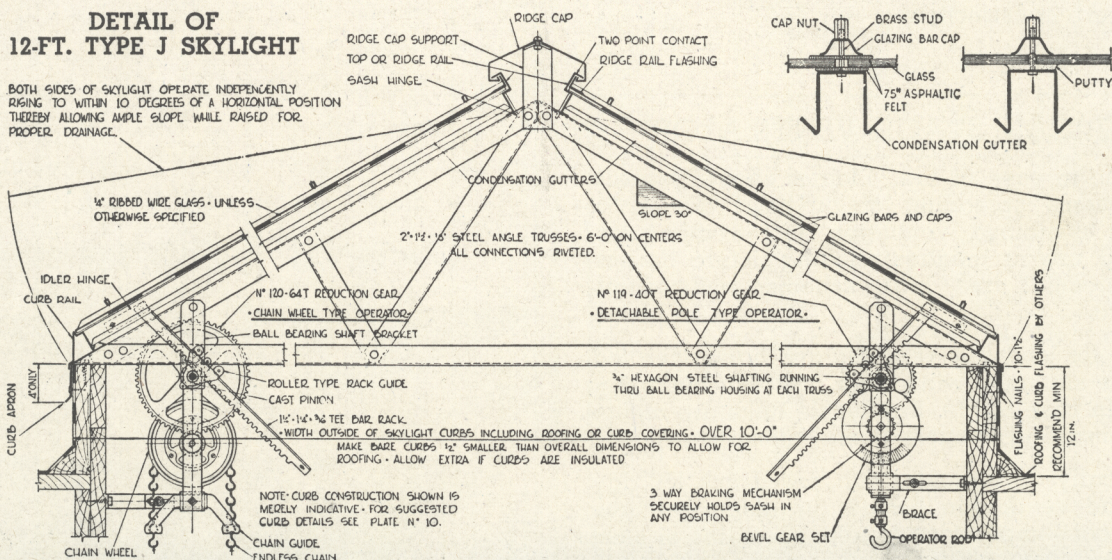
Type JL—A ridge ventilating type designed for spans over 12 ft. The upper or vent sash is in widths corresponding to the standard Type J widths. Thus continuous ridge openings of 8 and 10 ft. may be had.



Type F—A ridge ventilating type, consisting of a pair of constant sized movable sash at the ridge and fixed sash below. Vent sash may be operated independently or simultaneously by means of a single control. Provides maximum weather-tightness with efficient ventilation and day-lighting.

DETAIL OF 12-FT. TYPE J SKYLIGHT

BOTH SIDES OF SKYLIGHT OPERATE INDEPENDENTLY RISING TO WITHIN 10 DEGREES OF A HORIZONTAL POSITION THEREBY ALLOWING AMPLE SLOPE WHILE RAISED FOR PROPER DRAINAGE.



AMERICAN 3 WAY-LUXFER PRISM CO.

431 S. Dearborn Street, Chicago 5, Ill. ★ ★ 26-20 Jackson Avenue, Long Island City 1, N. Y.