

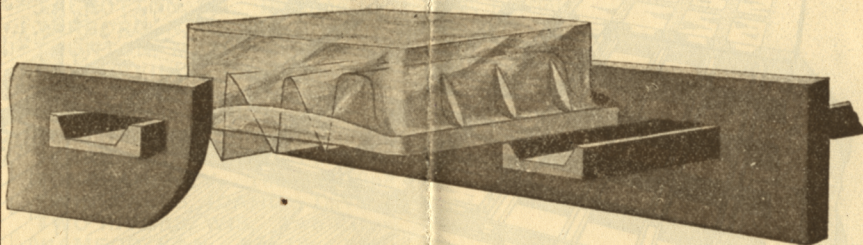
**MAXIMUM STRENGTH
ILLUMINATION AND DURABILITY**

ARE ONLY OBTAINED BY USING THE NEW

PORCELITE "BAR-LOCK"

WROUGHT STEEL CONSTRUCTION AND

"3"-POINT PRISMS



ABOUT HALF ACTUAL SIZE

Absolutely better and cheaper than any other construction
now known for Pavements, Basement Illumination,
Court Areas, Balconies, Porches, etc.



MANUFACTURED ONLY BY THE

AMERICAN BAR-LOCK COMPANY

Offices and Works

Twenty-Sixth and Pennsylvania Avenue

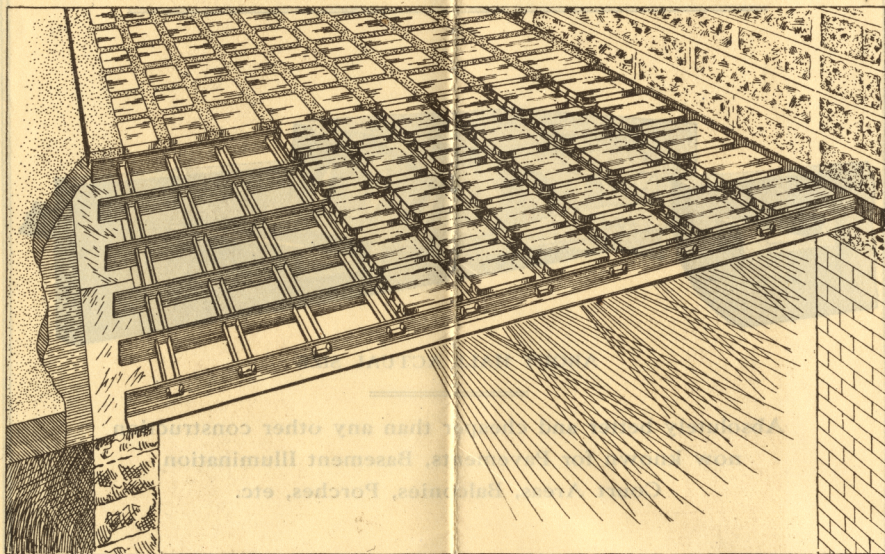
PHILADELPHIA

CAUTION—Any person using or selling any infringements of the Company's
patents will be promptly prosecuted.

The Modern Pavement and Floor Light

The interlocking of extra heavy wrought steel bars set on edge, with **Channel Bars** run through them at right angles, forming a network of meshes to receive the glass, comprises, with the new Porcelite finish, the now well-known and approved "**Bar Lock**" vault and floor-light construction which supersedes every other, and enables a guarantee to be offered for Greater strength, Greater glass surface, Greater diffusion of light, and Immunity from corrosion and leakages.

The function of the **Channel Bars** is to provide a deeper rib of cement between the glasses, and afford the effectual binding of the cement around and under the flanges of each glass, thereby insuring a water-tight joint and additional strength. This is a great improvement over the old-style flat cross bars.



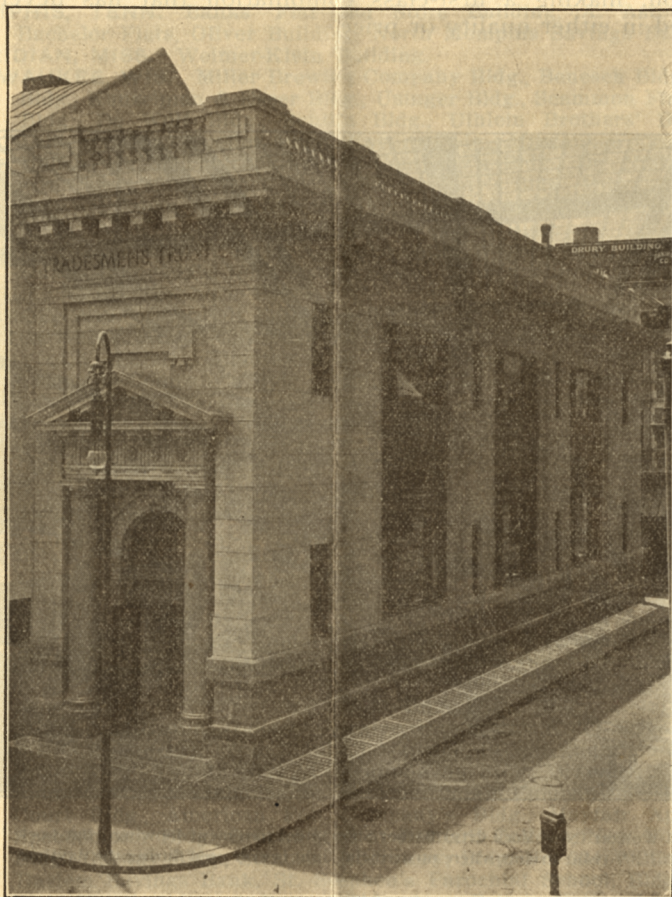
View showing "**Bar-Lock**" Construction, "**3**"-Point Prisms and a portion cemented complete, finishing flush with pavement

Words cannot adequately describe the many special advantages of our patented "**3**"-Point Prisms. A few points of important distinction, however, are the following:

Each lens contains three separate and distinct prisms of different sizes and angles, so constructed as to diffuse the light in three directions.

The prism points are so arranged that no light is lost by the rays being projected against each other, which is the case in all other prisms.

A careful inspection of the illustrations contained herein will convince the most skeptical that the new **"Porcelite Bar-Lock"** Wrought Steel Construction with **"3"-Point Prisms** has a most decided advantage over all other forms of Basement Illumination, not only in regard to simplicity and strength of construction, largest glass area and over **100 per cent.** more light obtained, but also the ease with which it can be laid.



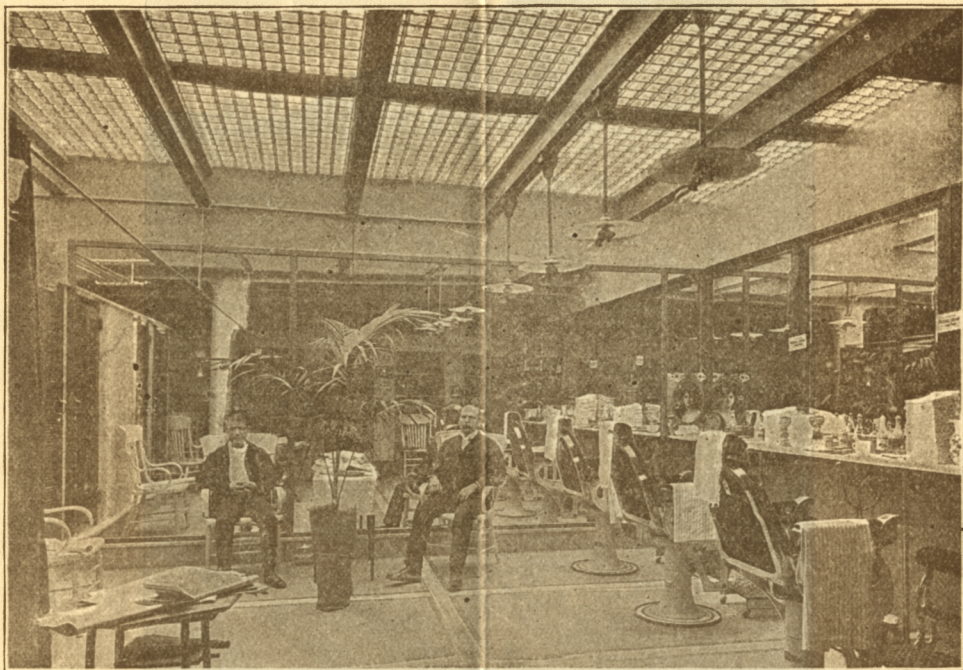
Tradesmen's Trust Co., Philadelphia. "Bar-Lock" Wrought Steel Pavement and Floor Light Construction with Patent "3"-Point Prisms and "Arch Plain" Lights were used.

One of the best features of **"3"-Point Prisms** is the minimum amount of glass (consistent with strength) that light has to pass through in order to be refracted into a basement.

In every instance where **Porcelite "Bar-Lock"** and **"3"-Point Prisms** have been shown to Engineers, Architects and Builders, they have been immediately endorsed and approved, on account of superiority and extremely low cost.

The new Porcelite "Bar-Lock" frames are conceded to be far superior to the old form of galvanizing as each enameled coat is baked on, and not only will last forever, but diffuse more light and presents the best appearance underneath of any vault light construction ever placed on the market.

Patented "Arch Plain" glass will permit of the passage of more direct light underneath, than the heavy plain glass now in general use, as they are so formed as to allow of advantageous annealing, thereby gaining clearer glass and greater strength. "Arch Plain" lights are designed especially for "Bar-Lock" wrought steel construction, making a first-class combination that has never been equalled in either quality or price.



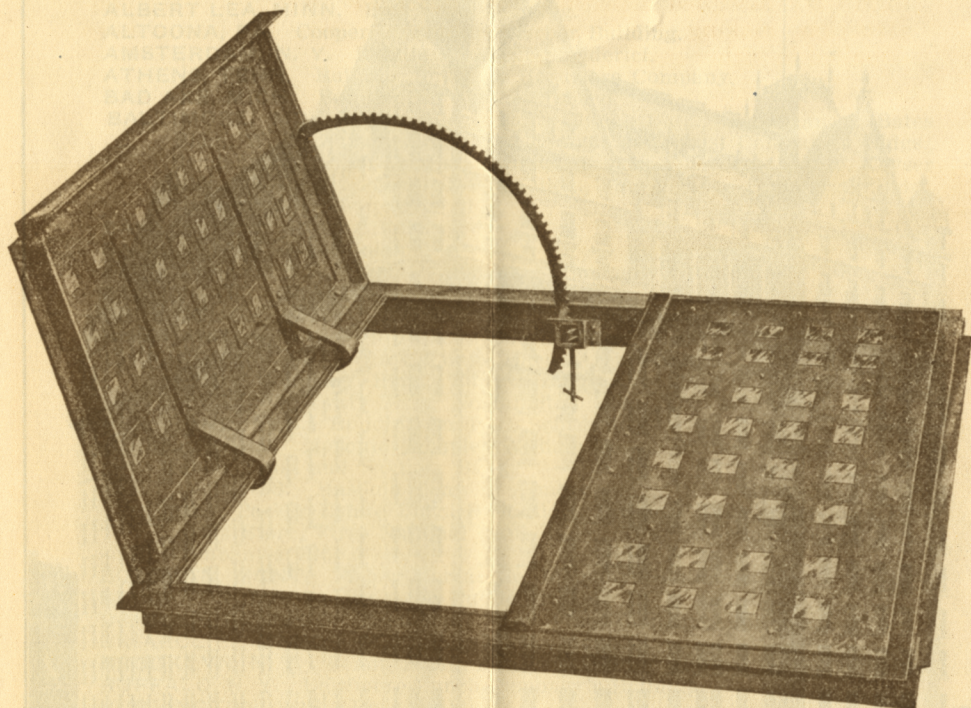
Hotel Wolcott (New York City) Barber Shop under pavement showing "Bar-Lock" with "3"-Point Prisms where no artificial light is ever used during the daytime.

Porcelite "Bar-Lock" wrought steel construction can be used for curved work, such as Domes, Awnings, Roofs, etc. As there is no exposed iron work on top when finished, there are no joints to leak or parts to rust or become slippery. The cement finishes flush with building or pavement, and the construction presents the most beautiful appearance both on top and underneath.

Dark cellars can be transformed into rentable and profitable places.

Porcelite "Bar-Lock" frames are shipped in suitable sections and can easily be set by any competent cement man. No experience required.

New "Bar-Lock" Steel Plate Doors



"Bar-Lock" Steel Plate Vault Light Door, watertight and practically flush with pavement.
Concealed Hinges.

A recent perfected utility and a much needed improvement is our New "Bar-Lock" Steel Plate Door, made with glass, or diamond top, rivet head top or plain steel plate. Our new strong hinges are concealed, and the doors are absolutely watertight and practically flush with the pavement. These doors are the lightest, strongest and most durable as well as the neatest in appearance ever placed on the market. They can be easily operated without worm gear opening device, in sizes up to and including 5 feet x 5 feet. Detailed blueprints of same will be mailed on request. We also make illuminated rectangular coal hole covers in two sizes, 20 inches x 22 inches, and 24 inches x 27 inches.

New "Bar-Lock" Steel Plate Doors

THE PLAZA HOTEL, NEW YORK CITY



Porcelite "Bar-Lock" Wrought Steel Construction with "3"-Point Prisms was used for lighting this Building.

PARTIAL LIST OF BUILDINGS

Where "Bar-Lock" with "3-Point Prisms" or
"Arch Plain Lights" have been recently installed

- ADRIAN, MICH. Building for A. P. Crane.
ATLANTA, GA. Atlanta Terminal Station, City of Atlanta Washington Street Viaduct.
ALLETOWN, PA. Koch Brothers' Store Building.
ALBERT LEA, MINN. Enterprise Building.
ALTOONA, PA. Cooper Building, Debarber Building.
AMSTERDAM, N. Y. Building for J. D. Friderici.
ATHENS, TENN. Building for Reed Hardware Company.
BAD AXE, MICH. Building for F. W. Hubbard.
BALTIMORE, MD. Sexton Bldg., Jane Clunet Bldg., Hennegan & Bates Bldg., W. T. Wilson Bldg., Safe Deposit and Trust Company's Bldgs., Bendann Bldg., Gaither Estate Bldgs., Stokes Apartment House, Keyser Bldg., National Mechanics' Bank Bldg., Singer Bldg., Hamburger Bldg., Darby Candy Company's Bldg.
BANGOR, ME. Stearns Building.
BANGOR, PA. Hotel Colonial.
BATON ROUGE, LA. Doherty Hardware Company's Building.
BEAUMONT, TEXAS. Pearlstein Building.
BELLINGHAM, WASH. McLeod Building, Dahlquist Building.
BINGHAMTON, N. Y. Hull Grummond Building, Y. M. C. A. Building.
BIRMINGHAM, ALA. Brown-Marx Bldg., Architect Scott Joy's Residence, Realty Company Bldg., Turner Bldg., City Paper Company Bldg., Fowlkes & Myatt Bldg., Northington Bldg., Caldwell Bldg.
BERTRAND, NEB. Building for P. C. Schrewder.
BOISE, IDAHO. Masonic Temple, William Jones Block, Alexander Bldg., Idaho Trust and Savings Bank.
BOSTON, MASS. Masonic Temple, Armory Bldg., Old Colony Trust Company, Parker Estate Bldg., Root Bldg., Jewelers' Bldg., Houston's Dry-goods Store, First National Bank Bldg., New England Bolt and Steel Company's Bldg.
BOZEMAN, MONT. Fisher Mercantile Company's Building.
BROCKTON, MASS. Brockton Public Market.
BRIDGEPORT, OHIO. Bridgeport Bank Trust Company Building.
BRIARCLIFF MANOR, N. Y. Mrs. Dow's School.
BROOKLYN, N. Y. Pennsylvania Railroad Atlantic Station, Hanan Building.
BUFFALO, N. Y. Baltimore Lunch Company's Building.
BURLINGTON, WIS. Rose Building.
CANTON, OHIO. The Troy Laundry Company.
CARTHAGE, MO. Hannun Building.
CATSKILL, N. Y. Bove Cafe.
CHAMBERSBURG, PA. Foust Office Building.
CHARITON, IOWA. Smyth Building.
CHATTANOOGA, TENN. Fisher Brothers' Bldg., Loveman Bldg., James Bldg., Patton Hotel.
CHICAGO, ILL. Co-operative Store Bldg., Bacigalupo Bldg., Winston Company's Bldg., St. Boniface Cemetery Bldg., Schroeder Bldg., Smale Bldg., New York Life Bldg., Fairbanks & Mower Bldg., City Engine Houses, Olszewski Bldg., Wacker Bldg., The Millinery World Bldg., Eye and Ear Infirmary, First National Bank Bldg., O'Leary Bldg., L. Klein Bldg., Lincoln Park Field House.
CINCINNATI, OHIO. German National Bank Bldg., Enquirer Bldg., White Star Laundry Bldg.
CLEARFIELD, PA. Clearfield National Bank.
CLEVELAND, OHIO. Guardian Trust Company.
CHEYENNE, WYO. Building for Thomas Heaney.
CHICKASHA, I. T. Building for George B. Petty.
COLUMBIA, MO. Exchange National Bank.
COLUMBUS, GA. Affleck Hotel, Garrard Bldg., R. W. Needham Bldg., R. L. Ross Bicycle Shop.
COOKEVILLE, TENN. Sloan Store Building.
COON RAPIDS, IOWA. Henry Store Building.
COUNCIL BLUFFS, IOWA. John Beno Store Building.
COLERAINE, MINN. Building for Ranquist & Johnson.
COHOES, N. Y. Manufacturers' Bank.

CONEMAUGH, PA. Building for W. F. Frishkorn.
DANVILLE, ILL. Bridget Building.
DETROIT, MICH. Gray & Worcester Store, John Streeter Company Store, A. M. Henry Building.
DENVER, COL. Union Deposit and Trust Company, Kittredge Bldg., Denver Drygoods Company's Bldg., Denver Post Bldg.
DANBURY, CONN. Hull Building.
DALLAS, TEXAS. Linz Building.
DUBOIS, PA. Webster Building.
EAST LIVERPOOL, OHIO. Washbutsky Block, Golding Building.
EAST ORANGE, N. J. Moore Building.
EASTON, PA. Jacob Mayer Building.
ELIZABETH, N. J. Singer Bldg., Lehman Building, McGhee Bldg., Russ Bldg., Noor Bldg., Higgins Bldg.
ELKINS, W. VA. Jenkins & Harr Hotel.
ELYRIA, OHIO. Building for Brown Brothers.
EVERETT, WASH. First National Bank.
EVANSTON, ILL. Wightman Building, Ulrich Building.
EVANSVILLE, IND. St. Anthony's School House, Heyns Building, Vendome Hotel.
FLORENCE, S. C. Atlantic Coast Line Station.
FOGELSVILLE, PA. Lehigh Portland Cement Company's Mill.
FORTRESS MONROE, VA. Hotel Chamberlain Swimming Pool.
FORT WORTH, TEXAS. J. D. Trommell Bldg., Winfield Scott Hotel, E. C. Hoadley's Residence, Shelton Bldg., Sloan Block, Ellison Bldg.
FOSTORIA, OHIO. Cadwallader Building, Eureka Planing Mill and Lumber Company.
FREDERICK, MD. Rosenstock Brothers' Department Store.
FREMONT, MICH. Pierson & Co.'s Building.
GOLDSBORO, N. C. Union Passenger Station.
GREELY, COL. Buckingham Building.
GLENS FALLS, N. Y. Moynahan Store Building.
GREENSBORO, N. C. Glenn Building.
HARRISBURG, ILL. Saline Trust and Savings Bank, Building for J. B. Ford Lumber Company.
HAMILTON, OHIO. Odd Fellows' Temple.
HARRISBURG, PA. Pennsylvania State Capitol Building, Stamm Building, Rotherth Building, Commonwealth Trust Company's Building.
HARRISONBURG, VA. First National Bank, Avis Store.
HARTFORD, CONN. Travelers' Insurance Company's Building.
HAVERHILL, MASS. Boston and Maine Railroad Station.
HOOPESTOWN, ILL. McFerren Building.
HOUSTON, TEXAS. Levy Brothers' Building, Wadell Building, Dickson Building.
HUNTINGDON, W. VA. Biggs Building.
INDIANA, PA. Indiana Lumber Supply Company Building.
INDIANAPOLIS, IND. Indianapolis News Bldg., Methodist Hospital, English Hotel, Lesh Paper Company's Bldg., Central Union Telephone Bldg., John Herron Art Institute, Board of Trade Bldg., Burford Bldg.
INDIANOLA, MISS. Sunflower Bank.
ITHACA, N. Y. Herbert Wilson Block, Wanzer Howell Block.
JACKSON, MISS. Pythian Castle Hall.
JACKSON, TENN. Jackson Woolen Mills.
JACKSONVILLE, FLA. Stockton & Budd Building, Buckman Office Building.
JERSEY CITY, N. J. Heilbrun Building, Corrigan Building.
JOPLIN, MO. Miners' Bank Building, Spring Building.
JOHNSTOWN, PA. National Title Trust Company Building.
KALAMAZOO, MICH. Kalamazoo National Bank.
KANSAS CITY, MO. Neudeck Building.
KITTANNING, PA. Thompson Office Building.
KENWOOD, CAL. Residence Hon. Thomas Hearn.
KNOXVILLE, TENN. Colonial Hotel, Bldg. for David Getatz Son Company.
LA CROSSE, WIS. Barron Block.
LANCASTER, PA. Manhattan Laundry Bldg., Bausman Bldg., Snyder Bldg., Watt & Shand Bldg., Bucher Bldg., Wesenberger Bldg.
LA PORTE, IND. Barnes Building.
LEBANON, N. H. High School Building.
LEBANON, PA. First National Bank.
LEWISTON, PA. St. Charles Hotel.
LEXINGTON, KY. Vivian Station.
LINCOLN, ILL. Collins Building.

LINCOLN, NEB. Central Building and Loan Company's Building, Burlington Block.

LOCKPORT, N. Y. Farmers and Mechanics' National Bank.

LOUISVILLE, KY. Kentucky Title and Savings Company Building, Louisville and Nashville Railroad Station, Louisville Public Library, Lincoln Savings Bank, Belknap Warehouse.

LOS ANGELES, CAL. Farmers and Merchants' Bank.

LYNN, MASS. Foster Building.

MANKATO, MINN. Building for J. B. Nelson Company.

MARYSVILLE, TENN. Court House.

MARION, VA. Marion National Bank.

MARISSA, ILL. Hamilton Building.

MECHANICSVILLE, N. Y. Mead Building.

MEMPHIS, TENN. Banks' Flat and Store Building, A. Aste Building, Bachelor Flats, Oliver Building, North Memphis Savings Bank.

MERIDIAN, MISS. Weimer-Klein Building.

MILWAUKEE, WIS. Miller Brewing Company Bldg., Benesch Bldg., Schunk Bldg., Kunzelman & Esser Bldg., Usinger Bldg., Scammon Flats, Kuehn Bldg., De Wolf Bldg., Schlitz Bldg., Uihlein Brothers' Bldg., Aug. Uihlein Bldg., Mueller Bldg., Kettler Bldg., Milwaukee County Court House, Knauber Lithographing Company's Bldg., Dr. Nichols' Bldg., Fire Patrol House, Bach Drygoods Company's Bldg., Milwaukee Journal Bldg., Hoffman Bldg., Atlantic Investment Company's Bldg., the Lyon Store, the Hungarian Brewery, C. Mansfield Bldg.

MINNEAPOLIS, MINN. First National Bank, Warner Bldg., William Donaldson Company's Department Store, Minneapolis Club Bldg.

MOBILE, ALA. Cawthorn Hotel.

MONROE, WIS. Churchill Building.

MONTGOMERY, ALA. Gay Teague Hotel, Tyson Building.

NASHVILLE, TENN. Timothy Bldg., First National Bank, Castner Knott Drygoods Company's Bldg., Stahlman Bldg., T. S. Weaver Bldg.

NAUVOO, ILL. St. Mary's Academy.

NEWARK, N. J. Pennsylvania Railroad Station.

NEW BEDFORD, MASS. New Bedford Textile School.

NEW GLARUS, WIS. Levitan Steucy Company's Building.

NEW HAVEN, CONN. C. E. Thompson & Son's Building, Connecticut Savings Bank.

NEW LONDON, CONN. Union Bank.

NEW ORLEANS, LA. Building for Toledano & Wogan.

NEW YORK CITY, N. Y. Plaza Hotel, University Club House, Public Schools Nos. 51, 104, 148 and 150; Service Plant, Terminal P., N. Y. and L. I. R. R.; American Banking Note Bldg., Duveen Bldg., Ricca Piano Factory, Hotel Walcott, Commercial Cable Annex Bldg., Sixtieth Street Public Baths, Shayne Bldg., Belmont Office Bldg., Lamb Bldg., Surprise Department Store Bldg., Kerwin Bldg., Oelschlagers Brothers' Bldg., Title Guarantee and Trust Company's Bldg., Heilbron Bldg., Hotel Renaissance, Liberty Theatre, Hawthorne Hotel, Spencer Apartments, Engineers' Club, Phipps Residence, Brogan Bldg., Safford Bldg., Zobel Bldg., Toplitz Bldg., Browning-King Bldg., Braender's Bldg., Edmund Coffin's Warehouse, Acme Construction Company's Bldg., Chapel Court Bldg., American Felt Company's Bldg., Mayfair Apartments, Speedometer Bldg., Brooks Hall at Barnard College, New York Edison Bldg., Galway Bldg., Strauss Laboratory, Bldg. No. 224 William Street, Harlem Savings Bank, St. Stephen's Parochial School, Bldg. at 27-37 West Thirtieth Street, Brogan Bldg., New Britain National Bank Bldg., American Brass and Copper Company's Bldg., Little Printing House, Public School No. 150, Bldg. at 134-136 East Fourteenth street, American Bank Note Company Bldg., Fruit Auction Company Bldg., Hugh Getty Bldg., Van Schaick Bldg., Bldg. 67 West Twenty-third street, Orently Bldg., Public Library No. 32, New York Edison Station, Bldg. at 33 West Seventeenth street, Bldg. corner Broadway and Seventy-fourth street, Bldg. 92 West Twentieth street, Twelfth Regiment Armory, Michael Benincasa Bldg., Bldg. 30-32 West Fifteenth street, U. S. Post Office, Brooklyn, N. Y.; Hudson Bldg., New York Law School, Bldg. northwest corner Forty-second street and Sixth avenue.

NORFOLK, NEB. Citizens' National Bank.

NORTH VERNON, IND. North Vernon Pump and Lumber Company's Bldg.

OAKLAND, CAL. Realty Syndicate Building, Polytechnic Business College, Dr. J. K. McLean Building.

OGDEN, UTAH. Wedell Building.

OKLAHOMA CITY, OKLA. Bath House.

OMAHA, NEB. Wright & Wilhelmy Bldg., Webster-Sunderland Bldg.,
 Schmoller & Mueller Bldg., American Radiator Company's Bldg.,
 Duferene Bldg., Schlitz Hotel.
ONEONTA, N. Y. Wilbert National Bank.
ORANGE, N. J. Roth Building.
OTTUMWA, IOWA. Iowa Steam Laundry Building.
OYSTER BAY, L. I. Schiff Residence.
PADUCAH, KY. Palmer House.
PALMER, MASS. Lynde Building.
PEABODY, MASS. O'Shea Building.
PEKIN, ILL. Arcade Building.
PHILADELPHIA, PA. John Wanamaker's New Department Store, Philadel-
 phia Rapid Transit Company's Subway, Friends' Asylum, Broad Street
 Realty Company's Bldg., Tradesmen's Trust Company's Bldg., Blum
 Brothers' Department Store, Reed Building, Majestic Apartments, Uni-
 versity Club, St. James Apartments, Methodist Hospital, Bornot Bldg.,
 Bricklayers' Hall, Elks' Home, North American Bldg., Sixth National
 Bank, Excelsior Laundry Bldg., Berg Brothers, Bourse Bldg., Berg-
 doll Garage, Bingham House, (new) Girard Trust Bldg., Mershon Bldg.,
 Dewees' Department Store, Philadelphia Electric Company, F. A. Poth
 Brewery.
PLATTSBURG, N. Y. St. Peter's College.
POCATELLO, IDAHO. First National Bank Building.
POLO, ILL. Building for T. P. Ruth.
PITTSBURG, PA. Pitcairn Building, F. C. Sauer's Architectural Offices,
 Pittsburg Gazette, Yoder Hotel, Meyer-Schlather Building.
PLAINFIELD, N. J. McCutcheon Bldg., Force & Co.'s Bldg., Codington Bldg.
PLYMOUTH, WIS. Thurman Building, Plymouth Exchange Bank Building.
PORTLAND, ORE. Tilford Bldg., Shea Bldg., Geiser Bldg., Dewey Hotel,
 Mountain Home Bldg., Healey Bldg., Baker Bldg., Masonic Temple
 Bldg., Parkhurst Bldg., Corbet Bldg., Multnomah Bldg., Wemme Bldg.,
 Oregon State Insane Asylum, Stearns Bldg., Rothschild Bldg., Gearing
 Bldg., Joseph Mercantile Bldg., Hazelwood Bldg., Graves Bldg., Downing
 Bldg., Lamson Bldg., Morgan Bldg., Oregon City Foundry Bldg., Pet-
 erson Bldg., Dr. Cornelius Bldg., Proudfoot Bldg., Beck Bldg., Gerlinger
 Bldg.
PORTSMOUTH, MASS. Y. M. C. A. Building.
QUINCY, ILL. Wilm Building.
RACINE, WIS. Y. M. C. A. Building.
RAHWAY, N. J. Foster Building, Lehman Building.
RALEIGH, N. C. H. Mahler's Sons' Building, Boylan Building, Lumsden's
 Store, Capital City Lane Company's Building.
READING, PA. Penn National Bank.
RENO, NEV. Reno Masonic Temple, Bank of Nevada.
RICHMOND, VA. Allen Hotel.
ROCHESTER, N. Y. West Side Department Store.
ROCKFORD, ILL. Rockford Trust Company's Building, Sumner Store Bldg.
ROSELLE, N. J. Horning Building.
RUMFORD FALLS, ME. Rumford Falls Power Company's Building.
ST. CLOUD, MINN. Edelbrock Brothers' Building.
ST. JOSEPH, MO. Masonic Cathedral.
SALEM, OHIO. Salem Hardware Company Building.
ST. LOUIS, MO. McKinney Bldg., Missouri School for the Blind, Holthaus
 Bldg., Thomas Dunn Bldg., Strasberger Bldg., Palmer & Weber Bldg.,
 Nevarre Bldg., W. R. Coyne's Bldg., Misval Bldg., Scharf Distilling
 Company, D. S. McClanahan Bldg., W. H. Zellsman Bldg.
ST. PAUL, MINN. Bell Bldg., Dreis' Drug Store, Edward Bldg., Central High
 School, Ryan Bldg., Fire Insurance Patrol Bldg., Ryan Hotel, Endicott
 Bldg., Baltimore Dairy Lunch Bldg., Benz Bldg., Allen Bldg., Dickerman
 Bldg., Sherman Hotel.
SALT LAKE CITY, UTAH. Swan Bldg., Halloran Bldg., New York Bldg.,
 The Metropole, Tribune Publishing Company's Bldg., Utah Gas and
 Coke Company's Bldg., Harron Bldg., Brigham Young Trust Company's
 Bldg., Orpheum Theatre, Methodist Church, Herald Bldg., Dooley Block,
 Walter Brothers' Store Bldg., Myers Bldg., Thompson-Murdock Bldg.,
 Payne Bldg., Mulrooney Stores, Dooley Bldg.
SAN FRANCISCO, CAL. Hirsch Bldg., McCoughlin Bldg., Stewart Bldg.,
 McDonough Bldg., Kavanaugh Bldg., Home Building and Loan Society
 Bldg., California Safe Deposit and Trust Company's Bldg., Shields
 Bldg., Dupui Bldg., Parrott Estate Bldg., Chin Luck Bldg., McLaughlin
 Bldg., Pretoria Hotel Bldg., Pringle Bldg., Koenig Bldg., Farrell Bldg.,

Rothchild Bldg., Buckley Bldg., Lynch Bldg., Pheby Bldg., Clunie Bldg.,
 Liebes Bldg., Bothin Real Estate Bldg., Waterhouse & Lester Bldg.,
 P. L. Pettigrew Company Bldg.
SAVANNAH, GA. National Realty Company's Building.
SCHEENECTADY, N. Y. Rubenstein Block, Bldg. for Westinghouse Company.
SCRANTON, PA. Ricca Building, J. H. Gunster Building.
SEATTLE, WASH. Hanson Bldg., Kinnear & Braney Bldg., Seller Bldg.,
 Y. M. C. A. Bldg., New York Bldg., Brown Estate Bldg., Post-Intelli-
 gencer Bldg., Schwabacher Bldg., Eitell Bldg., Hanback Bldg., Occident
 Trust Company's Bldg., Erickson Bldg., Arcade Bldg., Stirratt & Goetz
 Bldg., Waldorf Bldg., Hinckley Bldg., Franklin Bldg.
SEYMOUR, IOWA. Building for L. T. Chrisman Company.
SHADYSIDE, PA. Pennsylvania Railroad Company's Station.
SOUTH MANCHESTER, CONN. Cheney Brothers' Mills.
SHEBOYGAN, WIS. Geele & Co.'s Building.
SIOUX CITY, IOWA. Bolton & Brown Building.
SOUTH BEND, IND. Cohn & Sons' Building.
SOUTH FRAMINGHAM, MASS. Amsden Block.
SPOKANE, WASH. Granite Building, Rosenhaupt Building, Paulson Bldg.
STOUGHTON, WIS. Department Store Company Building.
SPRINGFIELD, ILL. Reisch & Flynn Building.
STATESVILLE, N. C. Statesville Loan and Trust Company's Bldg., Evans
 Hardware Company's Stores, 1 and 2.
STERLING, ILL. First National Bank Building.
SULLIVAN, IND. Krug Store Building.
SWARTHMORE, PA. Philadelphia, Baltimore and Washington Railroad
 Station.
SYRACUSE, N. Y. First National Bank, New Rosenbloom Bldg., Frick Brothers'
 Factory Bldg., Pike Block, Fowler Bldg., John Single Bldg., Herald
 Bldg.
TALBOTTON, GA. Building for John T. Bartlett.
TARBORO, N. C. The Bridgers Building.
TAUNTON, MASS. Skinner Block.
TAYLORVILLE, ILL. Shumway Building, Taylorville Bank Building.
TOLEDO, OHIO. Halsted Bldg., Crystal Theatre, Hofbrau Cafe, Mandler
 Arcade, Ohio Savings Bank and Trust Company's Bldg.
TOPEKA, KAN. Snyder Store Building, Building for Hargreaves & Co.
TERRE HAUTE, IND. Cook Building, Plaza Hotel.
TONOPAH, NEV. Tonopah Club.
TWIN FALLS, IDAHO. Davis Building.
TWO RIVERS, WIS. Two Rivers Hotel.
WAMEGO, KAN. Iron-Clad Store.
UHRICHVILLE, OHIO. Helea, Cooper & Westhafer Building.
UNIONTOWN, PA. Hagan Building.
WALLACE, IDAHO. Bank of Commerce Building.
WARREN, PA. Carver House Annex.
WASHINGTON, D. C. U. S. Government's Filtration Pump House, Y. M. C. A.
 Bldg., Wurdeman Bldg., Bornot Bldg., Robbins Bldg., American
 National Bank Bldg.
WATERBURY, CONN. Scovill Manufacturing Company's Building.
WEBB CITY, MO. Murry Building.
WILKES-BARRE, PA. Weiss Bldg., Lawson Bldg., Seeherman & Gross
 Bldg., New County Jail.
WICHITA, KAN. Walters Store Building.
WILLIAMSTON, N. C. Farmers and Merchants' Bank Building.
WILMINGTON, DEL. Union National Bank, St. Mary's Church, Harris Bldg.
WATERLOO, IOWA. Irving Hotel.
WINSTON-SALEM, N. C. Reynolds-Huske Building, Cranford Building.
WHITE PLAINS, N. Y. Miles Building.
YORK, PA. Despatch Publishing Company's Building.
YOUNGSTOWN, OHIO. Empire Hotel, Handel Hotel, Medbury Building.
FOREIGN.
HONOLULU. T. H. McCandless Building.
SAN JUAN, PORTO RICO. Public School Building.
TORONTO, CAN. Traders' Bank Building.
VANCOUVER, B. C. Wash Block, Byron Anderson Block, Ascot Hotel, Stew-
 art Block, Y. M. C. A. Bldg.
VICTORIA, B. C. Central Pacific Railroad Hotel, Victoria Hotel.
WINNIPEG, MAN., CAN. Union Bank Building.
GUAYAQUIL, ECUADOR, S. A. Office Building.

THE LARGEST DEPARTMENT STORE IN THE WORLD

(Showing first quarter section now complete)



Pavement Lights with "Bar-Lock" Wrought Steel Construction, "3"-Point Prisms are being used to encircle the Building, which will occupy a whole block.

Detailed blueprints or any additional information desired
may be had by return mail from

AMERICAN BAR-LOCK COMPANY

OFFICES AND WORKS

26th Street and Pennsylvania Avenue, PHILADELPHIA

"BAR-LOCK" is represented in every large city in the United States and Canada. Write for name of representative in your section.