

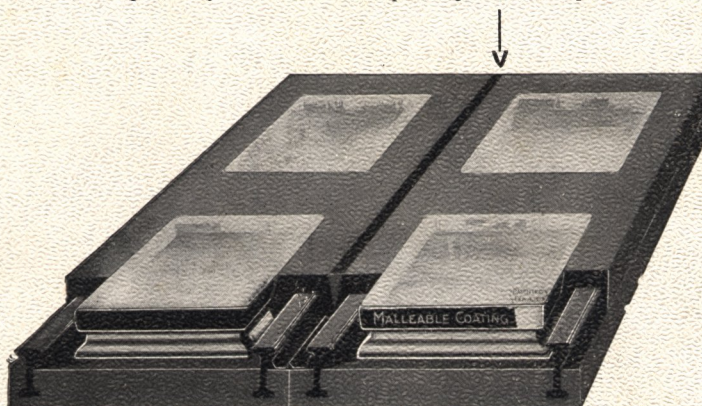


# IMPLEX SKYLIGHTS

## GUARANTEED

Water - proof — Fire - proof — Burglar - proof  
Sound-proof—No Repairs—Unrestricted Light

Expansion joint filled with Simplex Expansion Compound



Water-tight Expansion Gutter

## SIMPLEX DOUBLE-REINFORCED CONCRETE CONSTRUCTION

NOTE THE HEAVY I-BEAM REINFORCEMENT

# AMERICAN BAR LOCK CO.

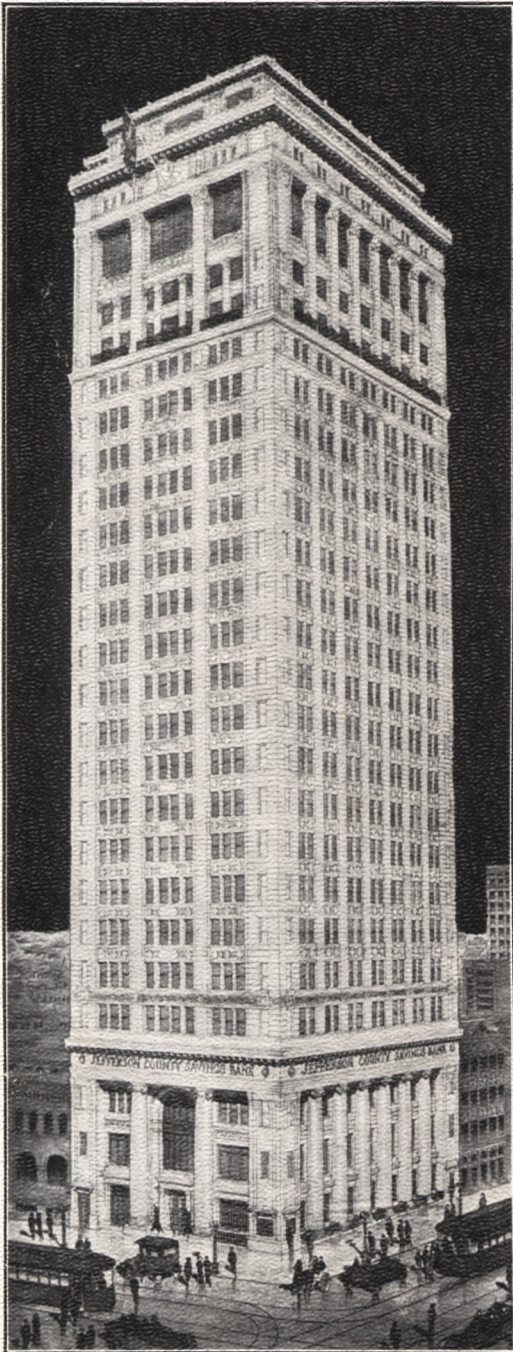
Main Office and Works

Twenty-sixth and  
Pennsylvania Avenue **PHILADELPHIA**

Branch Offices and Representatives in all Large Cities



# SIMPLEX SKYLIGHTS



JEFFERSON COUNTY SAVINGS BANK, BIRMINGHAM, ALA.  
SIMPLEX SKYLIGHTS USED OVER BANKING ROOM

{ Wm. C. WESTON, *Architect*

## DESCRIPTION

**S**IMPLEX system of skylights consists of a pre-formed factory-made slab of reinforced concrete insuring the proper spacing and placing of reinforcement. Pre-formed slab is  $1\frac{1}{4}$ " in thickness with heavy I-beam reinforcement one way and twisted steel rods in the other direction which is sufficient in itself to carry heavy loads. The finished work being  $2\frac{1}{4}$ " thick, is so constructed that the glass, which measures 6" x 6" fits true and straight, making it impossible to set lenses out of perfect alignment.

## EASILY INSTALLED

**Simplex system requires no forms or carpenter work to be used in installing. Nothing to be removed when cement work is finished.**

Simplex therefore adapts itself especially to installations that must be finished quickly and with the least possible dirt and confusion on the interior of the building.

**Can be installed by any cement finisher at a lesser cost than any other system.**

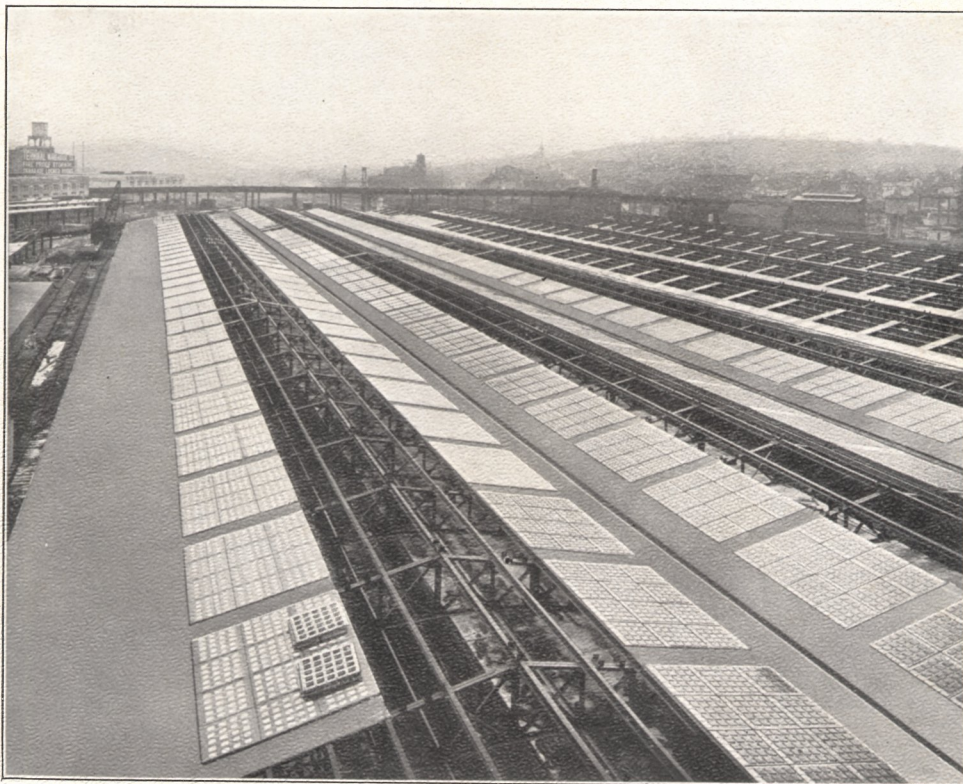


# SIMPLEX SKYLIGHTS

The largest contract for Concrete Skylights ever placed.  
Approximately 150,000 square feet.

## ORNAMENTAL APPEARANCE

THE soffit or under-surface of Simplex being factory-made is always true and smooth, lending itself to decorative effects impossible to obtain in any other system, there being no exposed metal to rust or corrode and the concrete, being a non-conductor of heat as well as an absorbent of moisture, condensation is wholly avoided.



KANSAS CITY UNION STATION. SHOWING PORTION OF WEST TRAIN SHEDS COMPLETED  
JARVIS HUNT, *Architect*      GEO. A. FULLER CO., *General Contractors*

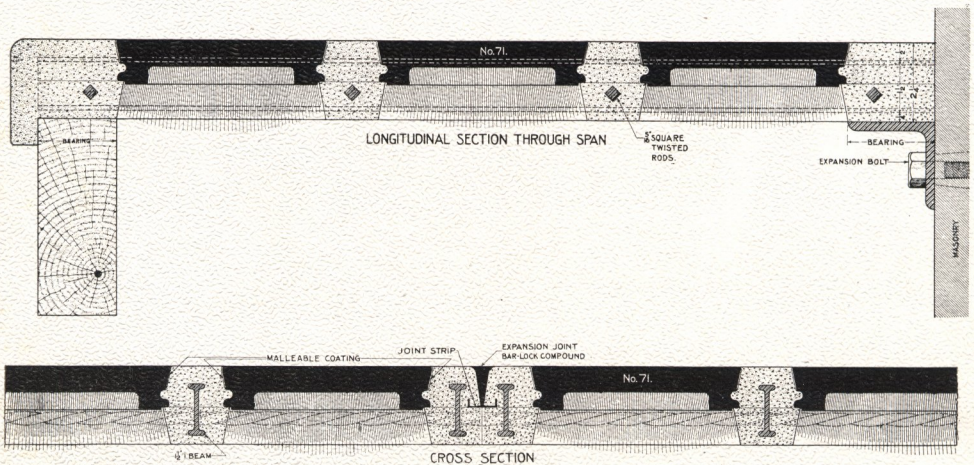
## MADE READY TO FIT OPENINGS

The slabs being made in sizes suitable to fit any opening, are then placed in position and cemented without the delays necessitated by the building of wooden forms, or making the castings, etc.

**STRONGEST AND MOST ORNATE SKYLIGHT  
CONSTRUCTION EVER PERFECTED**



# SIMPLEX SKYLIGHTS

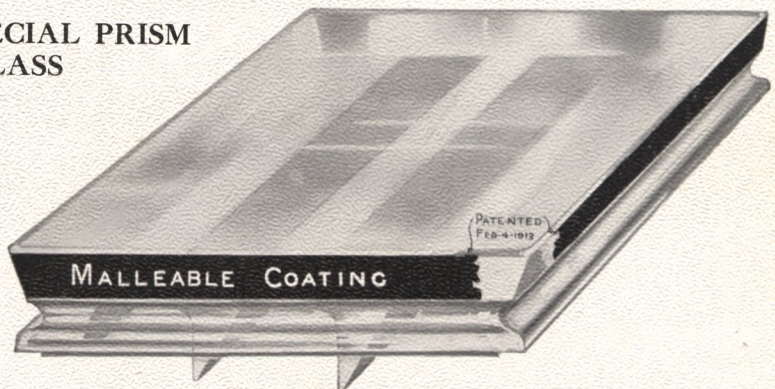


## TANEX GLASS

used in Simplex Construction is not only made from a specially prepared soft, tough mixture but each piece is separately tested, thoroughly annealed, and coated on the sides with a patented cushion of malleable coating which effectually prevents all cracking or breakage from expansion or contraction. Simplex lenses being of pure crystal annealed glass permit of the full unrestricted volume of light being transmitted and diffused which is impossible in other forms of skylight glass.

### NO. 72 SPECIAL PRISM GLASS

measuring  
6" x 6" for  
projecting  
more light in  
any given  
direction.  
5/8" thick  
through wear-  
ing surface



**TANEX** glass also will not break or crack from vibration owing to the tremendous strength and rigidity of the Simplex Pre-formed Slab in which the lenses are installed.



# SIMPLEX SKYLIGHT CONSTRUCTION

## SHOWING ADAPTABILITY FOR TRAIN SHEDS

Marquises, Balconies, Roof Gardens, Floor Lights, etc.  
No screens required. Can be walked upon.



PORTION OF INCOMPLETED TRAIN SHEDS, KANSAS CITY UNION STATION  
KANSAS CITY, MO.

NOT AFFECTED BY ACID OR SMOKE FUMES

JARVIS HUNT, Chicago  
Architect

GEO. A. FULLER CO.  
General Contractors



# SIMPLEX REPLACEABLE SIDEWALK AND FLOOR LIGHTS

## ABSOLUTELY GUARANTEED

**Water-proof — Fire-proof — Burglar-proof — Sound-proof**

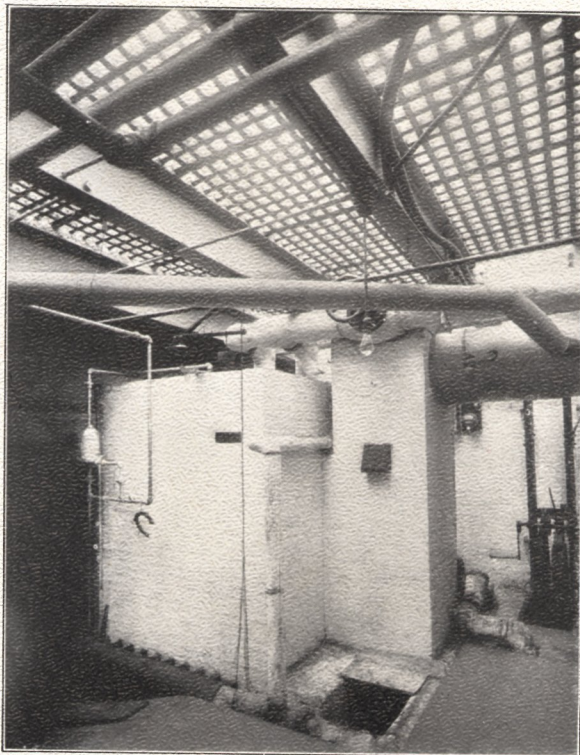
**L**ARGEST glass surface that can be obtained in any construction consistent with strength. No repairs will ever be necessary except from excessive abuse.

### REPLACEABLE GLASS

Simplex replaceable glass can be replaced in a few minutes if any should become broken through accident, without damaging the top coat of cement or defacing the balance of the work. The repairs will not show or injure the installation or appearance of the work.

#### No. 60

Round,  
plain  
glass  
used in  
this  
building



#### A SUPREME TEST OF EFFICIENCY

OELSCHLAGER BLDG., 110 E. 23D STREET, NEW YORK CITY. Showing view of Simplex Vault Lights glazed with No. 60 Tanex Malleable Coated Glass over **BOILER ROOM.**

**NO LEAKS — NO CONDENSATION — NO BROKEN GLASS**

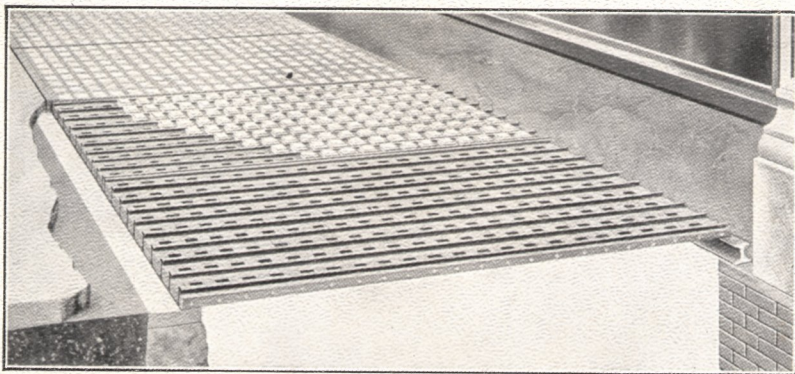
**NOTE THE VOLUME OF LIGHT**



## SIMPLEX REPLACEABLE SIDEWALK AND FLOOR LIGHTS

**S**IMPLEX construction has all the strong features others lack and none of the objectionable features others possess.

Many years of experience and practical appreciation of the previous defects in other forms of sidewalk lights have enabled us to produce the most perfect sidewalk light construction ever placed on the market.



SHOWING COMPLETED WORK AND PRE-FORMED SLABS IN PROCESS OF INSTALLATION  
NO CROSS BEAM STIFFENERS REQUIRED—SAVING COST AND  
INCREASING LIGHT AREA

Note the absence of forms of any description, none being required in this system of construction. The pre-formed factory-made slab providing centering for reception of lenses and affording an ornate, perfectly made soffit.

**This system can be installed by your own mechanics.**



# SIMPLEX SIDEWALK AND FLOOR LIGHTS

## BURGLAR PROOF

No. 61  
square,  
plain  
glass  
used



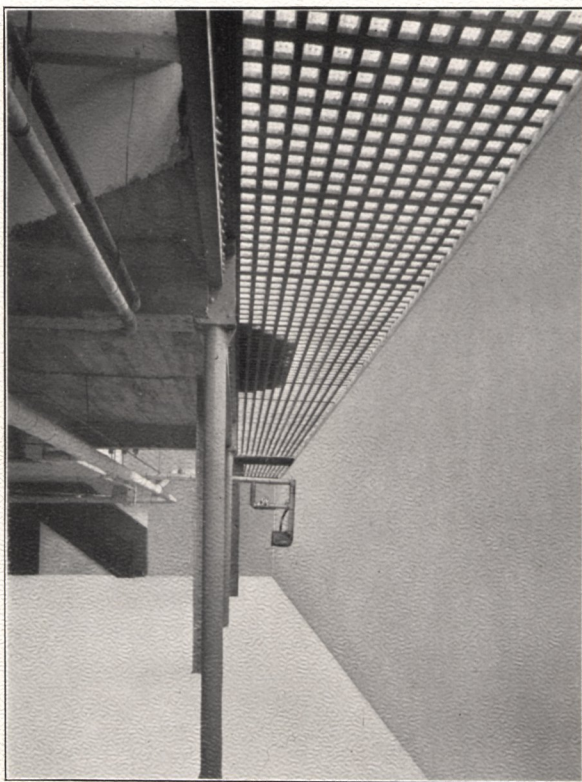
PONCE DE LEON APARTMENTS, ATLANTA, GA.  
GEO. A. FULLER CO., *General Contractors*

Simplex Sidewalk Lights used to illuminate basement of this building



# SIMPLEX SIDEWALK AND FLOOR LIGHTS

NO EXPOSED METAL TO RUST



**No. 62**

3-point prism  
glass used in the  
sidewalk of this  
building

INTERIOR KOOP DEPARTMENT STORE, CINCINNATI, OHIO.  
RAPP, ZETTLER & RAPP, Architects

Showing ornate soffit of Simplex Sidewalk Lights

NOTE THE LARGE GLASS AREA



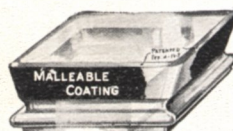
# SIMPLEX REPLACEABLE SIDEWALK AND FLOOR LIGHTS

**A**N all-concrete construction containing all of the features for which Architects and Owners have long been clamoring, for the following reasons:

- First.** No breakage of glass from expansion or contraction.
- Second.** Can be replaced without damage to the concrete surface.
- Third.** Greater strength and no vibration.
- Fourth.** No leakage.
- Fifth.** Will not wear out in fifty years.
- Sixth.** Does not require experts to install.
- Seventh.** No exposed metal on top or underneath to rust.
- Eighth.** Pre-formed slabs are factory made, insuring proper mixture and quality of cement and sand (mixed 1 part best Portland Cement and 2 parts coarse sharp sand).
- Ninth.** Cheaper than other concrete constructions which have proved so unsatisfactory in many ways.
- Tenth.** Bearings are only required on two sides, providing a continuous glass surface and dispensing with the costly and light-obstructing cross beams.
- Eleventh.** The only reinforced concrete construction that can be installed by ordinary cement mechanics.
- Twelfth.** Beautiful ornate finish underneath requiring no glass sash to hide it in first-class interiors such as banking rooms, restaurants, private residences, etc.
- Thirteenth.** Concrete being a poor conductor of heat as well as an absorbent of moisture does away with condensation so prevalent in all other systems.



**No. 60**  
3 inch diameter



**No. 61**  
3 inch plain square



**No. 62**  
3 inch square, 3 point-prism



**No. 63**  
3 inch square, single-pendant prism



**No. 64**  
3 inch diameter, 2-point prism



# S I M P L E X   C O N S T R U C T I O N

## “SPECIFICATION”

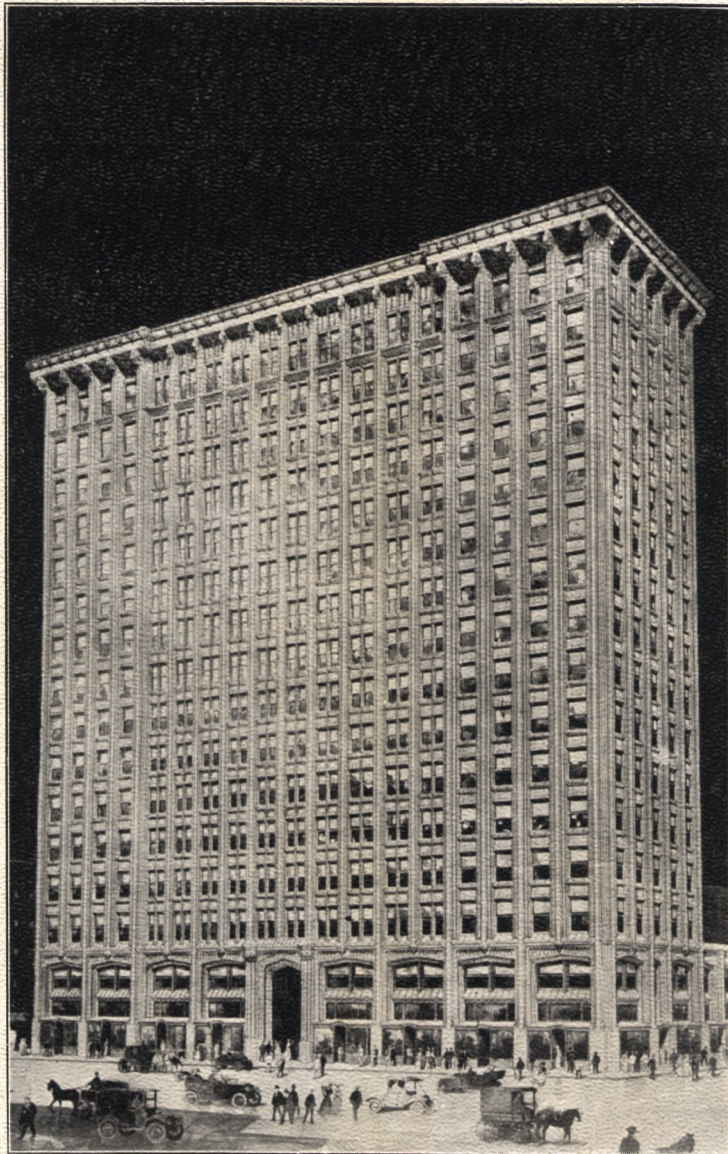
“**Skylights**  
**Sidewalk Lights**  
**Floor Lights** } shall be of double  
reinforced concrete  
construction with  
factory-made pre-formed slabs, having  
heavy I-beam tension members one way,  
with transverse reinforcement of twisted  
steel rods, using No. Tanex quality  
annealed glass with cushion of malleable  
coating. All work to be guaranteed  
against defective workmanship and  
material, maintained water-tight, and  
glass guaranteed against breakage from  
expansion or contraction for a period of  
two years.”

Simplex double-reinforced concrete construction is covered by the strongest patents ever issued on sidewalk lights, and will be protected against any infringements.



# SIMPLEX REPLACEABLE SIDEWALK AND FLOOR LIGHTS

Surround the finest Office Building in the South



**No. 62**

3-point  
prism  
used in  
this  
building

**No. 61**

square,  
plain  
glass  
used in  
this  
building

HEALEY BUILDING, ATLANTA, GA.  
MORGAN & DILLON, *Architects* R. M. WALKER, *General Contractor*

Write immediately for detailed blue-prints, name of nearest representative and lowest prices.

**AMERICAN BAR LOCK COMPANY**  
26th and Pennsylvania Avenue

Philadelphia, Pa.