

CATALOGUE

PRESSED AND BLOWN GLASSWARE

CONSISTING OF

Tableware, Tumblers, Bar Goods, Confectioners' Supplies, Druggists' Sundries and Surgical Supplies, Photographic Supplies, Paper Weights, School Inks, Seed Cups, Bird Baths, Vault, Sidewalk and Skylight Glass

Canton Glass Company

MARION, INDIANA, U. S. A.

1 9 0 4

Special attention given to the making and working of Private Molds.

Agents in all the principal cities in the United States and Canada.

Our goods are fire polished and annealed with natural gas which is used in our factory.

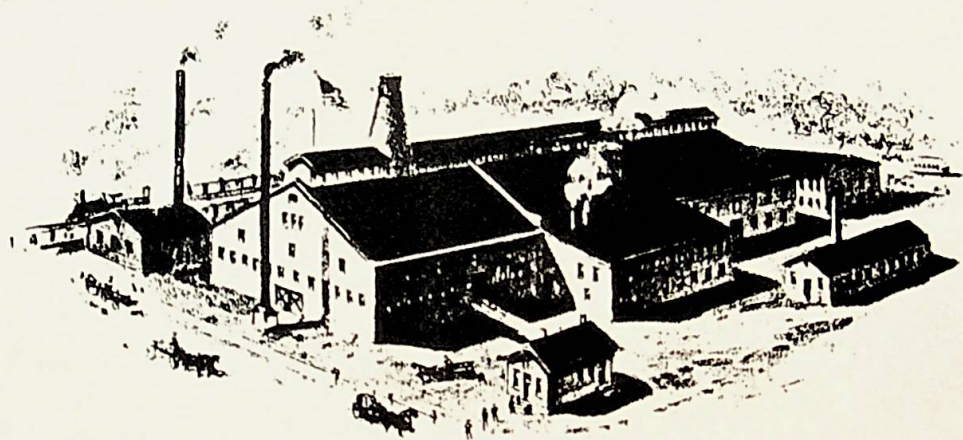
This COPY of the 1904 catalog is made possible by the open policy of SHARING information advanced by
The WEST VIRGINIA MUSEUM of AMERICAN GLASS, Ltd.

P.O. Box 574

Weston, West Virginia 26452

<http://members.aol.com/wvmuseumofglass/>

Purchasing a copy directly from the museum allows you a better quality copy and enables the acquisition and sharing of other glass trade catalogs. PLEASE respect WVMAG's efforts to acquire and share glass history by obtaining a copy from the Museum and not reproducing this imprint. Numerous other glass catalogs are available upon inquiry.





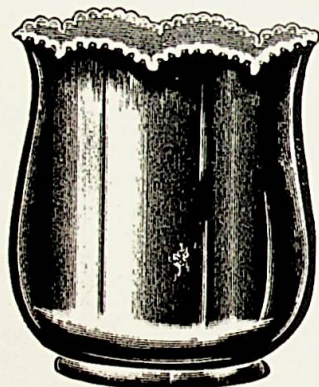
WE ARE PRESENTING this our second annual catalogue, we wish to thank our many customers for their liberal patronage and appreciation of our efforts in supplying their wants from our line of pressed and blown glassware.

Encouraged by a prosperous business, we desire to again solicit your orders for the coming year, feeling confident that our experience and improved facilities bespeak a better condition than before to supply the trade with high-grade glass, more up-to-date patterns, perfect workmanship, and a plant equipped with every convenience for prompt deliveries. With the assurance of an increasing number of patrons we trust we will merit the favor of your trade for the coming season.

Our facilities for the making and working of private molds are unsurpassed.

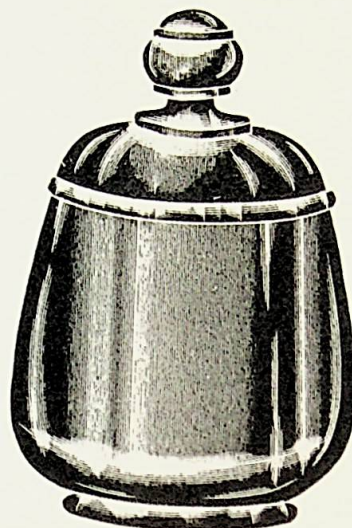
Yours very truly,

CANTON GLASS COMPANY,
Marion, Indiana, U. S. A.



No. 411—Spoon.
Packed 9 doz. in barrel.

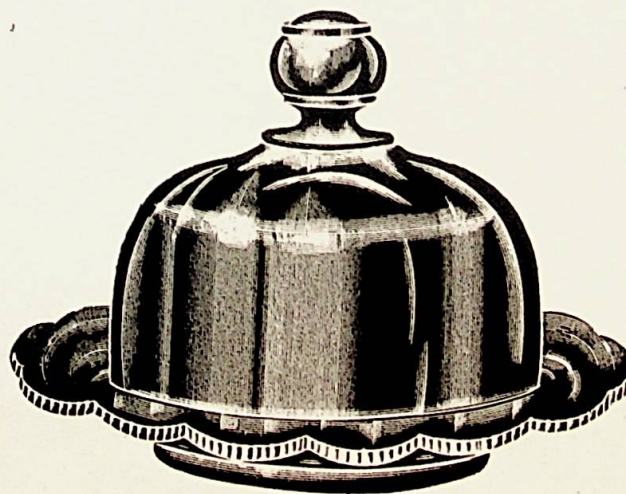
SET PACKED 1½ DOZEN
IN BARREL.



No. 415—Sugar and Cover.
Packed 6 doz. in barrel.

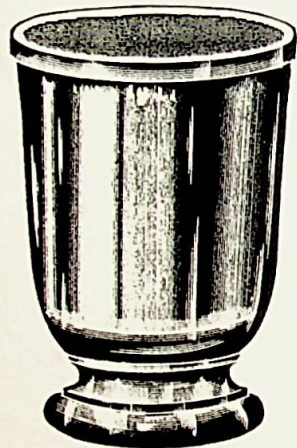


No. 414—Cream, Stuck Handle.
Packed 9 doz. in barrel.

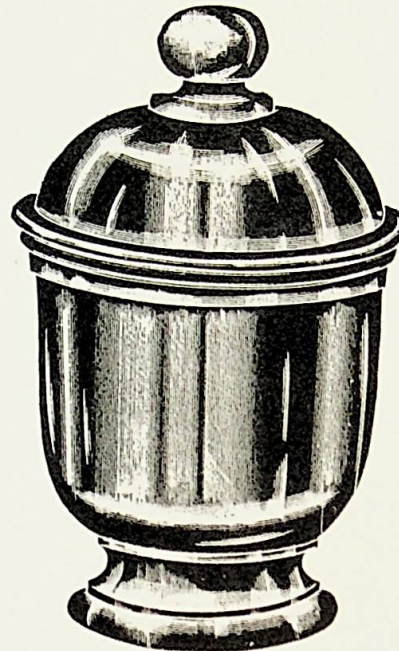


No. 418—Butter and Cover.
Packed 4½ doz. in barrel.

QUANTITY PACKED IN A BARREL MAY VARY. SAME IS ESTIMATED AND NOT GUARANTEED.



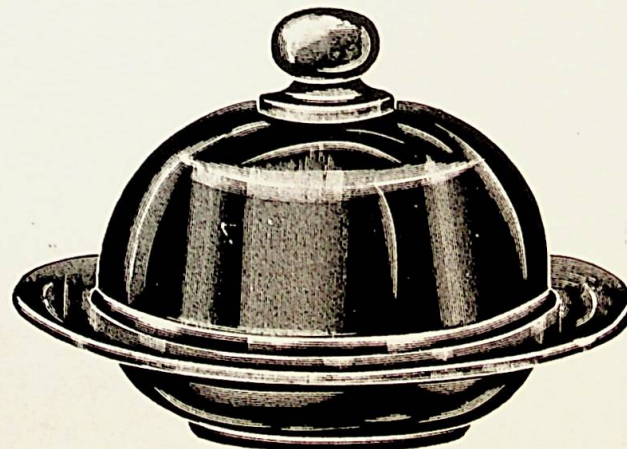
No. 303—Spoon.
Packed 10 doz. in barrel.



No. 301—Sugar and Cover
Packed $7\frac{1}{2}$ doz. in barrel.



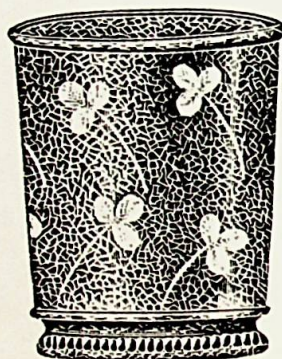
No. 304—Cream.
Pressed Handle.
Packed 9 doz. in barrel.



No. 306—Butter and Cover.
Packed $3\frac{3}{4}$ doz. in barrel.

SET PACKED 11-2 DOZ.
IN BARREL.

QUANTITY PACKED IN A BARREL MAY VARY. SAME IS ESTIMATED AND NOT GUARANTEED.

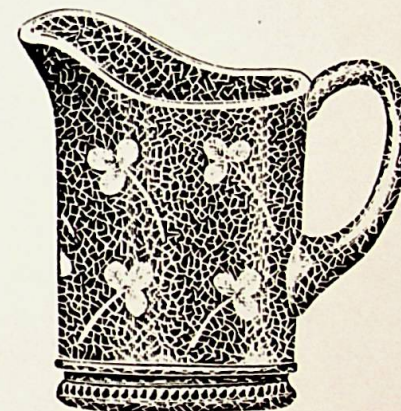


No. 202—Spoon.
Packed 9 doz. in barrel.

SET PACKED 2 DOZEN
IN BARREL.



No. 203—Sugar and Cover.
Packed 7 doz. in barrel.



No. 201—Cream.
Packed 9 doz. in barrel.

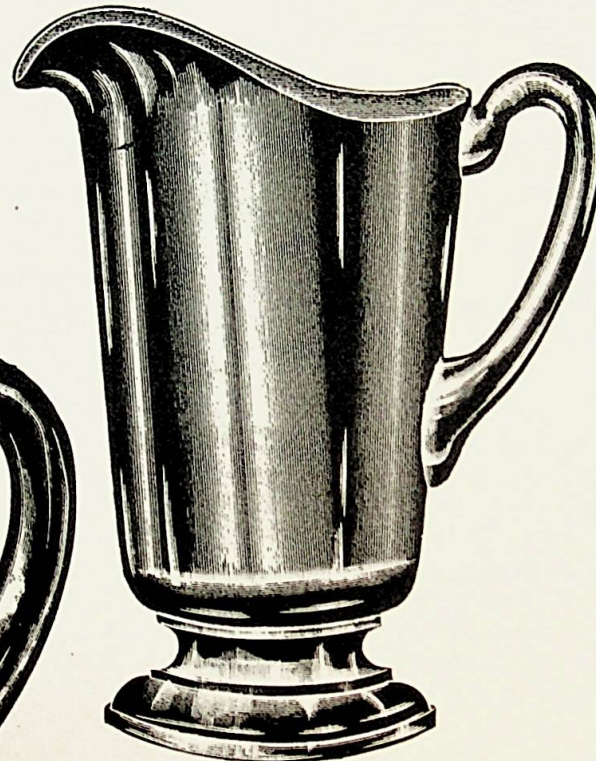


No. 200—Butter and Cover.
Packed 5 doz. in barrel.

QUANTITY PACKED IN A BARREL MAY VARY. SAME IS ESTIMATED AND NOT GUARANTEED.



No. 70—Blown Tankard, Stuck Handle.
Packed 1½ doz. in barrel.



No. 317—Quart Jug.
Packed 3 doz. in barrel.

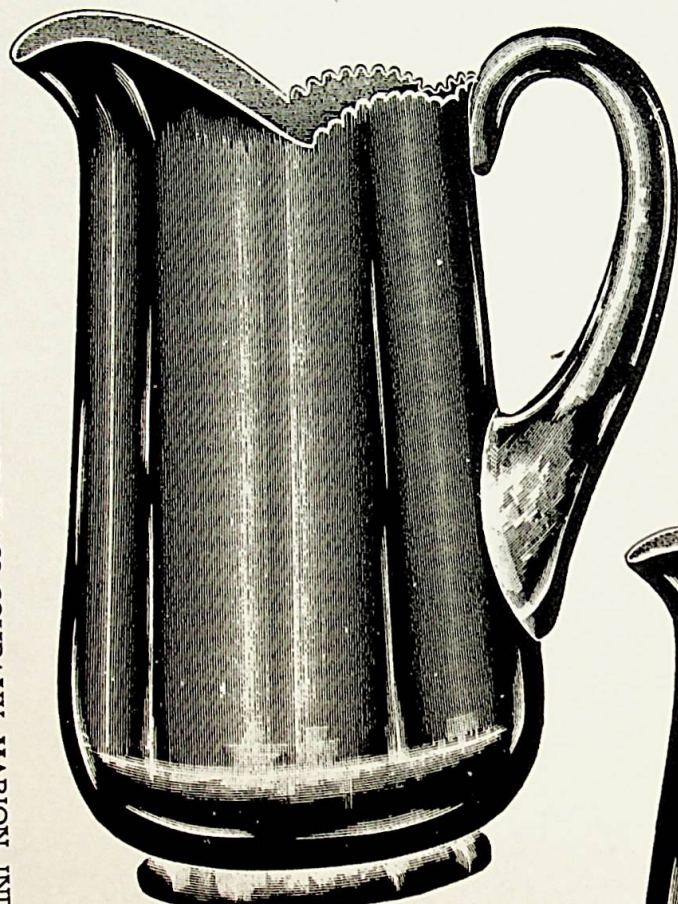
No. 317½—3-Pint Jug.
Packed 2 doz. in barrel.

No. 318½—One-Half Gallon Jug.
Packed 2 doz. in barrel.
Pressed Handle.



No. 215—One-Half Gallon Pitcher.
Pressed Handle.
Packed 2 doz. in barrel.

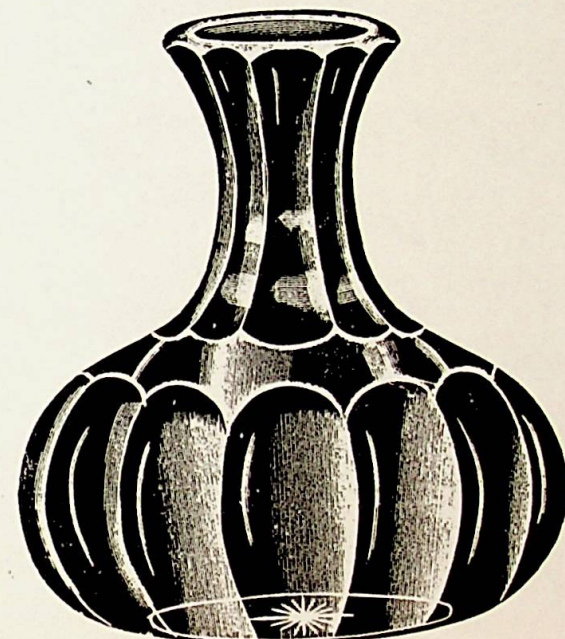
CANTON GLASS COMPANY, MARION, INDIANA.



No. 405—One-Half Gallon Tankard.
Packed 2 doz. in barrel.
Stuck Handle.

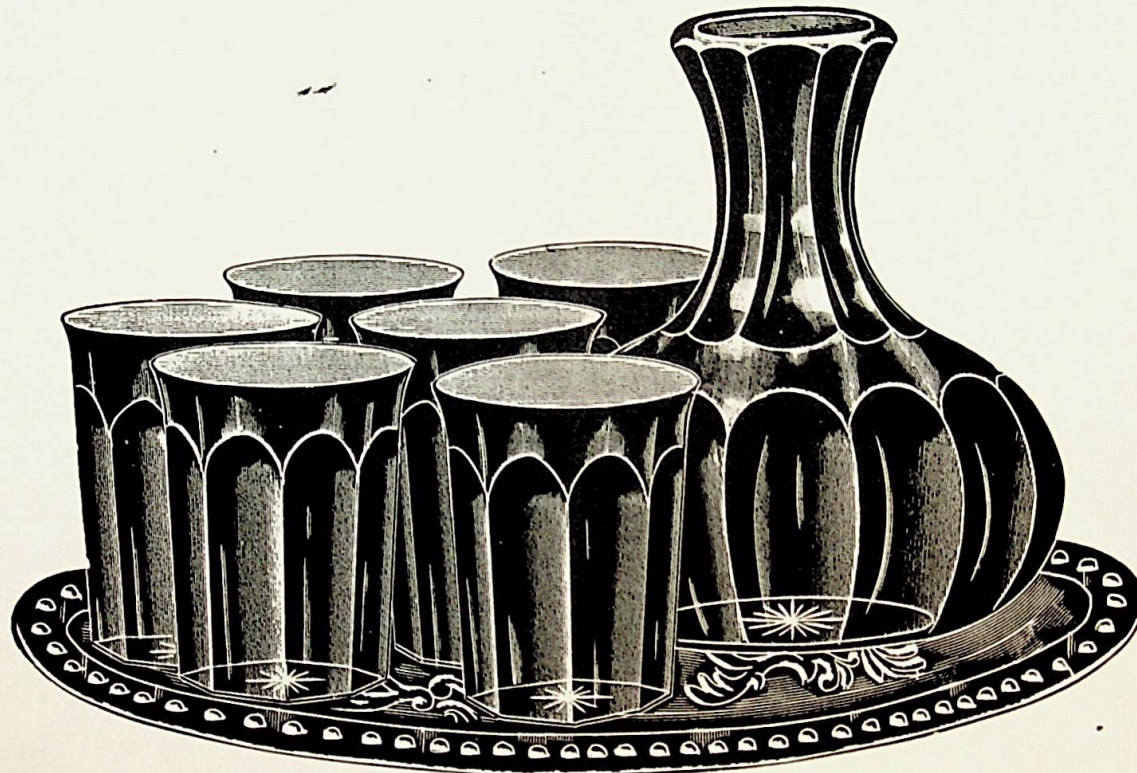


No. 403—Half-Gallon Jug.
Packed 2 doz. in barrel.
Stuck Handle.



No. 420—Quart Water Bottle.
Packed 2½ doz. in barrel.

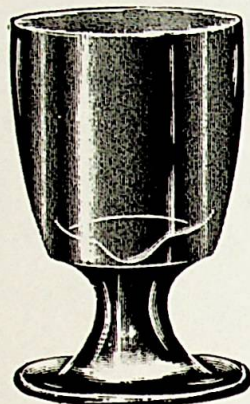
QUANTITY PACKED IN A BARREL MAY VARY. SAME IS ESTIMATED AND NOT GUARANTEED.



No. 421—Peerless Water Set
Blown Bottle. Pressed Glasses.
Packed $1\frac{1}{2}$ doz. in barrel.
Furnished Without Tray.

CANTON GLASS COMPANY, MARION, INDIANA.

QUANTITY PACKED IN A BARREL MAY VARY. SAME IS ESTIMATED AND NOT GUARANTEED.



No. 837—Egg.

Packed 24 doz. in barrel.



No. 839—Egg.

Packed 24 doz. in barrel.



No. 407—Quart Water Bottle.

Packed 2½ doz. in barrel.



No. 838—Egg.

Packed 18 doz. in barrel.

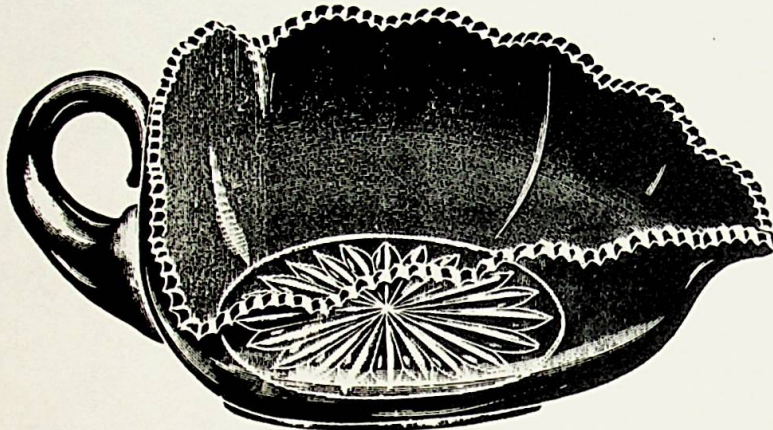


No. 839½—Double Egg Cup.

Packed 24 doz. in barrel.

CANTON GLASS COMPANY, MARION, INDIANA.

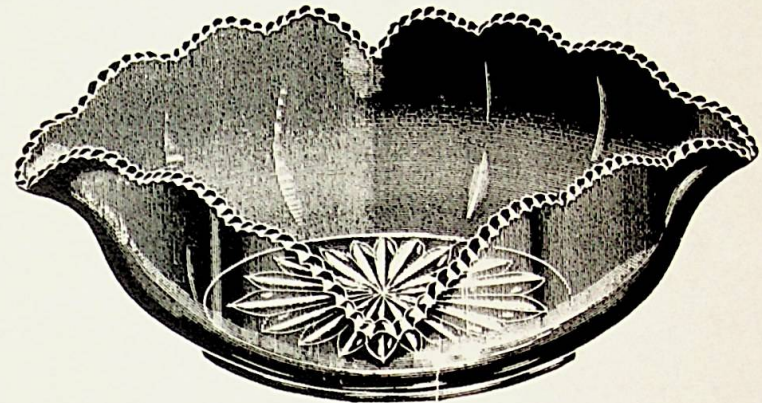
QUANTITY PACKED IN A BARREL MAY VARY. SAME IS ESTIMATED AND NOT GUARANTEED.



No. 422—7 in. Handled Olive, Crimped.

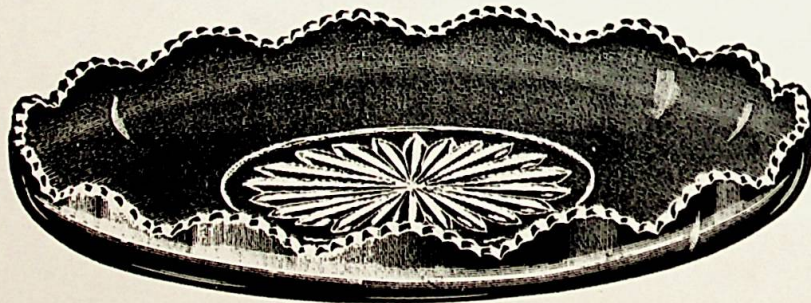
Stuck Handle.

Packed 6 doz. in barrel.



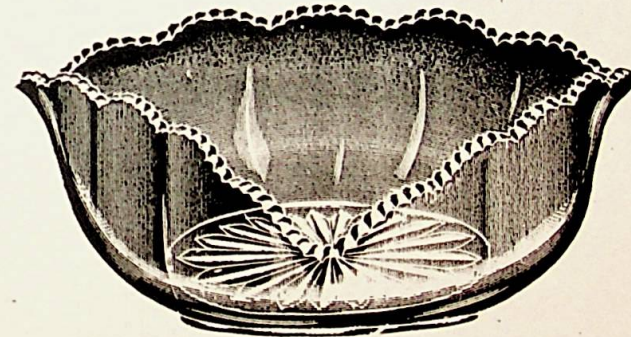
No. 424—7 in. Berry, Crimped.

Packed 7 doz. in barrel.



No. 423—9 in. Cabaret, Crimped.

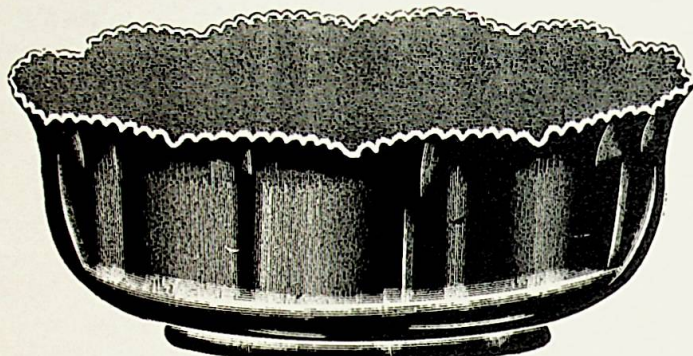
Packed 10 doz. in barrel.



No. 425—7 in. Berry, Crimped.

Packed 7 doz. in barrel.

CANTON GLASS COMPANY, MARION, INDIANA.



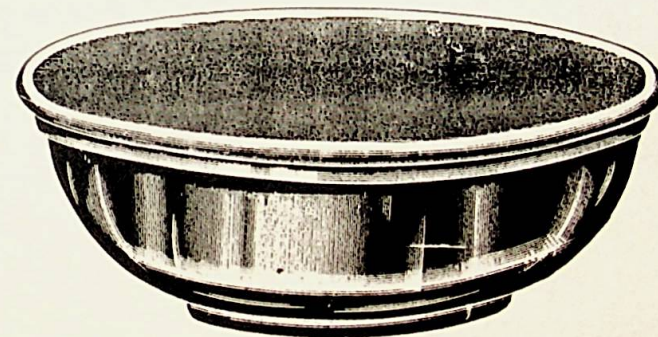
No. 412—8 in. Nappy.
Packed 4 doz. in barrel.



No. 302—7 in. Comport.
Packed 4½ doz. in barrel.

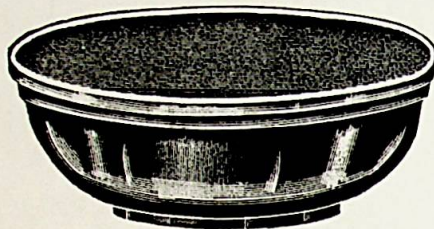


No. 213—8 in. Nappy.
Packed 6 doz. in barrel.



No. 300—7 in. Nappy.
Packed 6 doz. in barrel.

QUANTITY PACKED IN A BARREL MAY VARY. SAME IS ESTIMATED AND NOT GUARANTEED.



No. 305—4½ in. Nappy.

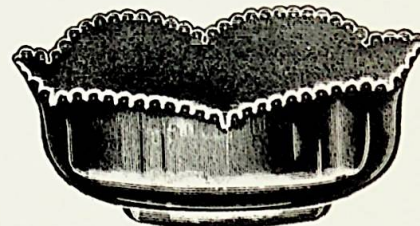
Packed 25 doz. in barrel.

No. 305—6 in. Nappy.

Packed 8 doz. in barrel.

No. 305—7 in. Nappy.

Packed 6 doz. in barrel.



No. 417—4½ in Nappy.

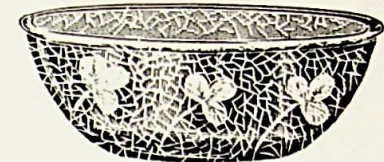
Packed 25 doz. in barrel.

No. 417—6 in. Nappy.

Packed 8 doz. in barrel.

No. 414—7 in. Nappy.

Packed 5 doz. in barrel.



No. 211—4 in. Nappy.

Packed 25 doz. in barrel.

No. 211—6 in. Nappy.

Packed 8 doz. in barrel.

No. 211—7 in. Nappy.

Packed 6 doz. in barrel.



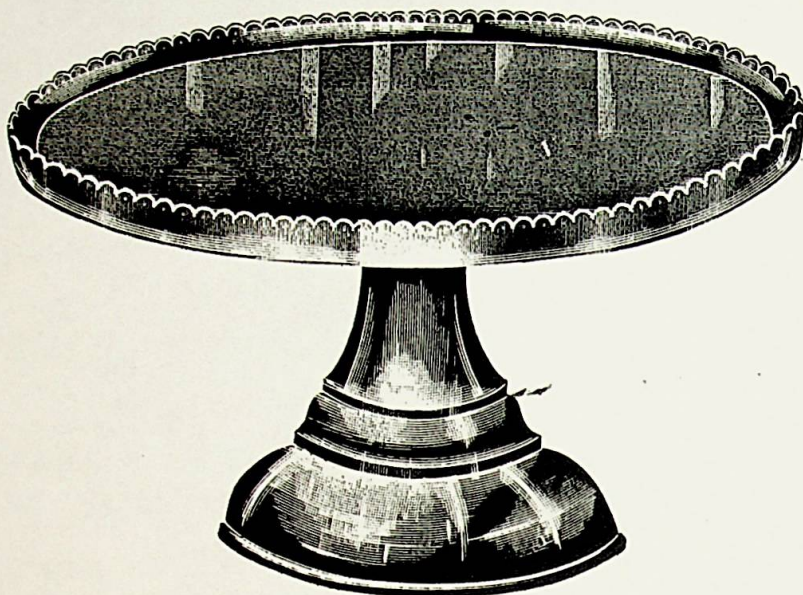
No. 207—Plate, 8 in.

Packed 12 doz. in barrel.

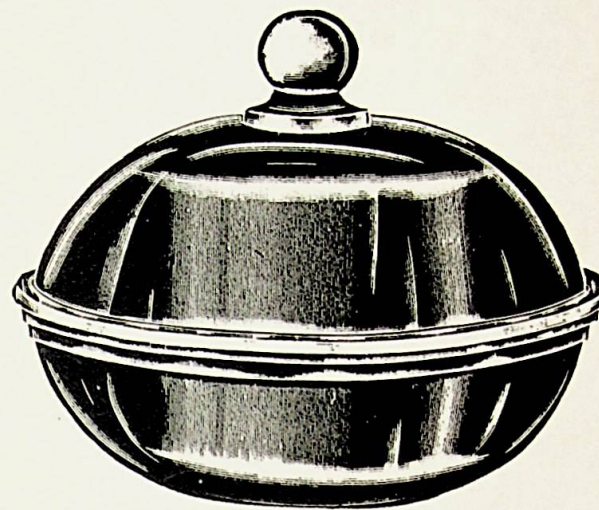


No. 401—Finger Bowl.

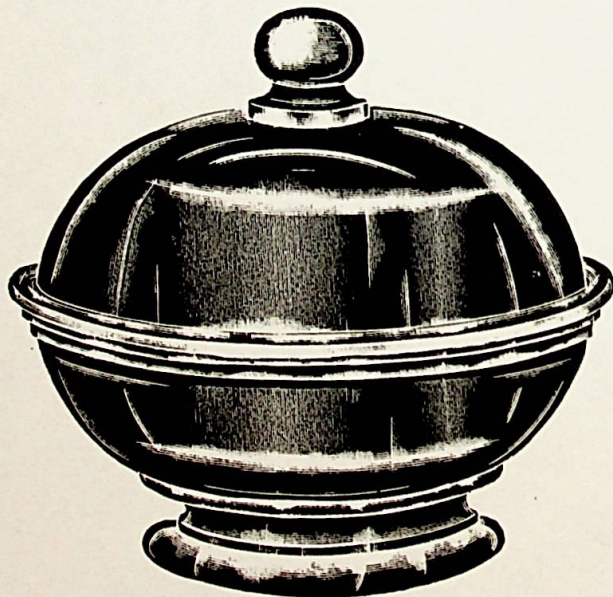
Packed 15 doz. in barrel.



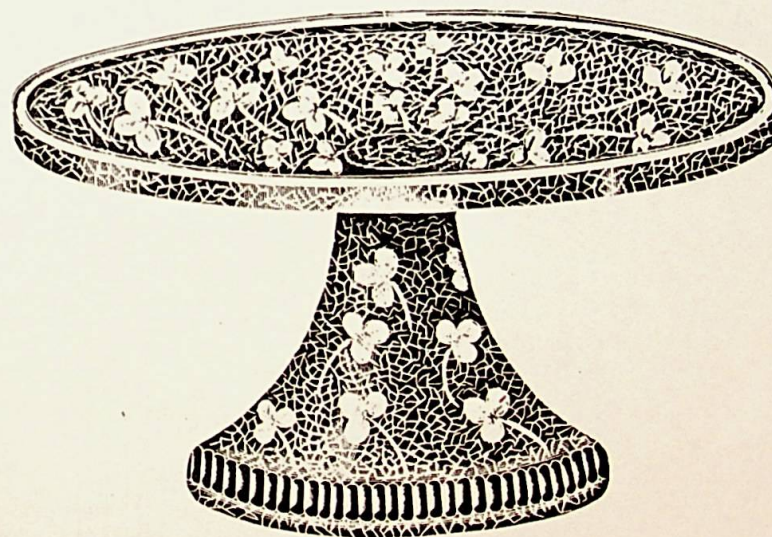
No. 404—9 in. Salver.
Packed 1½ doz. in barrel.



No. 312—7 in. Nappy and Cover.
Packed 4½ doz. in barrel.



No. 311—7 in. Comport and Cover.
Packed 4 doz. in barrel.

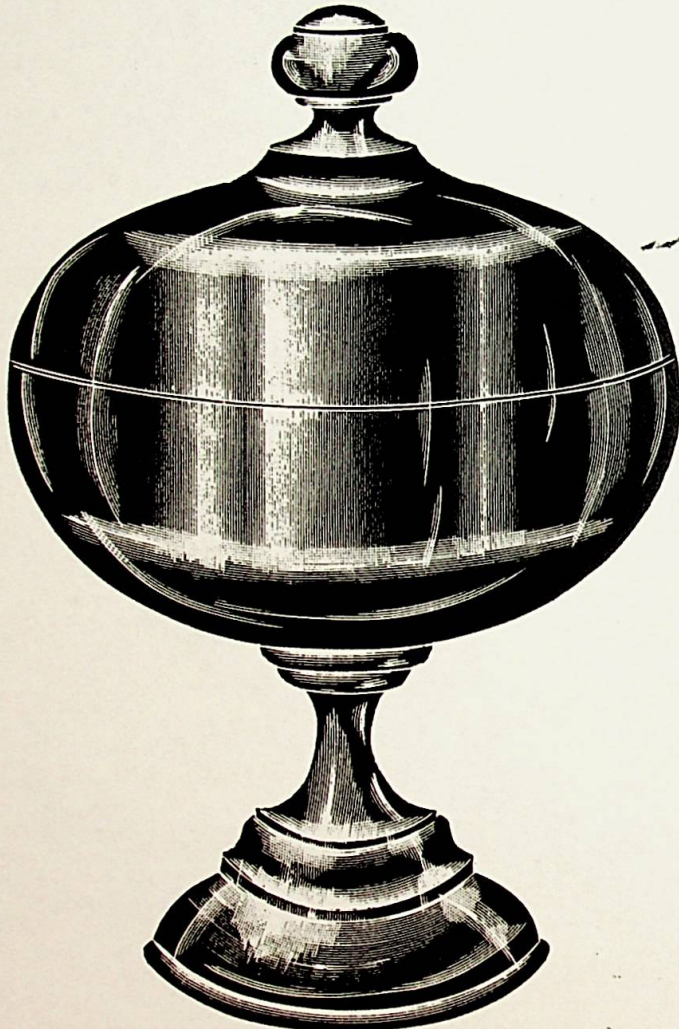


No. 205—Salver, 8 in.
Packed 1½ doz. in barrel.

QUANTITY PACKED IN A BARREL MAY VARY. SAME IS ESTIMATED AND NOT GUARANTEED.

SCALE HALF SIZE.

17

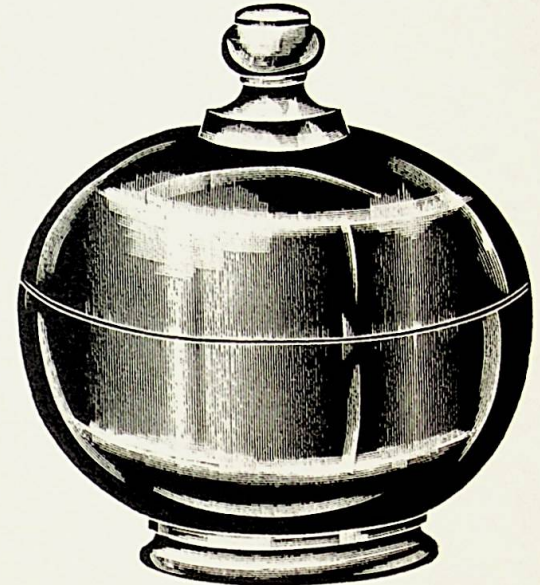


No. 408—8 in. Bowl and Cover.
Packed 1 doz. in barrel.

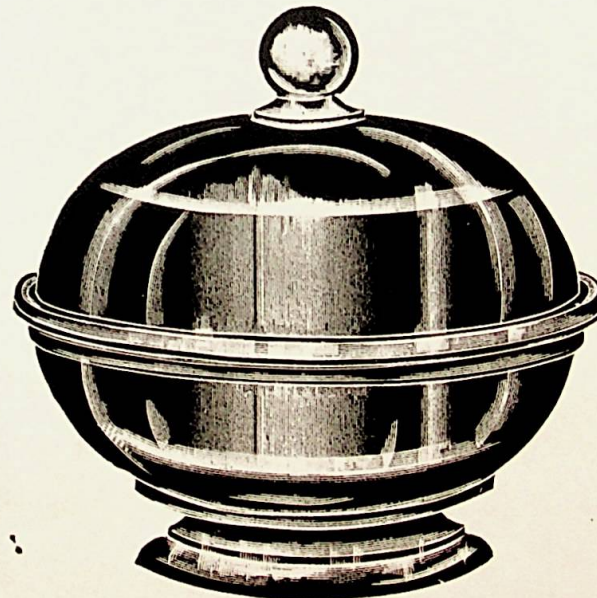
No. 408—7 in. Bowl and Cover.
Packed 1½ doz. in barrel.



No. 307—4½ in. Comport.
Packed 16 doz. in barrel.



No. 400—6 in. Comport and Cover.
Packed 7 doz. in barrel.

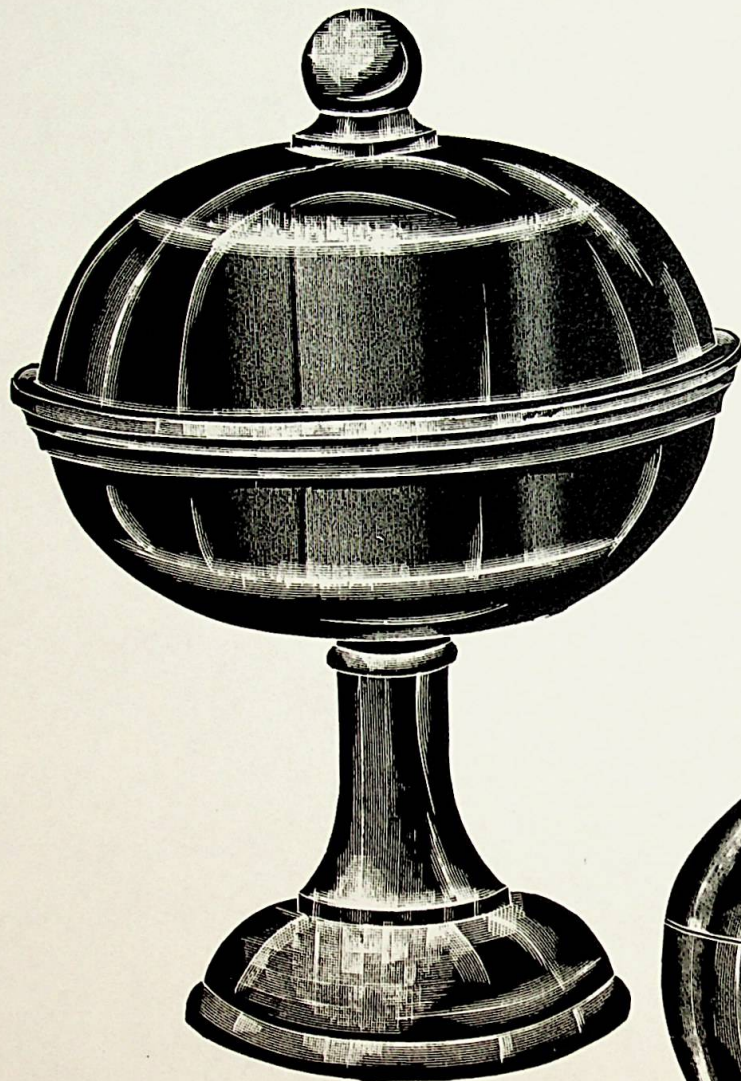


No. 316—8 in. Comport and Cover.
Packed 3 doz. in barrel.

QUANTITY PACKED IN A BARREL MAY VARY. SAME IS ESTIMATED AND NOT GUARANTEED.

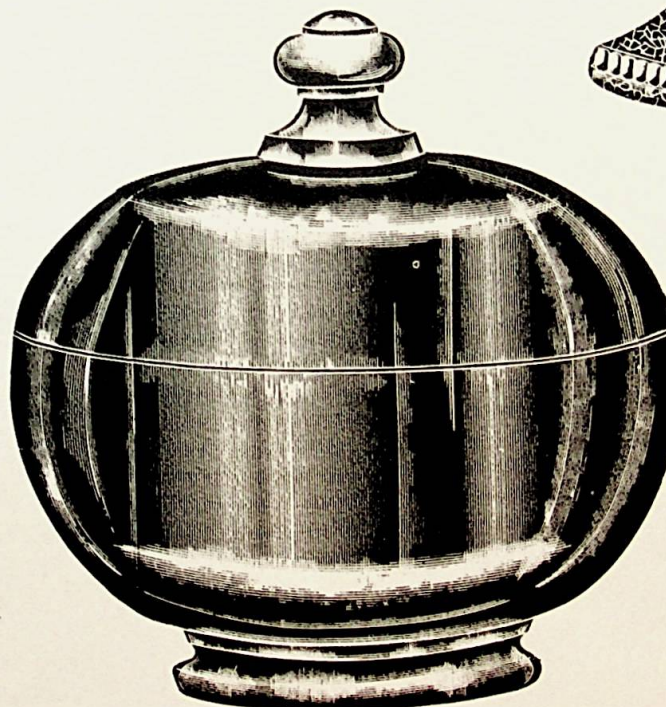
CANTON GLASS COMPANY, MARION, INDIANA.

SCALE HALF SIZE.

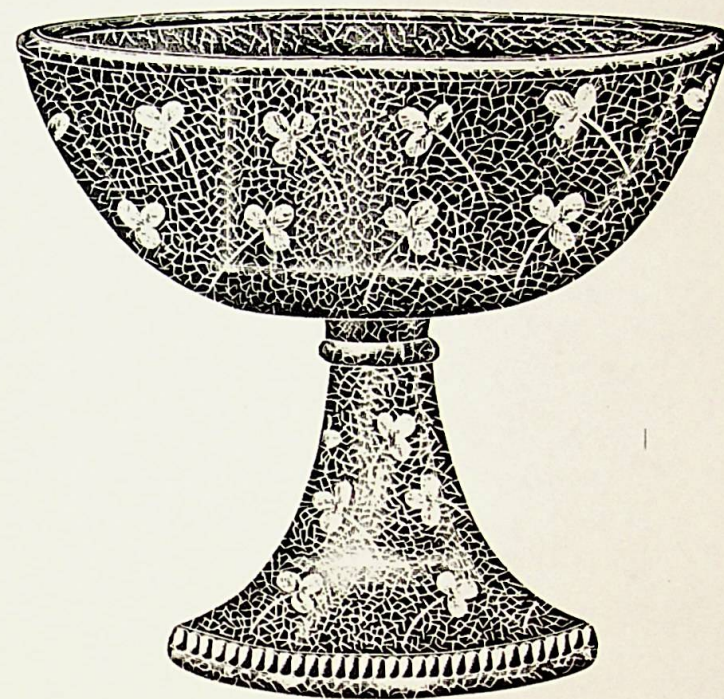


No. 314—6 in. Bowl and Cover.
Packed 2 doz. in barrel.

No. 315—8 in. Bowl and Cover.
Packed 1 doz. in barrel.



No. 402—8 in. Comport and Cover.
Packed 3 doz. in barrel.



No. 208—8 in. Bowl.
Packed 1½ doz. in barrel.

No. 208—8 in. Bowl and Cover.
Packed 1 doz. in barrel.

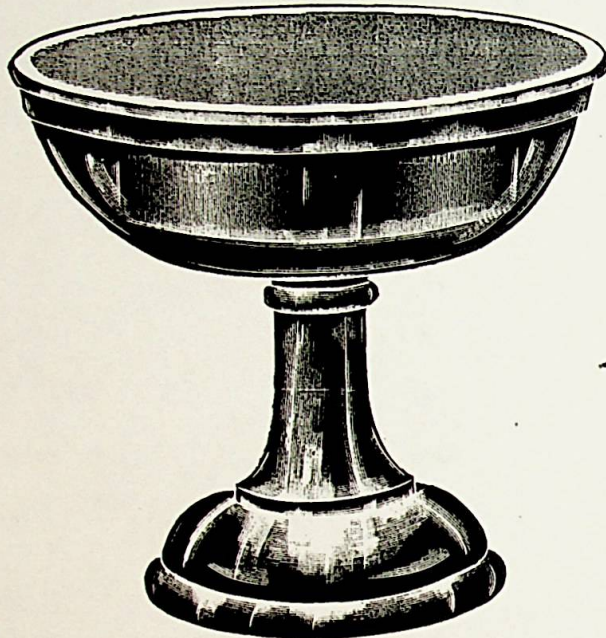
No. 208—7 in. Bowl.
Packed 2 doz. in barrel.

No. 208—7 in. Bowl and Cover.
Packed 1½ doz. in barrel.

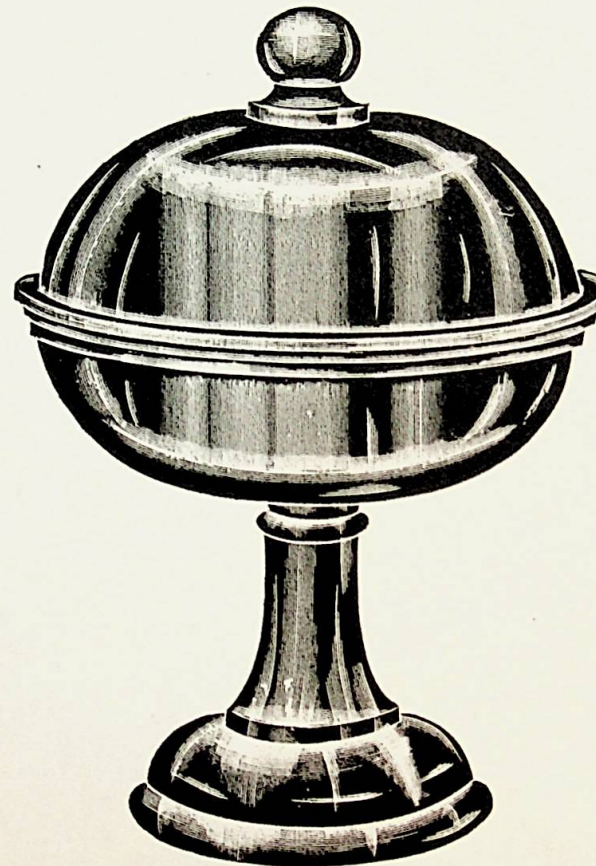
No. 208—6 in. Bowl.
Packed 2½ doz. in barrel.

No. 208—6 in. Bowl and Cover.
Packed 2 doz. in barrel.

QUANTITY PACKED IN A BARREL MAY VARY. SAME IS ESTIMATED AND NOT GUARANTEED.



No. 308—7 in. Bowl.
Packed 2 doz. in barrel.



No. 310—7 in. Bowl and Cover.
Packed 1½ doz. in barrel.



No. 1150—Grad. Cooking Cup.
With Tin Top.
Packed 18 doz. in barrel.



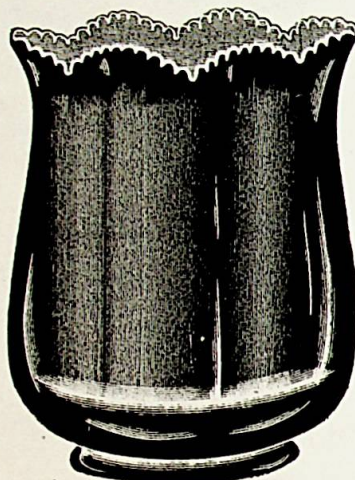
No. 212—Tooth Pick.
Packed 48 doz. in barrel.



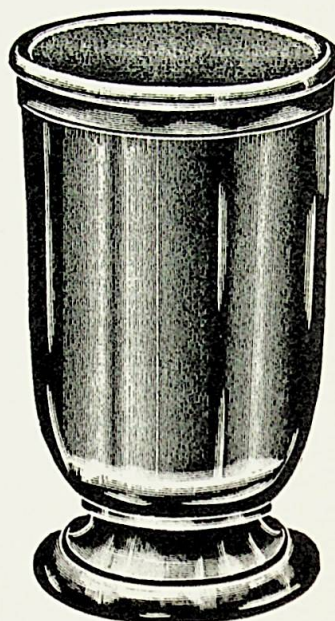
No. 410—Toothpick.
Packed 48 doz. in barrel.

CANTON GLASS COMPANY, MARION, INDIANA.

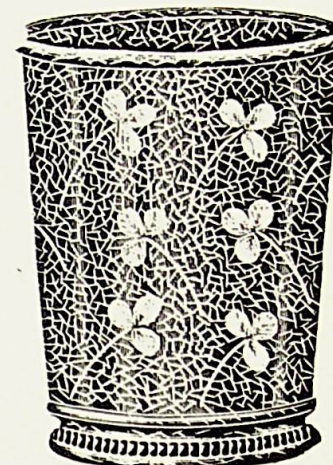
QUANTITY PACKED IN A BARREL MAY VARY. SAME IS ESTIMATED AND NOT GUARANTEED



No. 419—Tall Celery.
Packed 5 doz. in barrel.



No. 309—Tall Celery.
Packed 5 doz. in barrel.



No. 206—Celery.
Packed 5 doz. in barrel.



No. 406—Oil D. S.
Stuck Handle.
Packed 14 doz. in barrel.



No. 484—Oil D. S.
Pressed Handle.
Packed 18 doz. in barrel.



No. 480—Oil D. S.
Pressed Handle.
Packed 16 doz. in barrel.

QUANTITY PACKED IN A BARREL MAY VARY. SAME IS ESTIMATED AND NOT GUARANTEED.



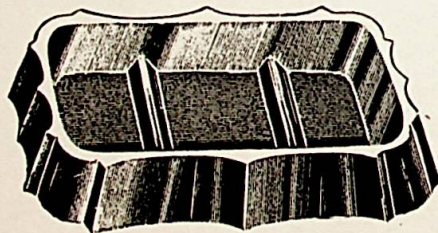
No. 50—Molasses Can, 15 oz.
Packed 7½ doz. in barrel.



No. 51—Molasses Can, 9 oz.
Packed 10 doz. in barrel.



No. 216—Molasses Can, 9 oz.
Packed 12 doz. in barrel.



No. 2000—Soap Slab.
Crystal, Opal or Turquoise Glass.
Packed 30 doz. in barrel.



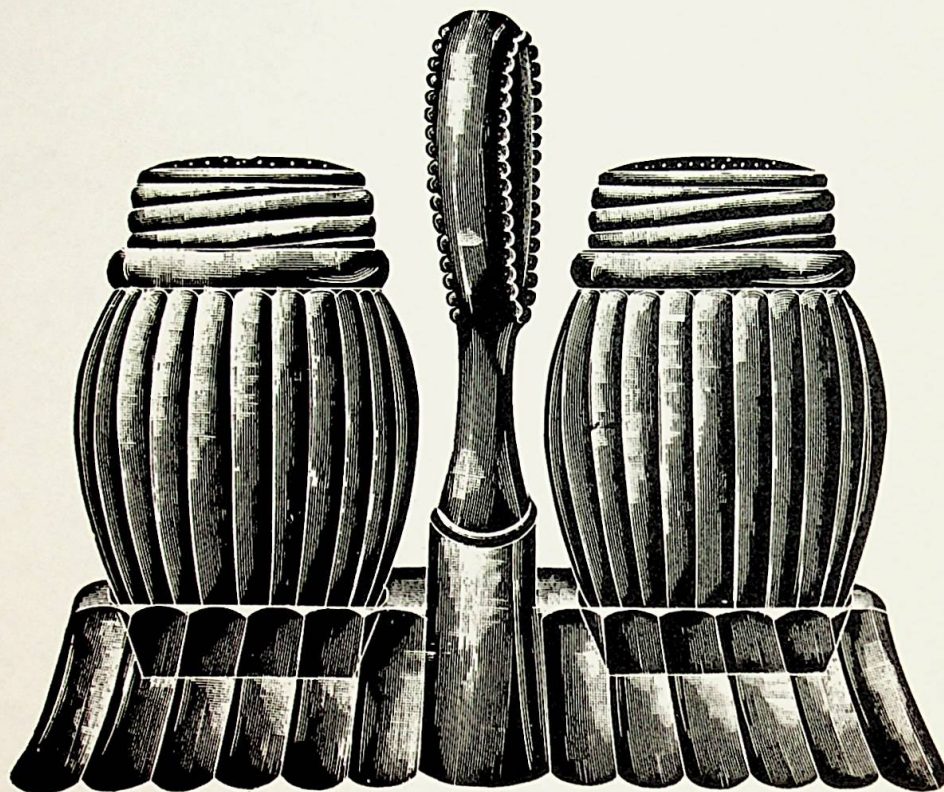
No. 52—Molasses Can, 9 oz.
Packed 12 doz. in barrel.



No. 53—Molasses Can, 20 oz.
Packed 6 doz. in barrel.

CANTON GLASS COMPANY, MARION, INDIANA.

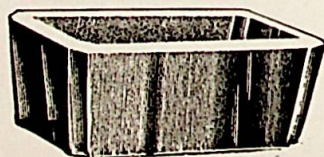
QUANTITY PACKED IN A BARREL MAY VARY. SAME IS ESTIMATED AND NOT GUARANTEED.



No. 1133—Salt and Pepper Castor. Full Scale.

Nickel Top.

Packed 6 doz. in barrel.



No. 1132—Square Table Salt.

Packed 60 doz. in barrel.



No. 1131—Square Ind. Salt.

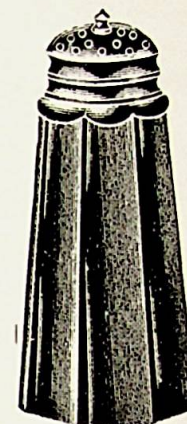
Packed 120 doz. in barrel.



No. 1134—Salt and Pepper Shaker.

Nickel Top.

Packed 48 doz. in barrel.



No. 1135—Salt and Pepper Shaker.

Heavy Nickel Top.

Packed 48 doz. in barrel.



No. 2001—Nest Egg.

Packed 100 doz. in barrel. Opal Glass.



No. 1130—Shaker Salt.

Nickel Top.

Packed 48 doz. in barrel.



No. 1136—Salt and Pepper Shaker.

Nickel Top.

Packed 60 doz. in barrel.

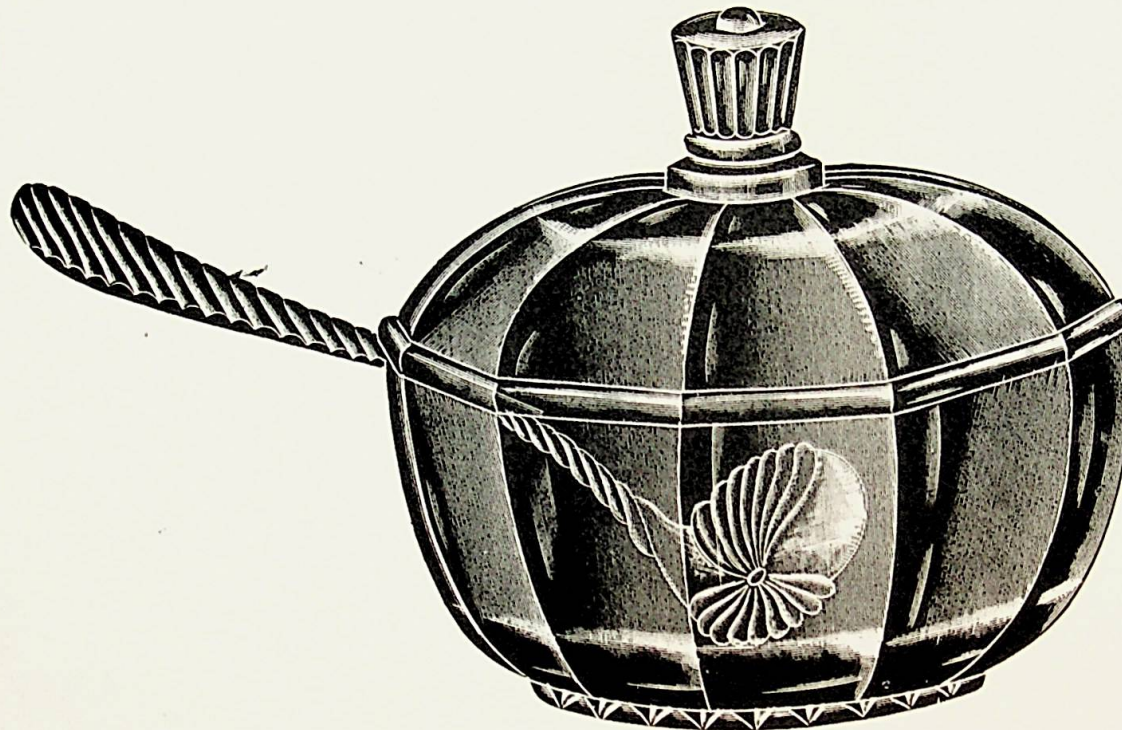
QUANTITY PACKED IN A BARREL MAY VARY. SAME IS ESTIMATED AND NOT GUARANTEED.



No. 209—Custard, $4\frac{1}{2}$ oz.
Pressed Handle.
Packed 30 doz. in barrel.



No. 413—Custard, 5 oz.
Stuck Handle.
Packed 30 doz. in barrel.



No. 1126—9 in. Crushed Fruit Bowl.
Packed $1\frac{1}{2}$ doz. in barrel.

SCALE FULL SIZE.



No. 81—Custard, 5 oz.
Stuck or Pressed Handle.
Packed 30 doz. in barrel.



No. 840—Sherbet, 5 oz., Flat Foot.
Packed 20 doz. in barrel.
No. 840 is also made in $2\frac{3}{4}$ oz.
Packed 40 doz. in barrel.



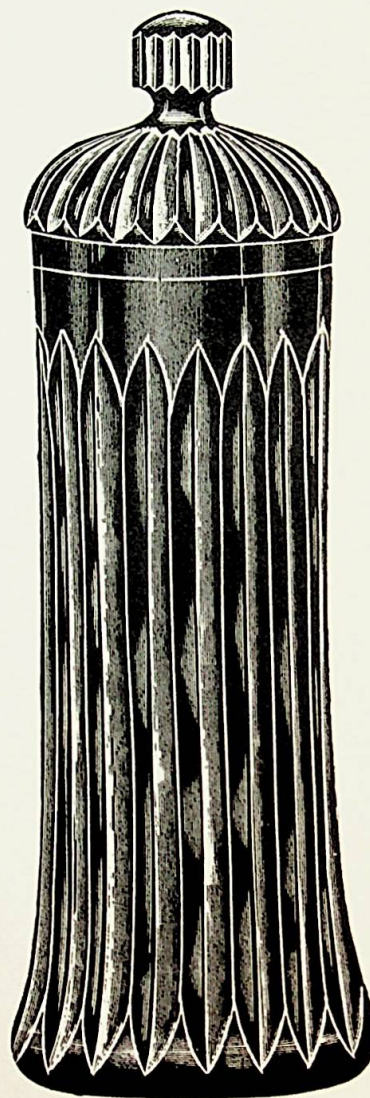
No. 80—Large Custard, 5 oz.
Pressed Handle.
Packed 30 doz. in barrel.

QUANTITY PACKED IN A BARREL MAY VARY. SAME IS ESTIMATED AND NOT GUARANTEED.

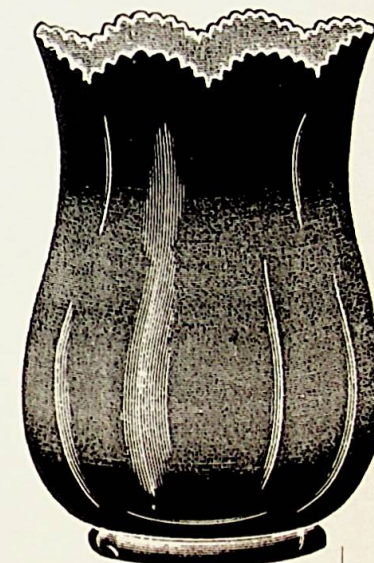
CANTON GLASS COMPANY, MARION, INDIANA.



No. 82—Soda Spoon Holder.
Packed 5 doz. in barrel.

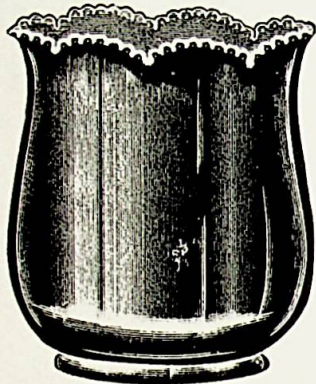


No. 83—Soda Straw Jar and Cover.
Packed 3 doz. in barrel.



No. 84—Soda Spoon Holder.
Packed 4 doz. in barrel.

QUANTITY PACKED IN A BARREL MAY VARY. SAME IS ESTIMATED AND NOT GUARANTEED.



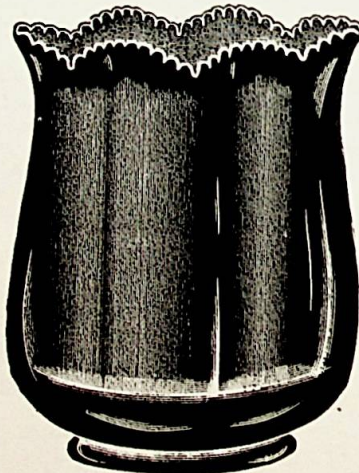
No. 85—Soda Spoon Holder.
Packed 9 doz. in barrel.



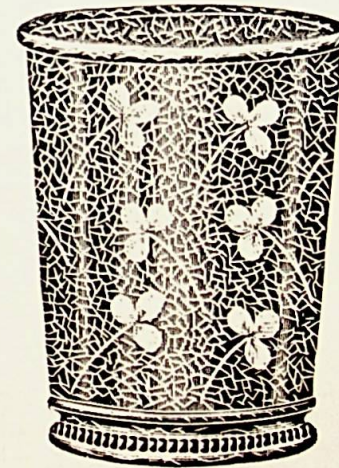
No. 86—Soda Spoon Holder.
Packed 10 doz. in barrel.



No. 87—Soda Spoon Holder.
Packed 9 doz. in barrel.



No. 88—Soda Spoon Holder.
Packed 5 doz. in barrel.



No. 89—Soda Spoon Holder.
Packed 5 doz. in barrel.

HOFFMAN HOUSE GOBLETS.

SCALE HALF SIZE.



No. 900— $\frac{3}{4}$ oz. Cordial.
Packed 100 doz. in barrel.



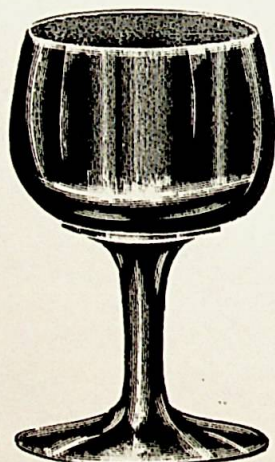
No. 901—2 oz. Small Wine.
Packed 48 doz. in barrel.



No. 902—3 oz. Large Wine.
Packed 36 doz. in barrel.



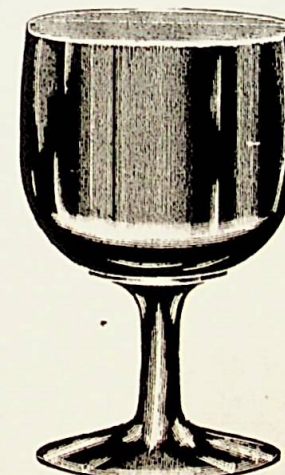
No. 903— $4\frac{1}{2}$ oz. Claret.
Packed 24 doz. in barrel.



No. 904—6 oz. Champagne.
Packed 18 doz. in barrel.



No. 905—8 oz. Goblet.
Packed 12 doz. in barrel.



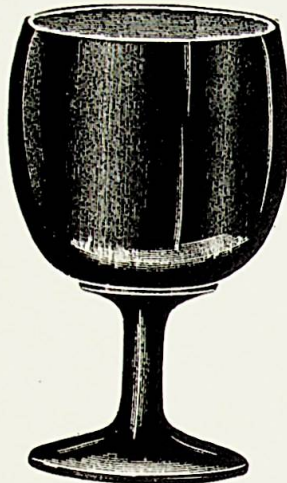
No. 906—10 oz. Goblet.
Packed 10 doz. in barrel.

CANTON GLASS COMPANY, MARION, INDIANA.

QUANTITY PACKED IN A BARREL MAY VARY. SAME IS ESTIMATED AND NOT GUARANTEED.

HOFFMAN HOUSE GOBLETS. Continued.
SCALE HALF SIZE.

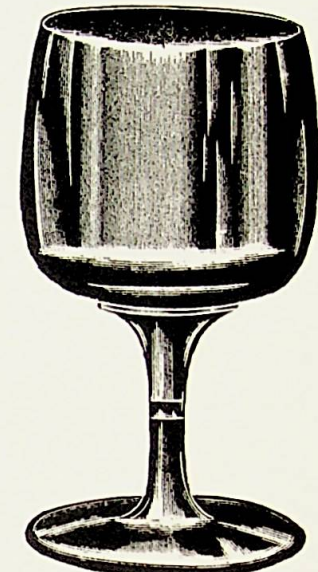
27



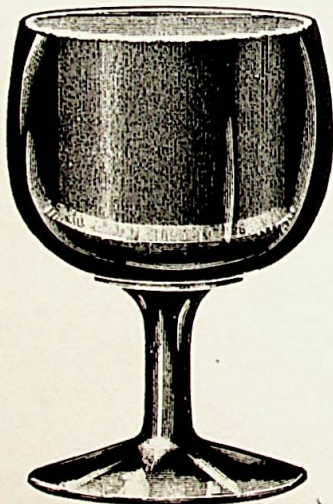
No. 907—11 oz. Goblet.
Packed 9 doz. in barrel.



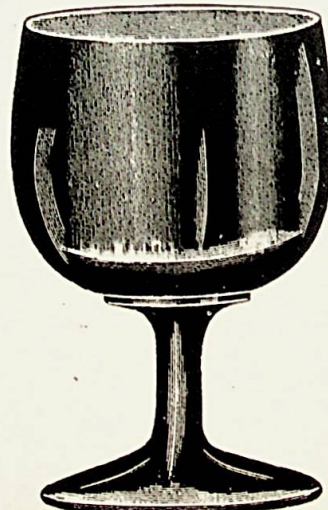
No. 908—12 oz. Goblet.
Packed 8 doz. in barrel.



No. 909—13 oz. Goblet.
Packed 7 doz. in barrel.



No. 910—14 oz. Goblet.
Packed 7 doz. in barrel.



No. 911—15 oz. Goblet.
Packed 6 doz. in barrel.



No. 912—16 oz. Goblet.
Packed 6 doz. in barrel.



No. 913—17 oz. Goblet.
Packed 6 doz. in barrel.

QUANTITY PACKED IN A BARREL MAY VARY. SAME IS ESTIMATED AND NOT GUARANTEED.

CANTON GLASS COMPANY, MARION, INDIANA.

SCALE HALF SIZE



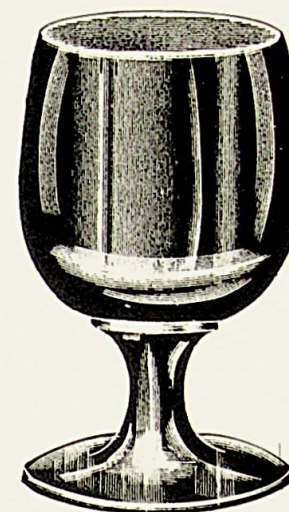
No. 204—Goblet, 8 oz.
Packed 12 doz. in barrel.



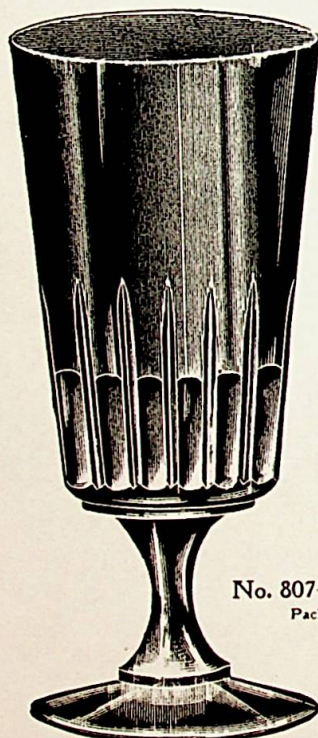
No. 836—Goblet, 10 oz.
Packed 10 doz. in barrel.



No. 409—Goblet, 10 oz.
Packed 10 doz. in barrel.



No. 810—Heavy Flat Foot
Goblet, 12 oz.
Packed 8 doz. in barrel.



No. 807—Weiss Beer, 17 oz.
Packed 4 doz. in barrel.



No. 808—Weiss Beer, 15 oz.
Packed 6 doz. in barrel.

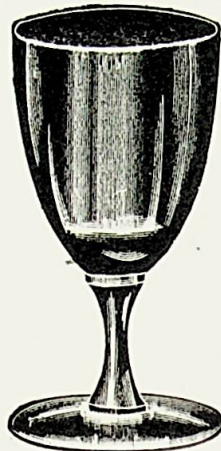


No. 809—Weiss Beer, 14 oz.
Packed 8 doz. in barrel.

QUANTITY PACKED IN A BARREL MAY VARY. SAME IS ESTIMATED AND NOT GUARANTEED.



No. 835—7 oz. Champagne.
Packed 16 doz. in barrel.



No. 834—3¼ oz. Claret.
Packed 48 doz. in barrel.



No. 833—3 oz. Wine.
Packed 48 doz. in barrel.



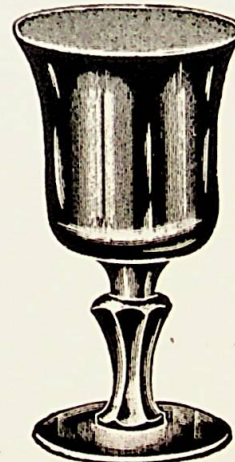
No. 210 Wine—2½ oz.
Packed 40 doz. in barrel.



No. 313 Wine—2½ oz.
Packed 40 doz. in barrel.



No. 416—Wine.
Packed 40 doz. in barrel.

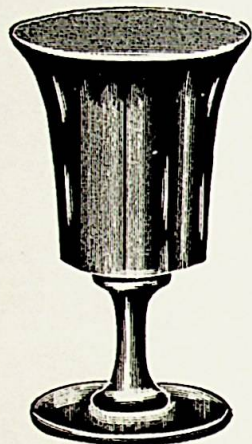


No. 846—Hot Whiskey, 4 oz.
Packed 18 doz. in barrel.

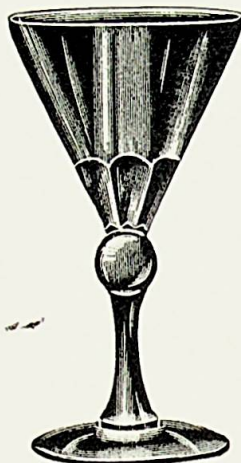


No. 842—Rhine Wine, 4½ oz.
Packed 18 doz. in barrel.

CANTON GLASS COMPANY, MARION, INDIANA.



No. 843—Hot Whiskey.
4 oz.
Packed 18 doz. in barrel.



No. 848—Cocktail or Sherry.
2¼ oz.
Packed 24 doz. in barrel.



No. 844—Cocktail.
4 oz.
Packed 18 doz. in barrel.



No. 849—Hot Whiskey.
3¼ oz.
Packed 18 doz. in barrel.



No. 847—Cocktail.
3 oz. Straight or Flared.
Packed 18 doz. in barrel.



No. 852—Cocktail.
4¼ oz.
Packed 18 doz. in barrel.



No. 845—Cocktail.
3 oz. Straight or Flared.
Packed 18 doz. in barrel.

QUANTITY PACKED IN A BARREL MAY VARY. SAME IS ESTIMATED AND NOT GUARANTEED.



No. 851—Cocktail.
4 oz.
Packed 18 doz. in barrel.



No. 841—Cocktail.
3 oz. Flared or Straight.
Packed 18 doz. in barrel.

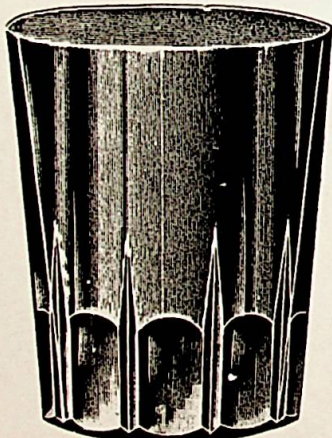


No. 850—Cocktail.
4 1/2 oz.
Packed 18 doz. in barrel.



No. 832—1 oz. Cordial.
Packed 100 doz. in barrel.

SCALE FULL SIZE



No. 871—2 oz. Whiskey.
Packed 100 doz. in barrel.



No. 872—2 1/2 oz. Whiskey.
Packed 100 doz. in barrel.



No. 873—2 oz. Whiskey.
Packed 100 doz. in barrel.



No. 874—1 1/2 oz. Whiskey.
Packed 100 doz. in barrel.

QUANTITY PACKED IN A BARREL MAY VARY. SAME IS ESTIMATED AND NOT GUARANTEED.

CANTON GLASS COMPANY, MARION, INDIANA.



No. 863	—	5 oz.	St. Louis Beer.	Packed 22 doz. in	barrel.
No. 864	—	8 "	" " "	" 15	"
No. 865	—	10 "	" " "	" 12	"
No. 866	—	12 "	" " "	" 10	"
No. 865½	—	14 "	" " "	" 7	"
No. 856½	—	16 "	" " "	" 6	"



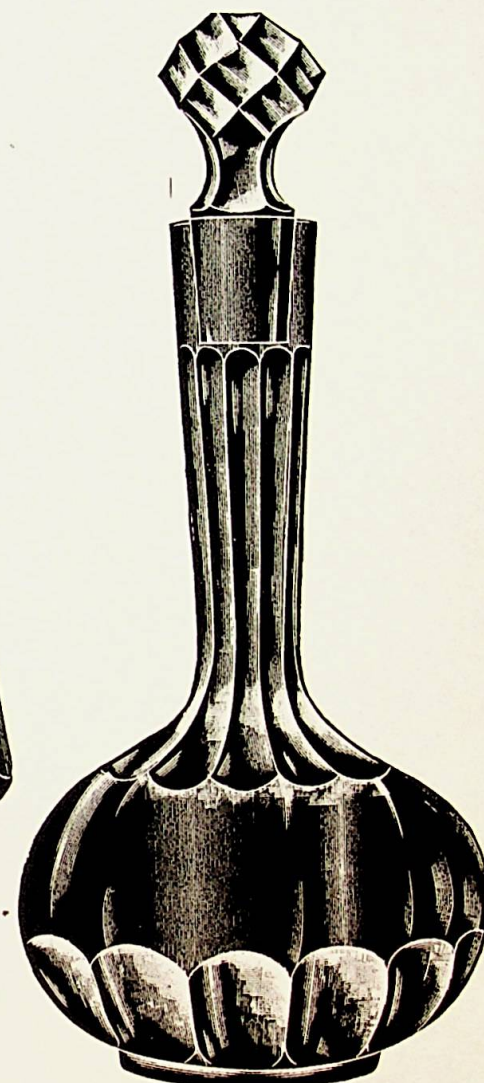
No. 867	—	5 oz.	Plain Handled Beer.	Packed 22 doz in	bbbl.
No. 868	—	8 "	" " "	" 15	"
No. 869	—	10 "	" " "	" 12	"
No. 870	—	12 "	" " "	" 10	"
No. 869½	—	13 "	" " "	" 8	"
No. 870½	—	14 "	" " "	" 7	"



No. 1106—12 oz. Bitter.
Packed 8 doz. in barrel.



No. 1105—Grant Bar Bottle.
Drop or Ground Stopper.
Packed 3½ doz. in barrel.

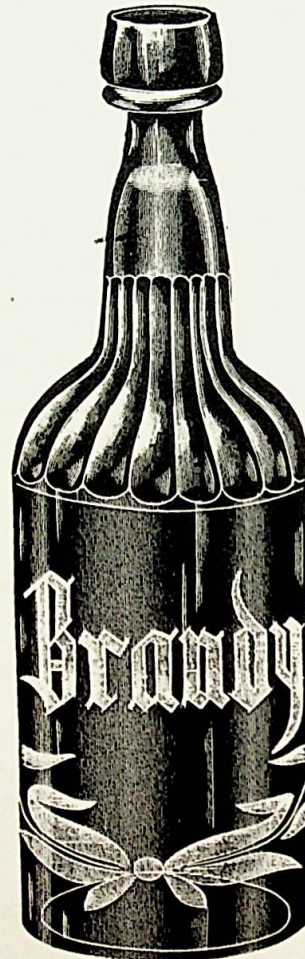


No. 1104—Decanter, 5 to a Gallon.
Drop or Ground Stopper.
Packed 3 doz. in a barrel.

QUANTITY PACKED IN A BARREL MAY VARY. SAME IS ESTIMATED AND NOT GUARANTEED.



No. 1100—Flute Top Bar Bottle.
Plain Neck.
Packed 3½ doz. in barrel.



No. 1101—Flute Top Bar Bottle.
Choke Neck.
Packed 3½ doz. in barrel.



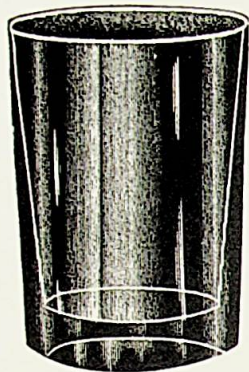
No. 1102—Bar Bottle.
Plain Neck.
Packed 3½ doz. in barrel.



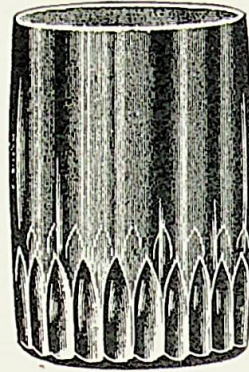
No. 1103—Bar Bottle.
Choke Neck.
Packed 3½ doz. in barrel.

CANTON GLASS COMPANY, MARION, INDIANA.

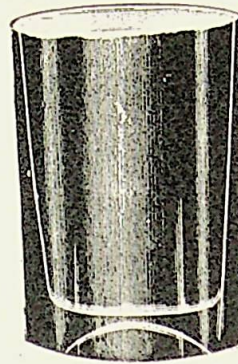
QUANTITY PACKED IN A BARREL MAY VARY. SAME IS ESTIMATED AND NOT GUARANTEED.



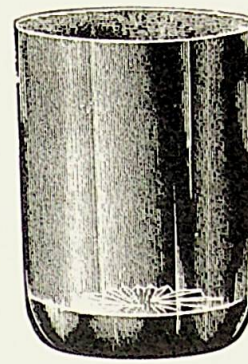
No. 862—9 oz. Table Tumbler.
Packed 18 doz. in barrel.



No. 858—9 oz. Table Tumbler.
Packed 18 doz. in barrel.



No. 875—9 oz. Table Tumbler.
Packed 18 doz. in barrel.

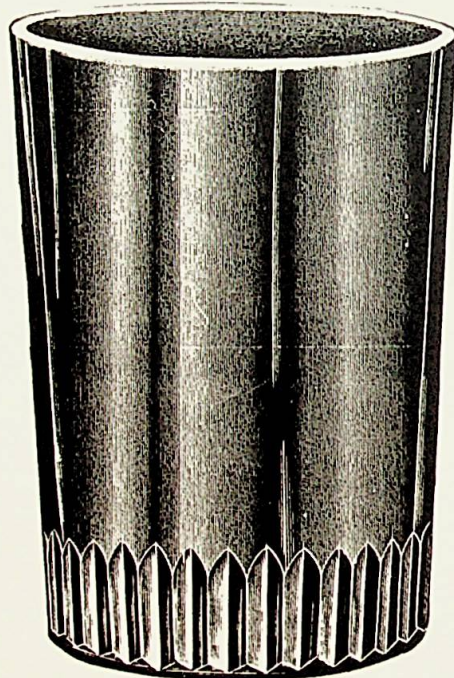


No. 860—8 oz. Table Tumbler.
Packed 18 doz. in barrel.

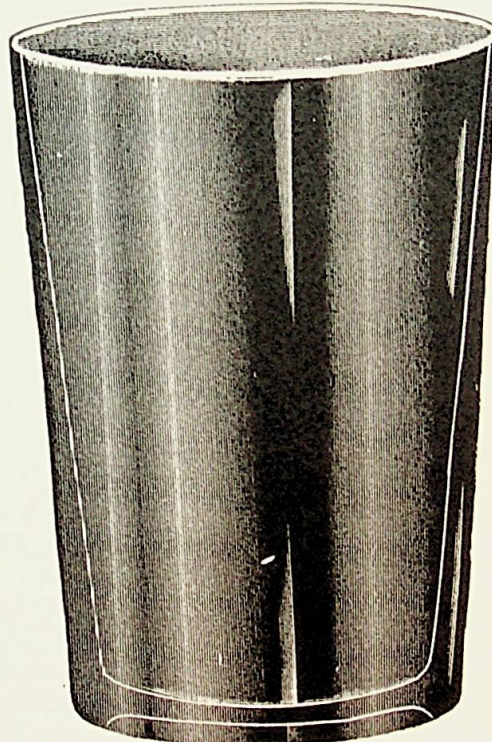


No. 879—6 oz. Table Tumbler.
Packed 24 doz. in barrel.

SCALE FULL SIZE.



No. 853—8 oz. Common Tumbler.
Packed 20 doz. in barrel.



No. 854—9 oz. Common Tumbler.
Packed 20 doz. in barrel.

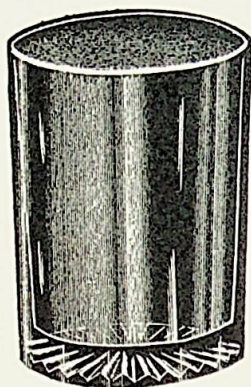


No. 855—9 oz. Table Tumbler.
Packed 20 doz. in barrel.

QUANTITY PACKED IN A BARREL MAY VARY. SAME IS ESTIMATED AND NOT GUARANTEED.



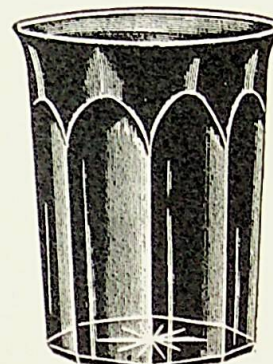
No. 861—7 1/2 oz. Common
Tumbler.
Packed 21 doz. in barrel.



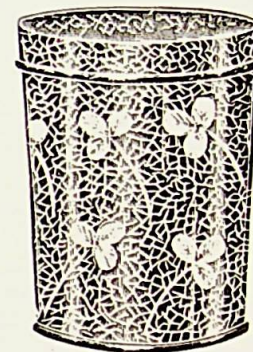
No. 859—9 oz. Table Tumbler.
Packed 18 doz. in barrel.



No. 876—10 oz. Table Tumbler.
Packed 17 doz. in barrel.



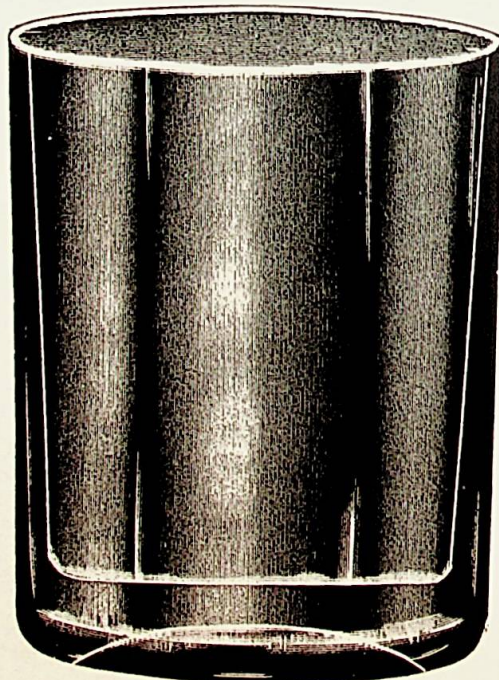
No. 878—8 oz. Fluted Table
Tumbler.
Packed 20 doz. in barrel.



No. 214—8 oz. Table Tumbler.
Packed 20 doz. in barrel.

SCALE FULL SIZE.

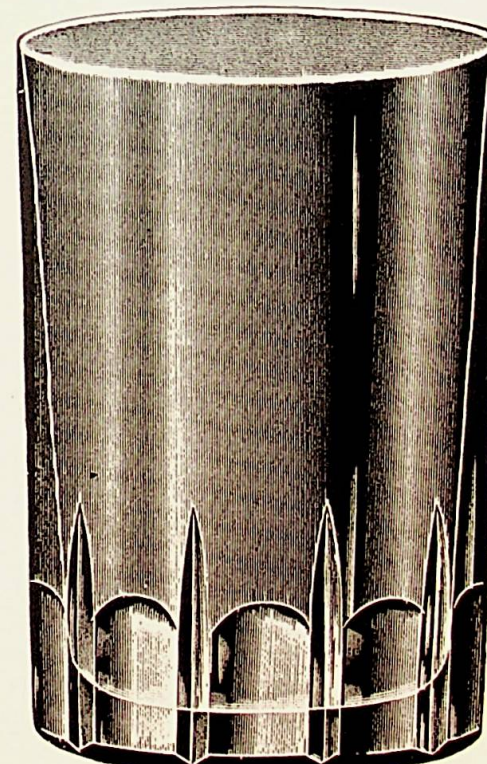
All our Common Tumblers are made from same
grade of material as our table tumblers—
best Pot Flint Glass.



No. 877—8 oz. Table Tumbler.
Packed 19 doz. in barrel.



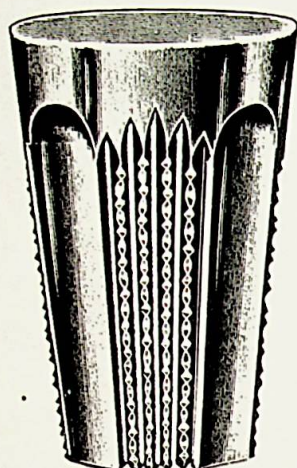
No. 856—8 oz. Common Tumbler.
Packed 20 doz. in barrel.



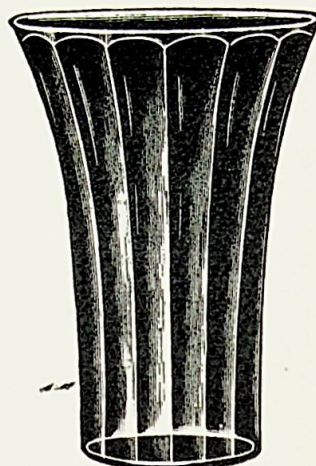
No. 857—9 oz. Table Tumbler.
Packed 18 doz. in barrel.

QUANTITY PACKED IN A BARREL MAY VARY. SAME IS ESTIMATED AND NOT GUARANTEED.

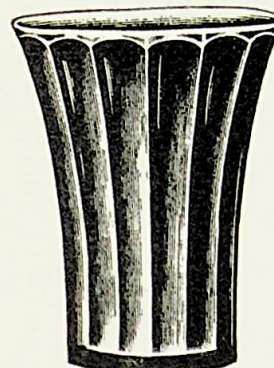
SCALE HALF SIZE.



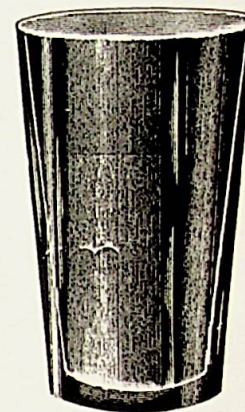
No. 824—10 oz. Ice Tea.
Packed 18 doz. in barrel.



No. 825—12 oz. Fluted Bell Soda
Also furnished with Pressed Handle.
Packed 12 doz. in barrel.

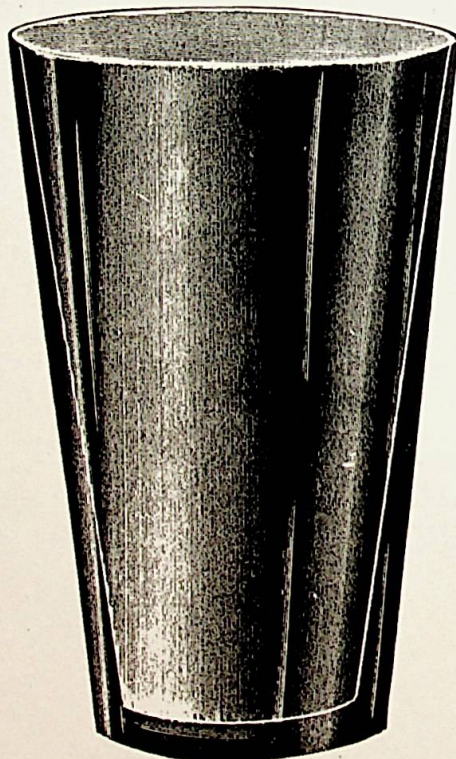


No. 826—8 oz. Fluted Bell Soda.
Also furnished with Pressed Handle.
Packed 20 doz. in barrel.

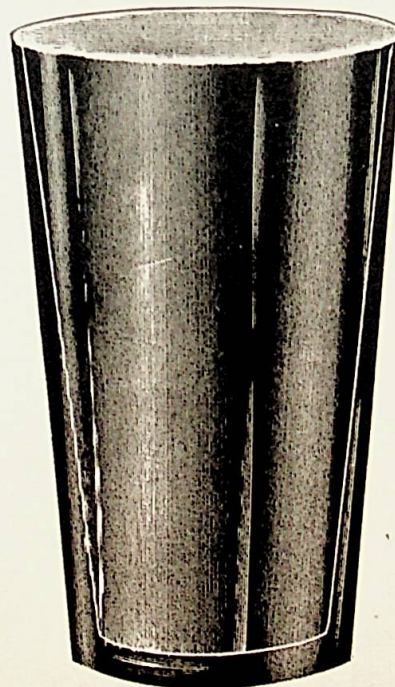


No. 827—9 oz. Pressed Soda.
Packed 20 doz. in barrel.

SCALE FULL SIZE.



No. 828—6 oz. Pressed Soda.
Packed 30 doz. in barrel.



No. 799—4 oz. Pressed Ale.
Special Flared. Packed 40 doz. in barrel.

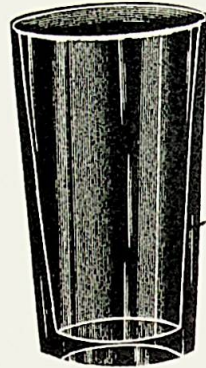


No. 798—3½ oz. Pressed Ale.
Special Flared. Packed 50 doz. in barrel.

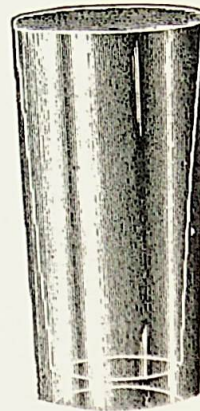
QUANTITY PACKED IN A BARREL MAY VARY. SAME IS
ESTIMATED AND NOT GUARANTEED.



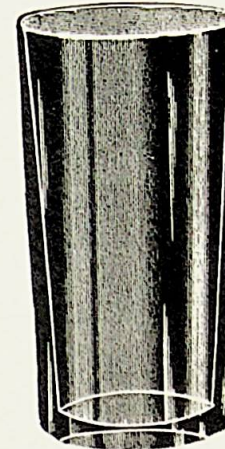
No. 800—4 oz. Pressed Ale.
Packed 36 doz. in barrel.



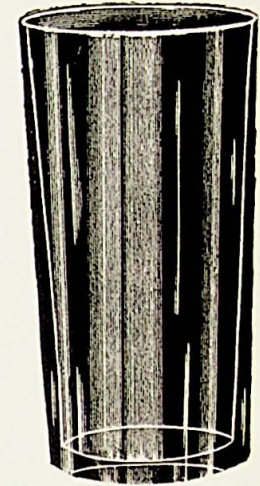
No. 801—6 oz. Pressed Ale.
Packed 30 doz. in barrel.



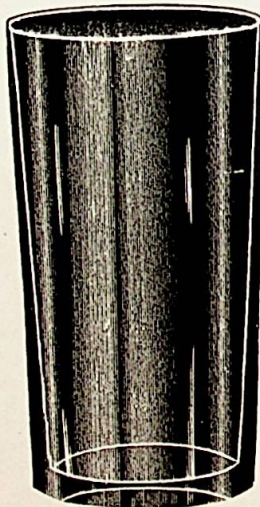
No. 802—8 oz. Pressed Ale.
Packed 24 doz. in barrel.



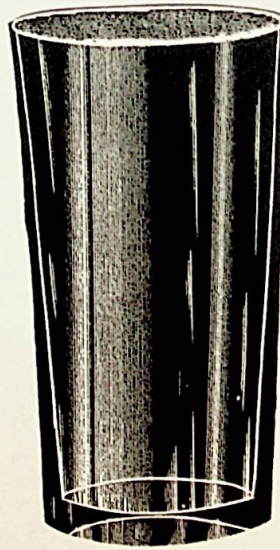
No. 803—10 oz. Pressed Ale.
Packed 20 doz. in barrel.



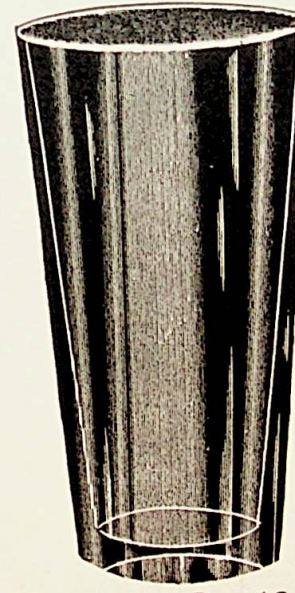
No. 804—12 oz. Pressed Ale.
Packed 12 doz. in barrel.



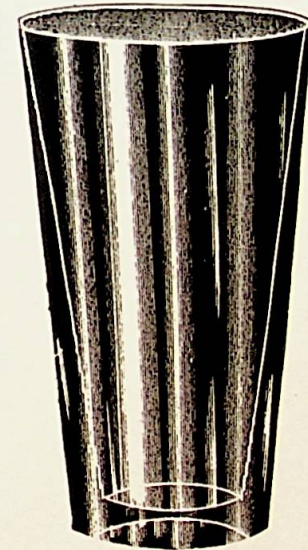
No. 805—14 oz. Pressed Ale.
Packed 9 doz. in barrel.



No. 806—16 oz. Pressed Ale.
Packed 8 doz. in barrel.

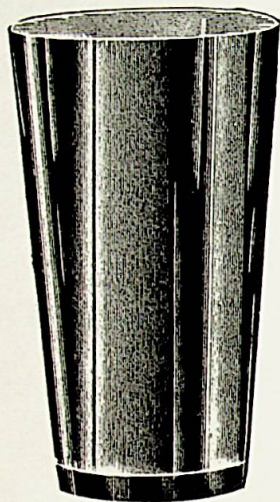


No. 811—16 oz. Pressed Soda.
Packed 12 doz. in barrel.

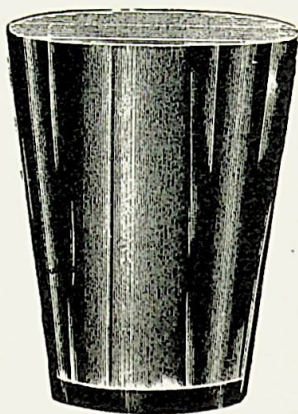


No. 812—15½ oz. Pressed Soda.
Sham Sides.
Packed 12 doz. in barrel.

QUANTITY PACKED IN A BARREL MAY VARY. SAME IS ESTIMATED AND NOT GUARANTEED.



No. 813—12 oz. Pressed Soda.
Packed 16 doz. in barrel.



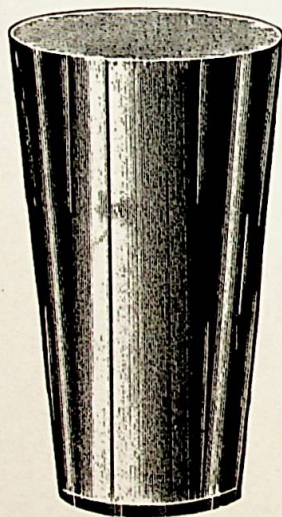
No. 814—11 oz. Pressed Soda.
Packed 16 doz. in barrel.



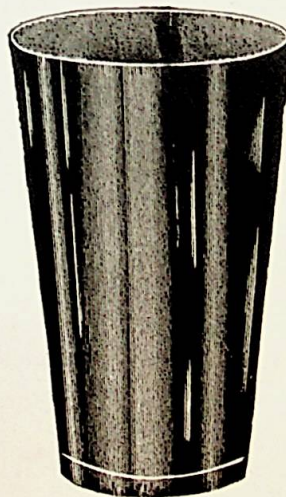
No. 815—12 oz. World's Fair
Pressed Soda.
Packed 16 doz. in barrel.



No. 816—12 oz. Pressed Soda.
Packed 16 doz. in barrel.



No. 817—13 oz. Pressed Soda.
Packed 16 doz. in barrel.



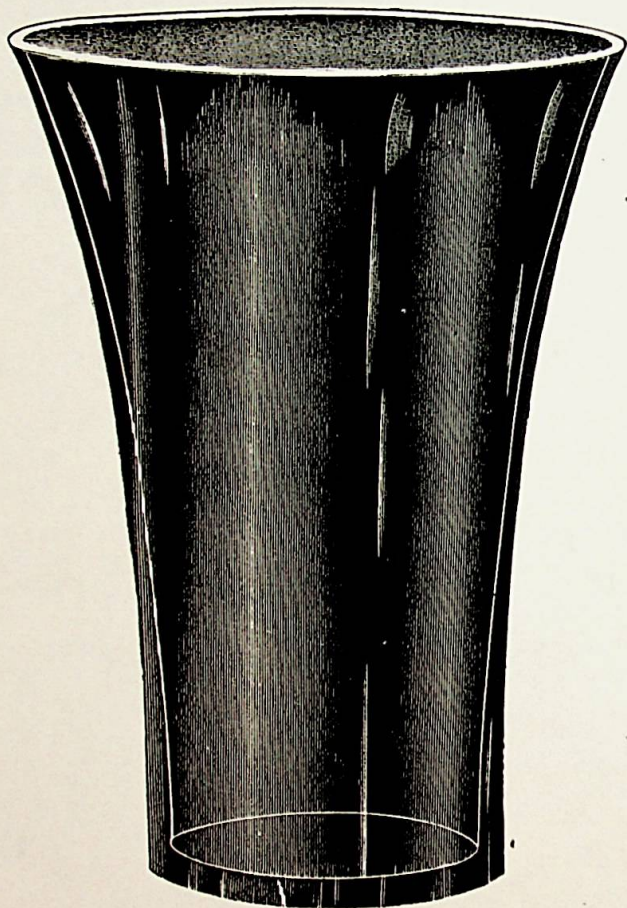
No. 818—13 oz. Pressed Soda.
Packed 16 doz. in barrel.



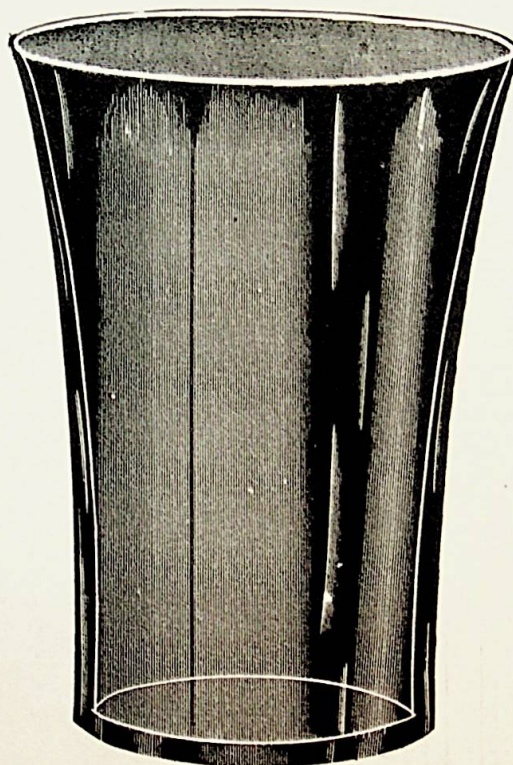
No. 819—12 oz. Pressed Soda.
Packed 16 doz. in barrel.

QUANTITY PACKED IN A BARREL MAY VARY. SAME IS ESTIMATED AND NOT GUARANTEED.

SCALE FULL SIZE.



No. 823—12 oz. Pressed Bell Soda.
Packed 12 doz. in barrel.



No. 822—8 oz. Pressed Bell Soda.
Packed 20 doz. in barrel.

SCALE HALF SIZE.



No. 820—8 oz. Pressed Bell Soda.
Pressed Handle.
Packed 18 doz. in barrel.

No. 821—12 oz. Pressed Bell Soda.
Pressed Handle.
Packed 12 doz. in barrel.

CANTON GLASS COMPANY, MARION, INDIANA.

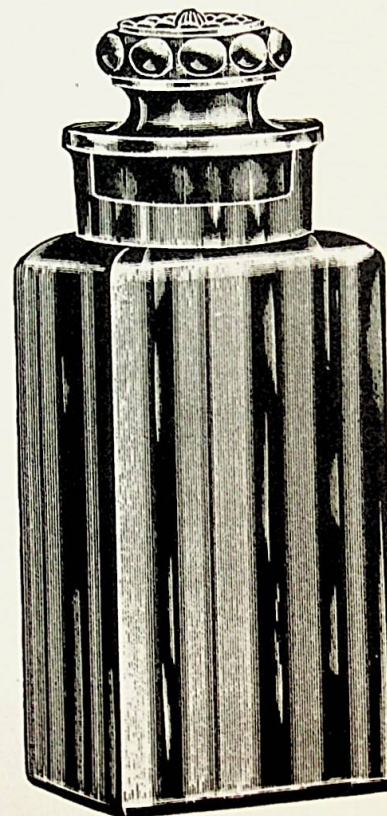
QUANTITY PACKED IN A BARREL MAY VARY. SAME IS ESTIMATED AND NOT GUARANTEED.

CANTON GLASS COMPANY, MARION, INDIANA.

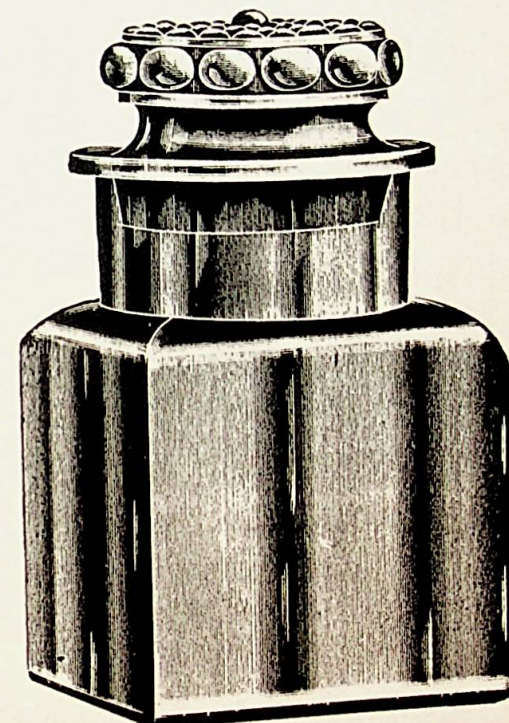


No. 1163—Paris Jar, 4 Pound, Square.
Drop or Ground Stopper, Salt Mouth.
Packed 1½ doz. in barrel.

No. 1163½—Paris Jar, 5 Pound, Square.
Drop or Ground Stopper, Salt Mouth.
Packed 1½ doz. in barrel.

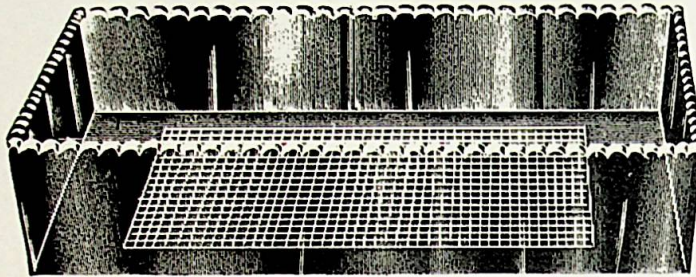


No. 1162—Paris Jar, 2 Pound.
Drop or Ground Stopper.
Packed 3 doz. in barrel.

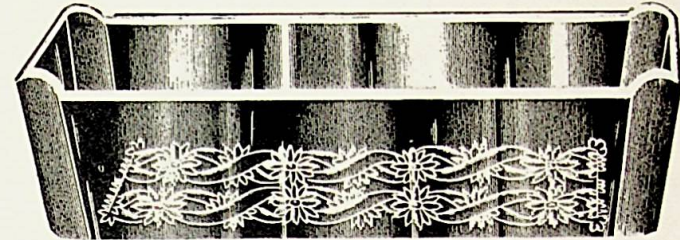


No. 1161—Squat Jar, 2 Pound.
Drop or Ground Stopper.
Packed 2½ doz. in barrel.

QUANTITY PACKED IN A BARREL MAY VARY. SAME IS ESTIMATED AND NOT GUARANTEED.



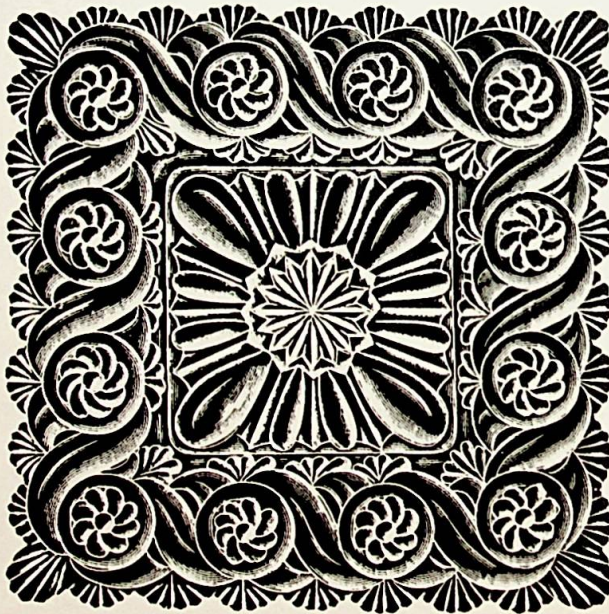
No. 1164—8 in. Candy Tray.
Packed 4 doz. in barrel. Crystal or Opal.



No. 1165—7 in. Candy Tray.
Packed 7 doz. in barrel. Crystal or Opal.

No. 1166—8 in. Candy Tray.
Packed 5 doz. in barrel. Crystal or Opal.

No. 1167—9 in. Candy Tray.
Packed 4 doz. in barrel. Crystal or Opal.

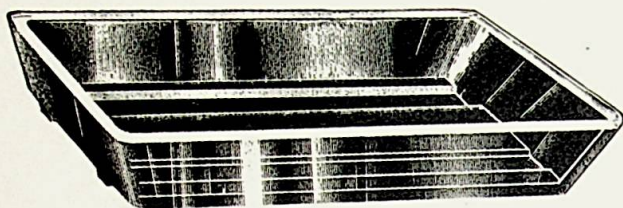


No. 1168—Square Candy Plate, Crystal.
Packed 13 doz. in barrel.



No. 1169—48 oz. Caddy and Bail.
Glass Cap. Metal Screw Ring.
Packed 2½ doz. in barrel.

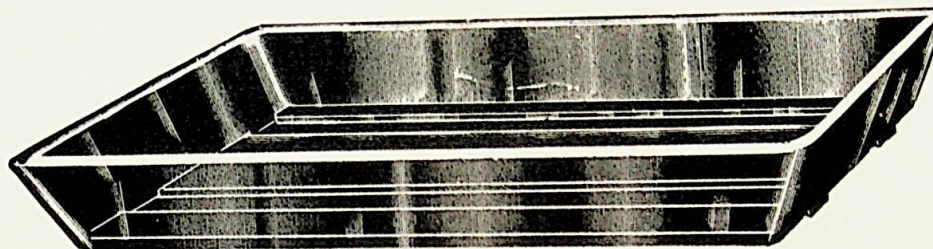
QUANTITY PACKED IN A BARREL MAY VARY. SAME IS ESTIMATED AND NOT GUARANTEED.



No. 2200—Photo Trays.

4 1/4 x 5 1/4.

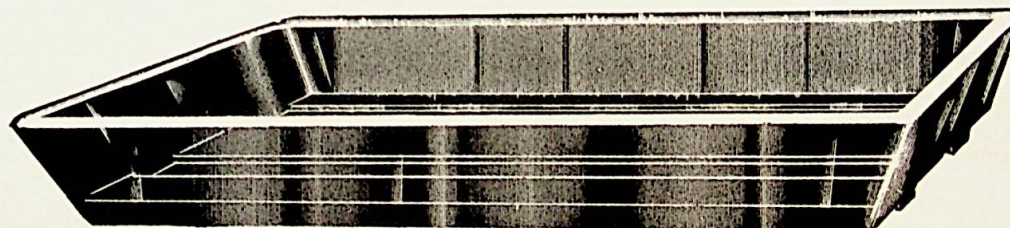
Packed 11 doz. in a barrel.



No. 2201—Photo Trays.

5 1/4 x 8 1/4.

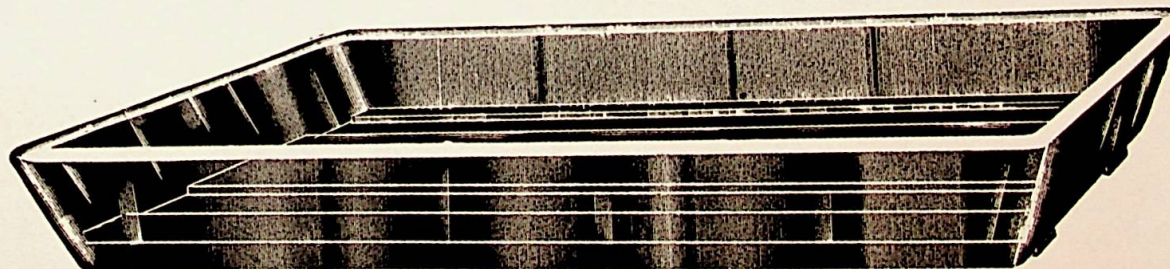
Packed 6 doz. in a barrel.



No. 2202—Photo Trays.

7 x 9.

Packed 4 doz. in a barrel.



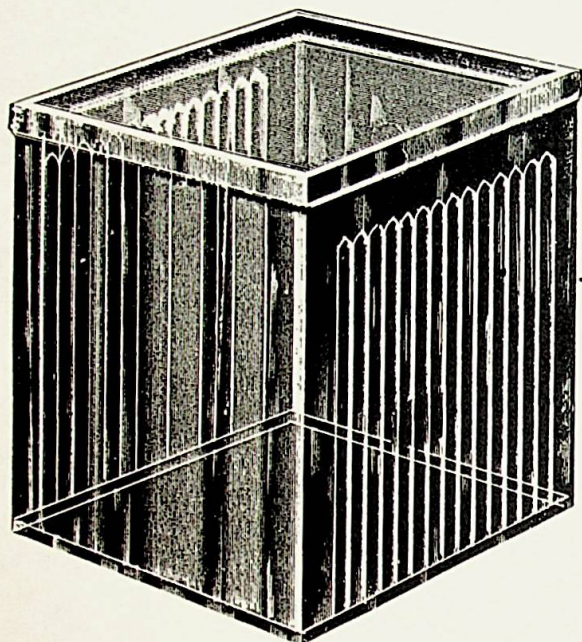
No. 2203—Photo Trays.

8 1/4 x 10 1/4.

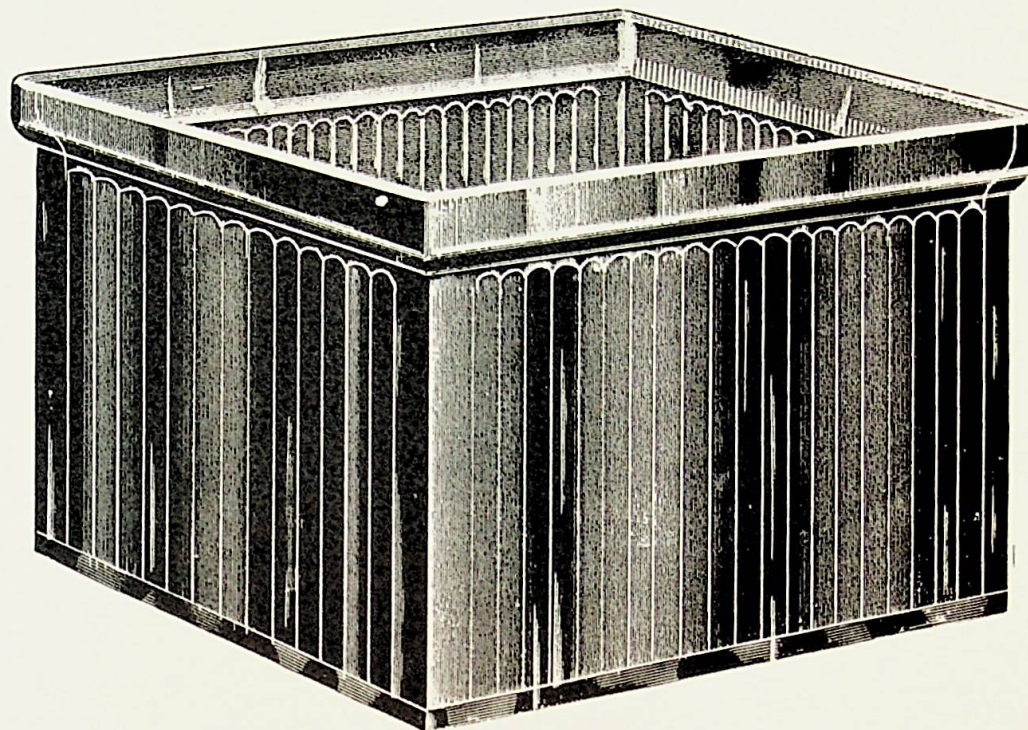
Packed 2 1/2 doz. in a barrel.

ABOVE TRAYS ARE MADE IN AMBER, GREEN AND CRYSTAL.

QUANTITY PACKED IN A BARREL MAY VARY. SAME IS ESTIMATED AND NOT GUARANTEED.



No. 1—Fixing Bath, 4x5.
Amber, Green or Crystal.
Packed 2 doz. in barrel.



No. 2—Fixing Bath, 5x7.
Amber, Green or Crystal.
Packed 1 doz. in barrel.



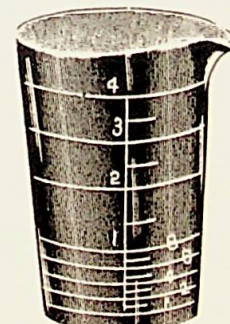
No. 2013—Small Medicine.
Finished Edge, Pressed Lines and
Figures Showing Tea, Dessert
and Table Spoons. Also fur-
nished with unfinished edge.



No. 2014—Large Medicine.
Finished Edge. Pressed Lines and
Figures Showing 8 Tea and 2
Tablespoons. Also furnished
with unfinished edge.



No. 2016—Measuring
Glass.
With Foot. 2, 4, 8, 16 ounce.
Pressed Lines and Figures.

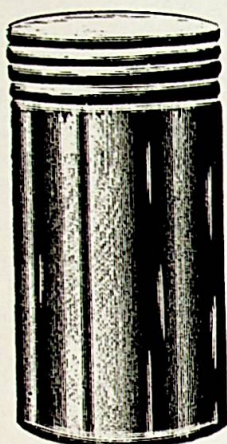


No. 2015—Measuring
Glass.
No Foot. 2, 4, 8, 16 ounce.
Pressed Lines and Figures.



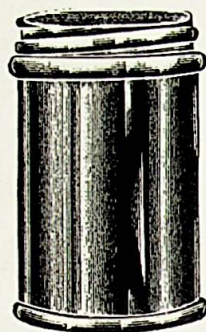
No. 2021—Graduate.
Lines and Figures Pressed.
1, 2, 4, 8, 16, 32 ounce.
Packed each in carton.

QUANTITY PACKED IN A BARREL MAY VARY. SAME IS ESTIMATED AND NOT GUARANTEED.



No. 2002—Blown
Jelly.

From $\frac{1}{2}$ to 32 oz.



No. 2017—Ointment
Jar.

Nickel Caps.
 $\frac{1}{4}$, $\frac{1}{2}$, 1, 2, 3, 4 ounces.

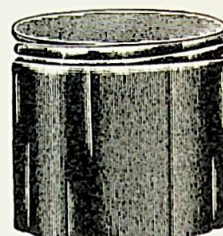
Amber, Blue, Crystal, Opal.



No. 2022—Ointment
Jar.

Nickel Caps.
3 and 4 ounces.

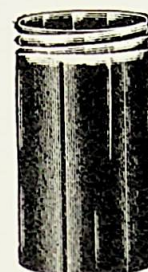
Amber, Blue, Crystal, Opal.



No. 2018—Ointment
Pot.

Nickel Caps.
 $\frac{1}{4}$, $\frac{1}{2}$, 1, 2, 3, 4, 8, 16 ounces.

Amber, Blue, Crystal, Opal.



No. 2019—Pressed
Jelly.

Nickel Caps.
 $\frac{1}{4}$, $\frac{1}{2}$, 1, 2 and 4 ounces.

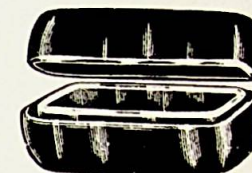
Crystal.



No. 2023—Round Patch
Box, Opal.

Flat or Indented Lids.

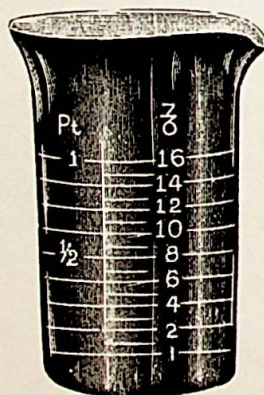
$\frac{1}{8}$, $\frac{1}{4}$, $\frac{1}{2}$, 1, 1 $\frac{1}{2}$, 2 ounces.



No. 2024—Square Patch
Box, Opal.

Flat Lids.

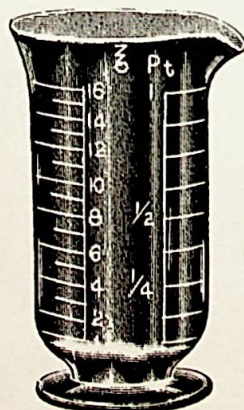
$\frac{1}{2}$ and 1 ounce.



No. 2012—Beaker Graduate.

1 ounce to 32 ounces.

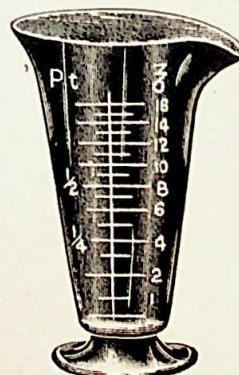
Each Packed in Paper Carton.



No. 2011—Tumbler Graduate

1 ounce to 32 ounces.

Each Packed in Paper Carton.



No. 2010—Cone Shaped
Graduate.

1 drachm to 32 ounces.

Each Packed in Paper Carton.



No. 2008—Spirit Lamp.

Iron Mold, with Ground Cap, Wick
and Wick Tubes. Boxed.

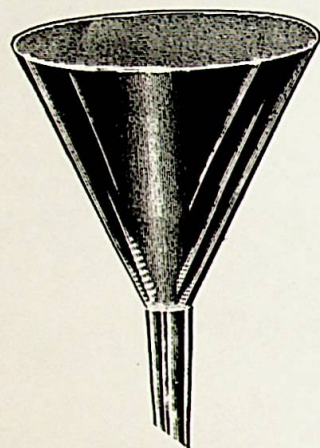
1, 2, 4 and 8 ounces.



No. 2009—Balsam Bottle.
With Ground Glass Cap.

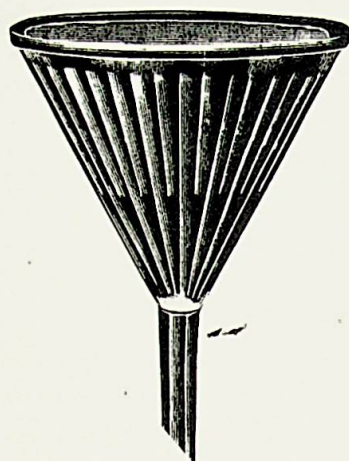
1 $\frac{1}{2}$ ounces. Boxed.

QUANTITY PACKED IN A BARREL MAY VARY. SAME IS ESTIMATED AND NOT GUARANTEED.



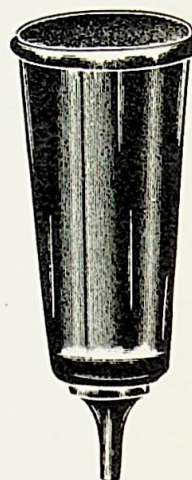
No. 2003—Plain Funnels, Finished.

From 2 to 128 ounces.



No. 2004—Ribbed Funnels.
Bowl Corrugated Inside. Stem Corrugated Outside.

From 2 to 128 ounces.



No. 2005—Pressed Cone Percolators.

Pint, Quart, $\frac{1}{2}$ Gallon and 1 gallon.



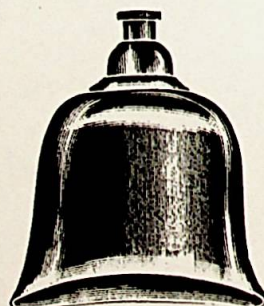
No. 2005—Exhaust Glass.
With or Without Metal Collar.



No. 2026—Vaginal Douche

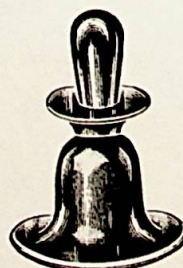


No. 2027—Valentine Receiver
Plain or Engraved.



No. 2028—Exhaust Glass.
Diameter Open End 4 inches.

No. 2029—Exhaust Glass.
Diameter Open End $5\frac{1}{4}$ inches.
With or Without Metal Collar.



No. 2029—Nipple Shield.
Glass Only.



No. 2030—Precipitating Jar.
One-Half Gallon.



No. 2031—Cupping Glass.
For Bulb.

Diameter—1 inch.
Diameter— $1\frac{1}{2}$ inch.
Diameter— $1\frac{3}{4}$ inch.
Diameter— $1\frac{1}{2}$ inch.
Diameter—2 inch.



No. 2031—Cupping Glass.
Plain.

Diameter—1 inch.
Diameter— $1\frac{1}{2}$ inch.
Diameter— $1\frac{3}{4}$ inch.
Diameter— $1\frac{1}{2}$ inch.
Diameter—2 inch.

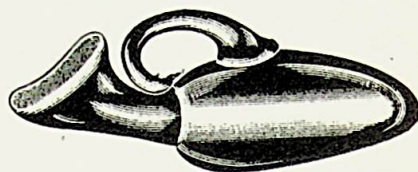
QUANTITY PACKED IN A BARREL MAY VARY. SAME IS ESTIMATED AND NOT GUARANTEED.



No. 2007—Eye Bath, Fluted.
No. 2007—Eye Bath, Plain.
Blue, Crystal or Opal.



No. 3032—Male Urinal.
Plain or Graduated.



No. 2033—Female Urinal.
Plain or Graduated.

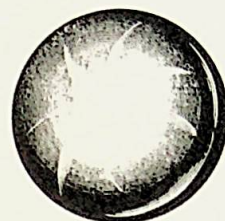


No. 2020—Watch Glass.
Plain or Ground Edge.
Crystal Glass.



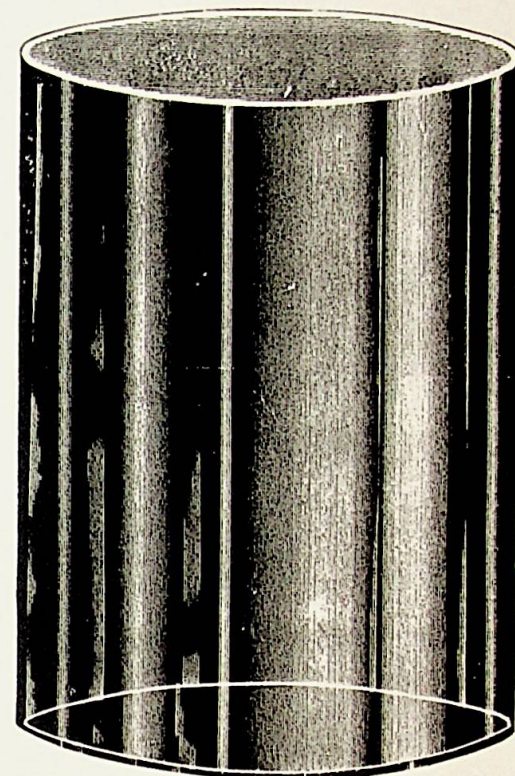
Above Cut Shows Our Method of
Graduation.
Urinals are also furnished Without Handle.

GRADUATED URINALS
do away with the necessity
of a separate graduate in re-
cording the amount of urine
passed in any given time.



No. 2034—1 1/4-inch Furniture
Ball.

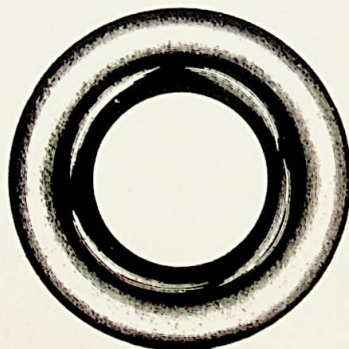
Furnished Ground and Unground.



No. 2036—Iron Mold Battery Jar, Ground Top. 6x8.



No. 2006—Mortar and Pestle.
From 1 to 32 ounces.

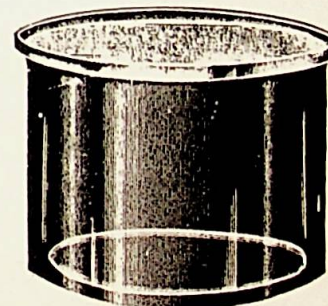


No. 2035—Hand-made Awning Rings.
Small, Medium and Large.

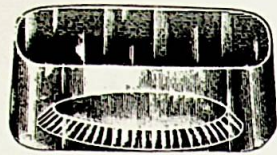


No. 2037—Hanging Fish Globe.

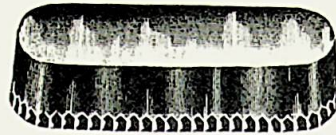
3 3/4-Inch—1/4 Pint.
4 1/4-Inch—1 Pint.
5-Inch—1 1/4 Pint.
5 1/2-Inch—1/2 Gallon.
6 1/2-Inch—1/4 Gallon.
7 1/2-Inch—3/8 Gallon.
8 1/2-Inch—1 Gallon.



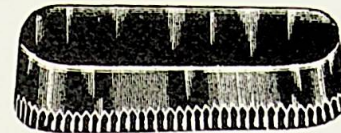
No. 2038—Aquarium.
One Gallon.
Puntied Bottom.



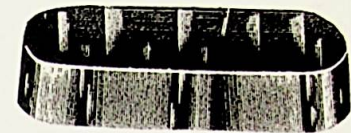
No. 2250—Paper Weight.
Packed 5 gross in barrel.



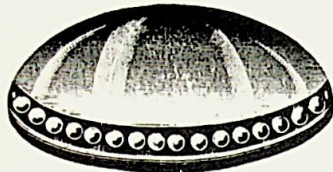
No. 2251—Paper Weight.
Packed 54 doz. in barrel.



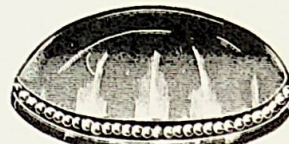
No. 2252—Paper Weight.
Packed 5 gross in barrel.



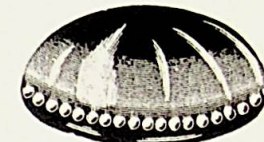
No. 2253—Paper Weight.
Packed 5 gross in barrel.



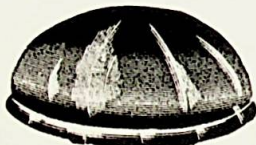
No. 2255—Paper Weight.
Packed 2½ gross in barrel.



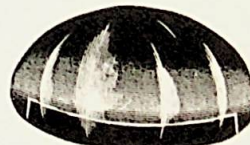
No. 2256—Paper Weight.
Packed 4 gross in barrel.



No. 2257—Paper Weight.
Packed 5 gross in barrel.



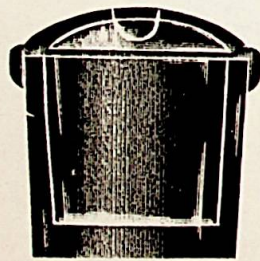
No. 2259—Paper Weight.
Packed 5 gross in barrel.



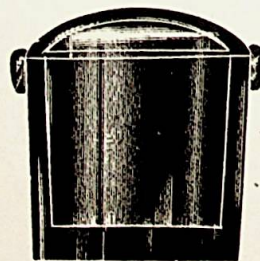
No. 2260—Paper Weight.
Packed 5 gross in barrel.



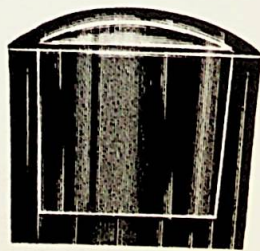
No. 2261—Paper Weight.
Blown for Shells.
Packed 5 gross in barrel.



No. 2349—School Ink.
Packed 3000 pieces in barrel.



No. 2350—School Ink.
Packed 3000 pieces in barrel.



No. 2351—School Ink.
Packed 3000 pieces in barrel.



No. 2352—School Ink.
Packed 5000 pieces in barrel.



No. 2353—School Ink.
Packed 5000 pieces in barrel.



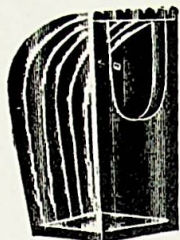
No. 2354—School Ink.
Packed 5000 pieces in barrel.

QUANTITY PACKED IN A BARREL MAY VARY. SAME IS ESTIMATED AND NOT GUARANTEED.

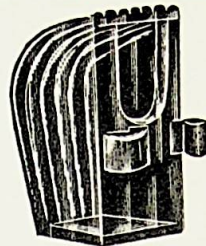
SCALE HALF SIZE.



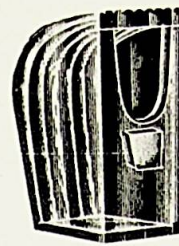
No. 2300—Seed Cup.
Packed 6 gross in barrel.



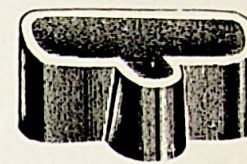
No. 2301—Seed Cup.
Packed 5 gross in barrel.



No. 2302—Seed Cup.
Packed 5 gross in barrel.



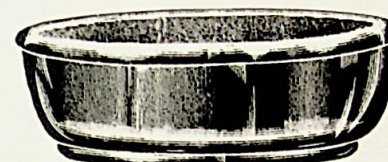
No. 2303—Seed Cup.
Packed 6 gross in barrel.



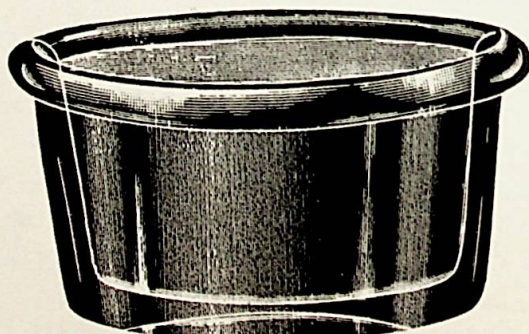
No. 2304—Seed Cup.
Packed 6 gross in barrel.



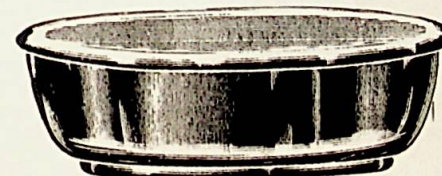
No. 2305—Seed Cup.
Packed 10 gross in barrel.
Full Size.



No. 2307—Small Bird Bath.
Packed 2 1-12 gross in barrel.



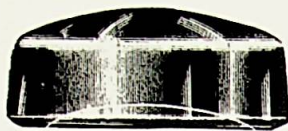
No. 2306—Seed Cup.
Packed 5 gross in barrel.
Full Size.



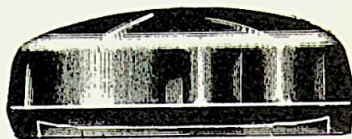
No. 2308—Large Bird Bath.
Packed 1 1/2 gross in barrel.

ALL SEED CUPS AND BIRD BATHS
FURNISHED IN CRYSTAL OR OPAL

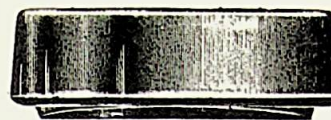
QUANTITY PACKED IN A BARREL MAY VARY. SAME IS ESTIMATED AND NOT GUARANTEED.



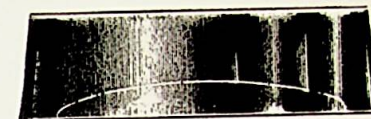
No. 2416—Full Size.
Weight 1½ oz.



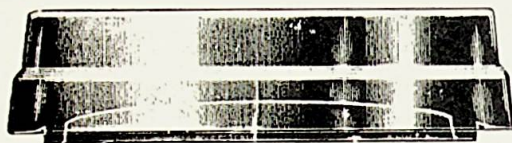
No. 2417—Full Size.
Weight 2½ oz.



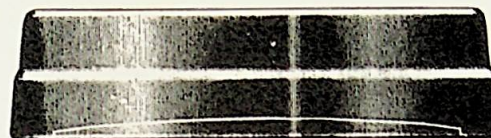
No. 2418—Full Size.
Weight 2½ oz.



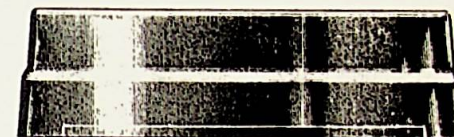
No. 2419—Full Size.
Weight 2½ oz.



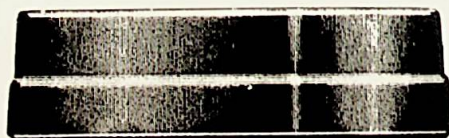
No. 2420—Light.
Weight 6 oz.



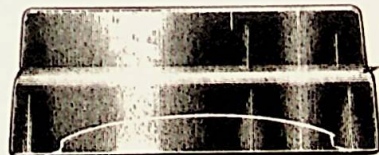
No. 2421—Light.
Weight 6½ oz.



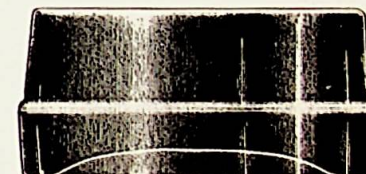
No. 2422—Light.
Weight 4½ oz.



No. 2424—Light.
Weight 5½ oz.



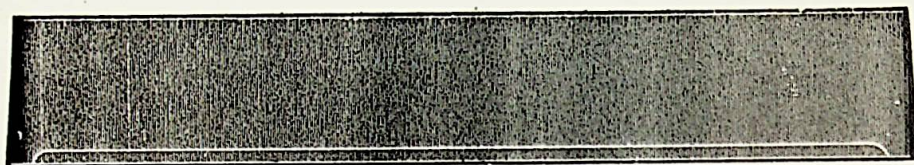
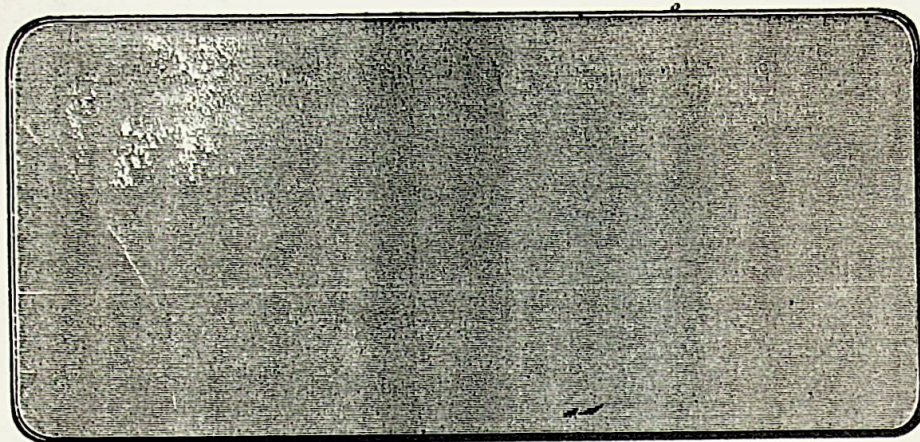
No. 2425—Light.
Weight 4 oz.



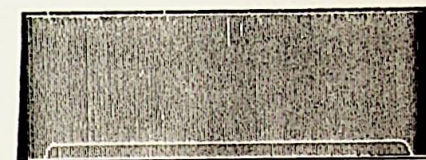
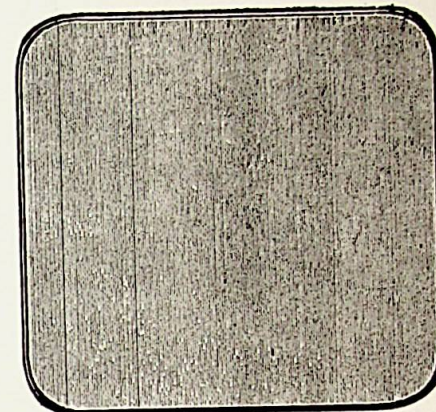
No. 2423—Light.
Weight 4½ oz.



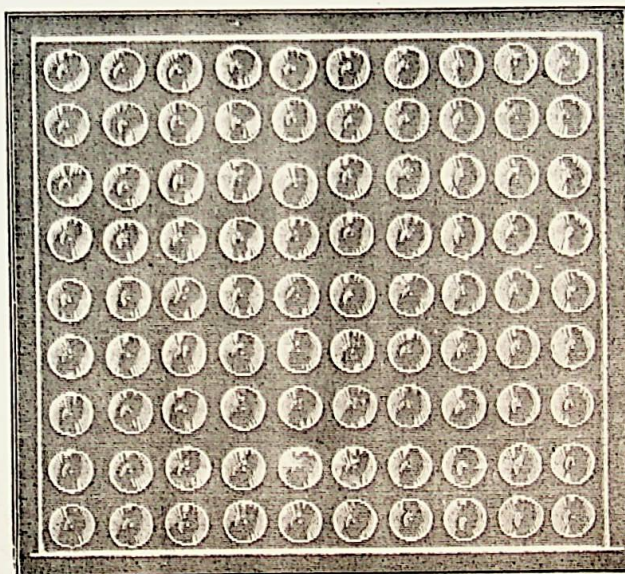
No. 2426—Light.
Weight 2 oz.



No. 2427—Light.
 $5\frac{5}{16} \times 2\frac{1}{2} \times \frac{3}{8}$ inches. Weight 14 ounces.
 Also $6 \times 2\frac{1}{2} \times \frac{3}{8}$ inches. Weight 10 $\frac{1}{2}$ ounces.



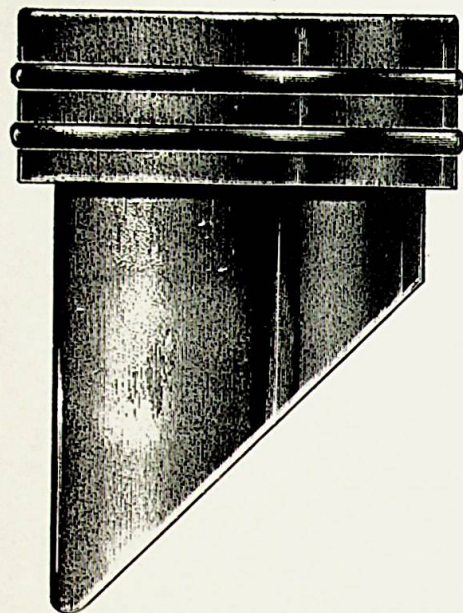
No. 2428—Light.
 $2\frac{7}{16} \times 2\frac{1}{2} \times \frac{3}{8}$ inches. Weight 6 $\frac{1}{2}$ ounces.
 Also $2\frac{1}{2} \times 2\frac{1}{2} \times \frac{3}{8}$ inches. Weight 4 $\frac{1}{2}$ ounces.



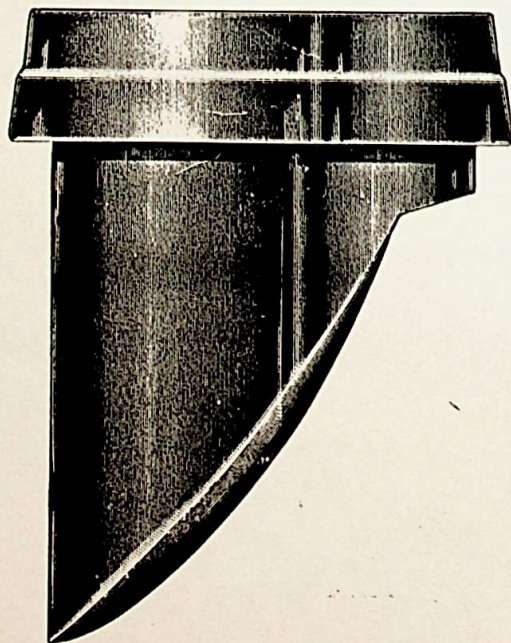
No. 2429—Dew Drop Light.
 $14 \times 14\frac{1}{4} \times \frac{5}{16}$ inches. Weight 8 $\frac{3}{4}$ pounds.
 Also $13\frac{1}{2} \times 14\frac{1}{4} \times \frac{5}{16}$ inches. Weight 9 $\frac{1}{4}$ pounds.

VAULT LIGHTS PACK FROM 300 TO 600 POUNDS PER BARREL

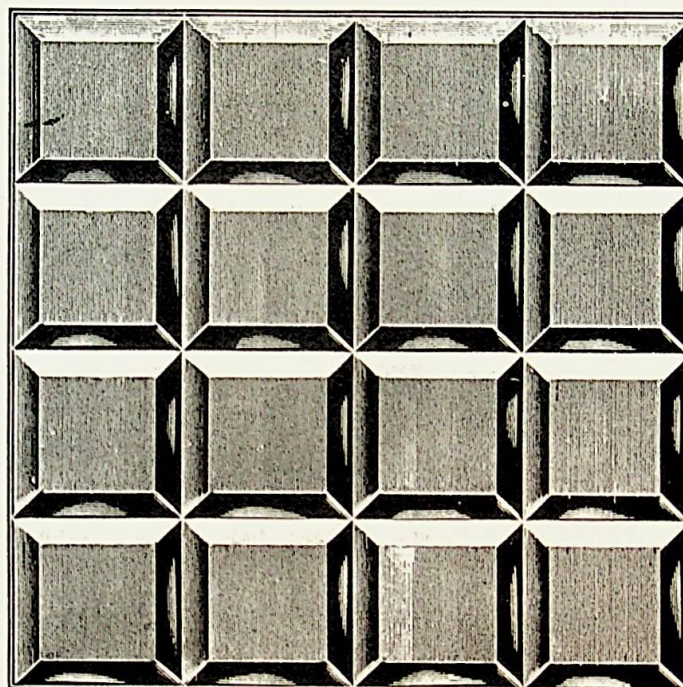
PENDENT LIGHTS. Full Scale.



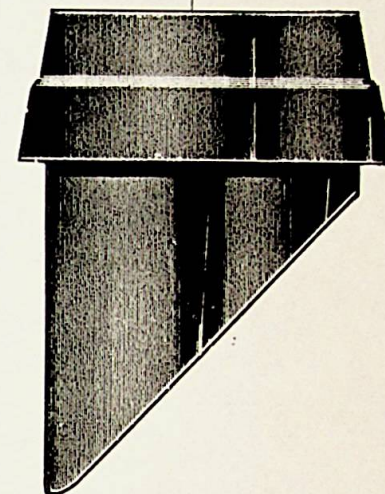
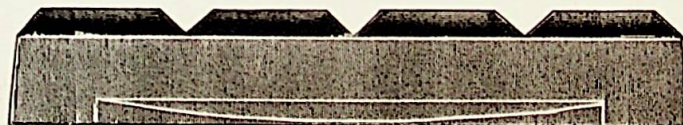
No. 2430—Pendent Light.
Weight 15 ounces.



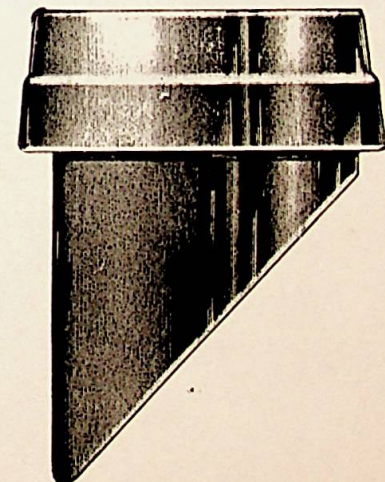
No. 2433—Pendent Light.
Weight 15 ounces.



No. 2432—Block Diamond Light.
4x4x $\frac{3}{8}$ inches.
Weight 15 $\frac{1}{2}$ ounces.



No. 2431—Pendent Light.
Weight 8 ounces.



No. 434—Pendent Light.
Weight 8 ounces.

VAULT LIGHTS PACK FROM 300 TO 500 POUNDS PER BARREL.