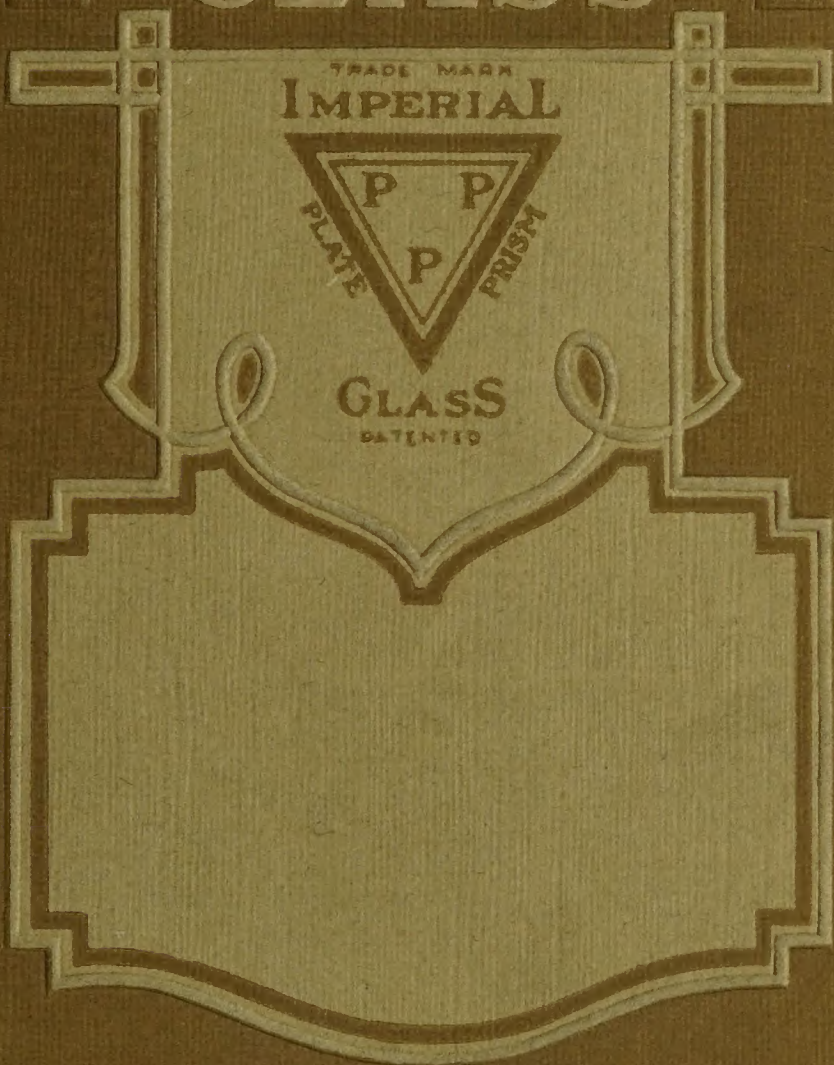


High Grade
PRISM *and* ORNAMENTAL
PRISMATIC
GLASS



PRESSED PRISM PLATE GLASS ©

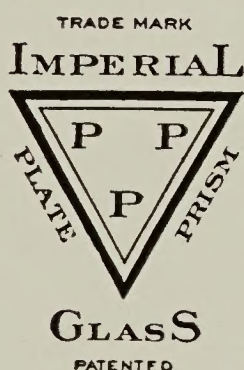
Chicago Sales Office 23 N. DEARBORN STREET
CHICAGO

New York Sales Office 44 EAST 23rd STREET
NEW YORK CITY

Imperial Prism-Plate Glass

Imperial Prism-Plate Ornamental Glass

Imperial Prism-Skylight Glass



Write for Samples and Prices

FOR SALE BY GLASS JOBBERS EVERYWHERE

Pressed Prism Plate Glass Company

Chicago Sales Office, 25 North Dearborn Street

New York Sales Office, 44 East 23d Street

New York City

Factory - - Morgantown, West Virginia

Imperial Prism-Plate Ornamental Glass

a beautiful product
now being largely used

for deck lights or windows for car or steam-boat use, partitions, door lights, vestibule doors and ornamental ceiling lights, for bank and other street windows where semi-obscurity is desired, and for any place where clear, white light is wanted with ornamental design.

This is plate glass with ground and polished backs and sharp clear patterns, and must not be confused with cheaper grades of rolled glass.

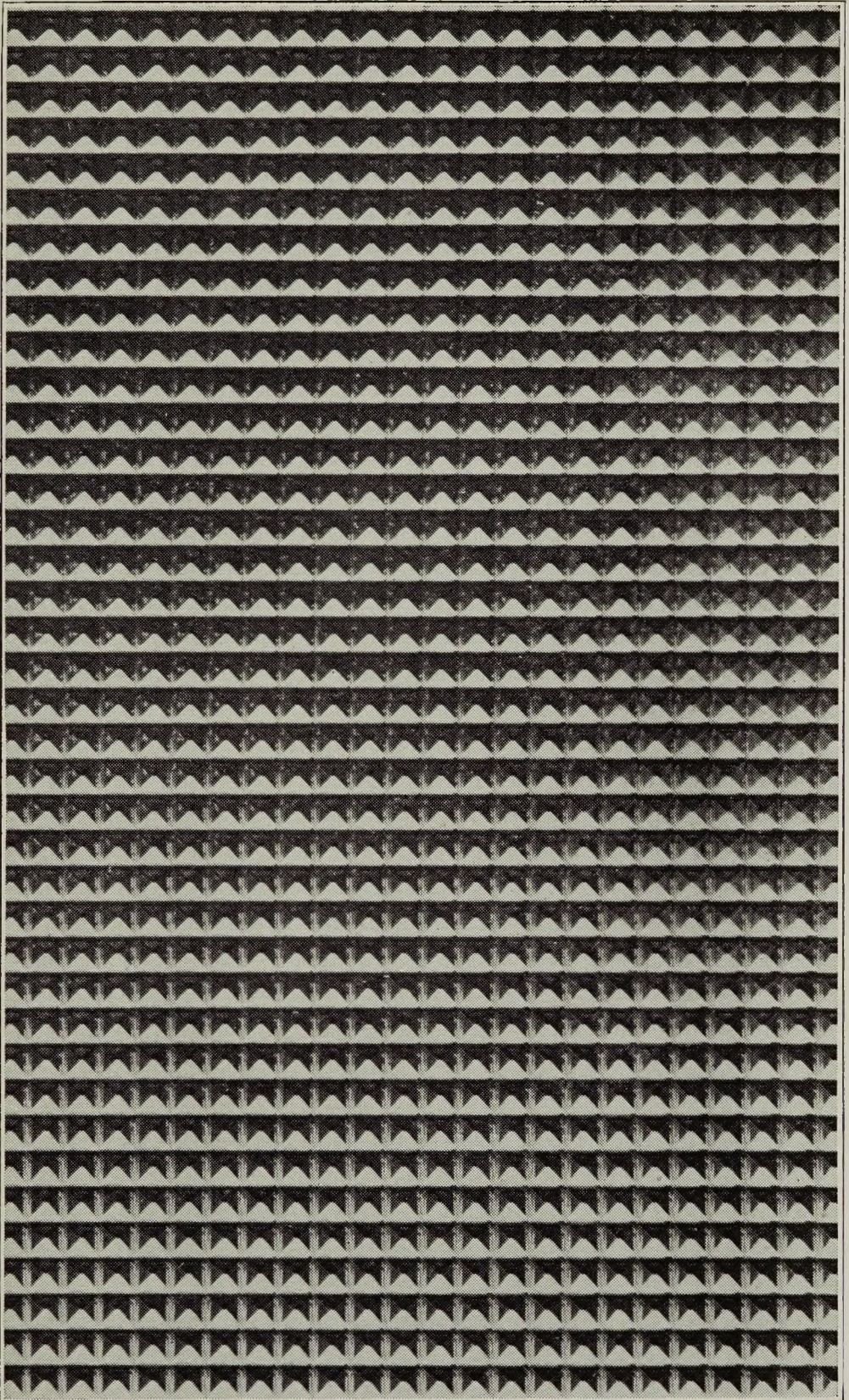
For stock patterns:

Styles O-1 (semi-obscure); O-2 (semi-obscure);
O-3 (transparent) O-4 (semi-obscure);
 O-5 (semi-obscure)

Send for samples

Special and exclusive designs made if desired

PRESSED PRISM PLATE GLASS COMPANY

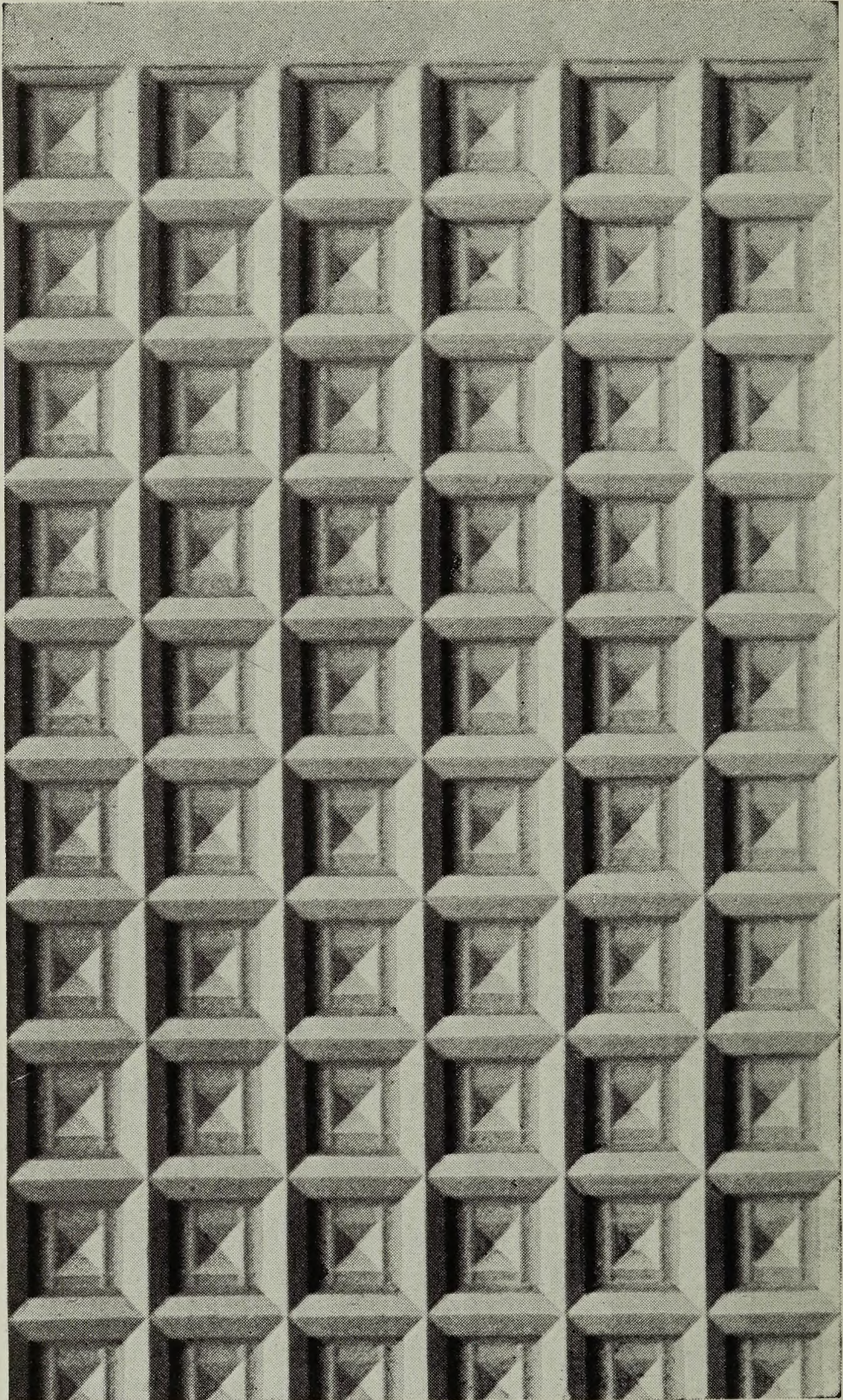


(SEMI-OBSCURE)

"Imperial" Prism-Plate Ornamental Glass

Style O-1. For Door Lights and Partitions, Deck
or Ventilation Lights, Ceilings, etc.

Ground and polished one side. Cut in sizes up to 54" x 72"



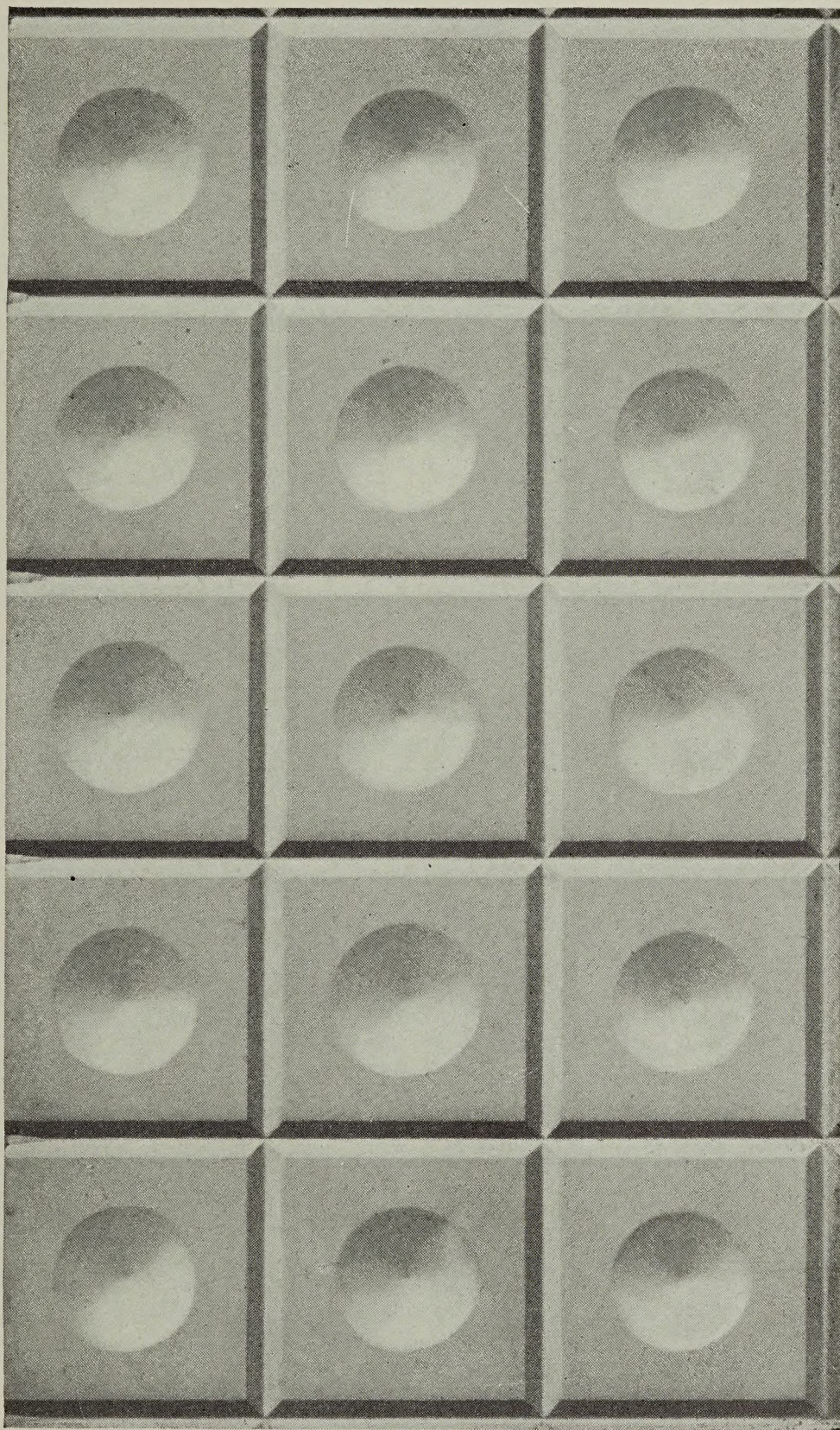
(SEMI-OBSCURE)

"Imperial" Prism-Plate Ornamental Glass

Style O-2. For Door Lights and Partitions, Deck
or Ventilation Lights, Ceilings, etc.

Ground and polished one side. Cut in sizes up to 54" x 72"

PRESSED PRISM PLATE GLASS COMPANY

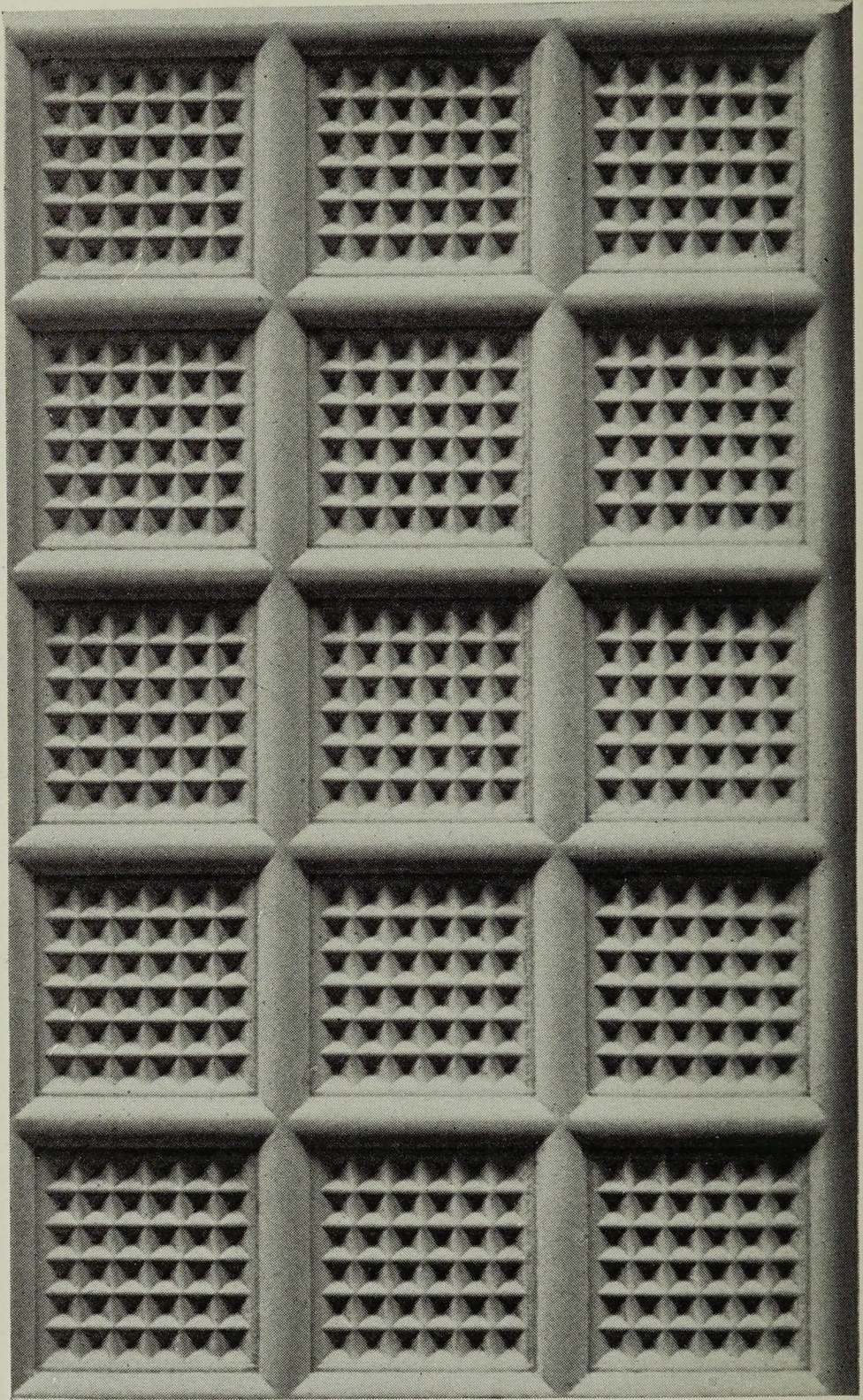


(TRANSPARENT)

"Imperial" Prism-Plate Ornamental Glass

Style O-3. For Door Lights and Partitions, Deck
or Ventilation Lights, Ceilings, etc.

Ground and polished one side. Cut in sizes up to 54" x 72"

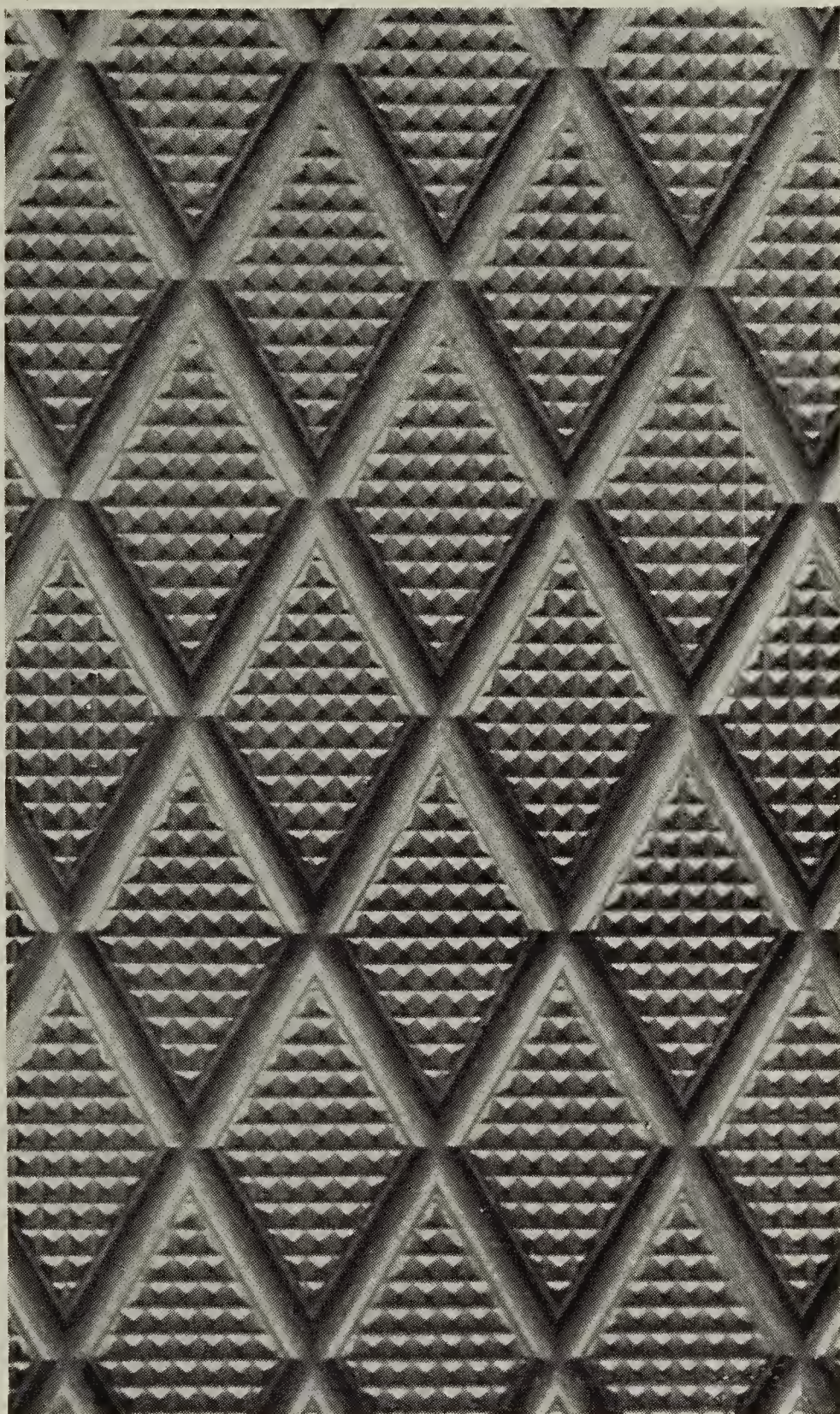


(SEMI-OBSCURE)

"Imperial" Prism-Plate Ornamental Glass

Style O-4. For Door Lights and Partitions, Deck
or Ventilation Lights, Ceilings, etc.

Ground and polished one side. Cut in sizes up to 54" x 72"



(SEMI-OBSCURE)

"Imperial" Prism-Plate Ornamental Glass

Style O-5. For Door Lights and Partitions, Deck
or Ventilation Lights, Ceilings, etc.

Ground and polished one side. Cut in sizes up to 54" x 72"
or 72" x 54"

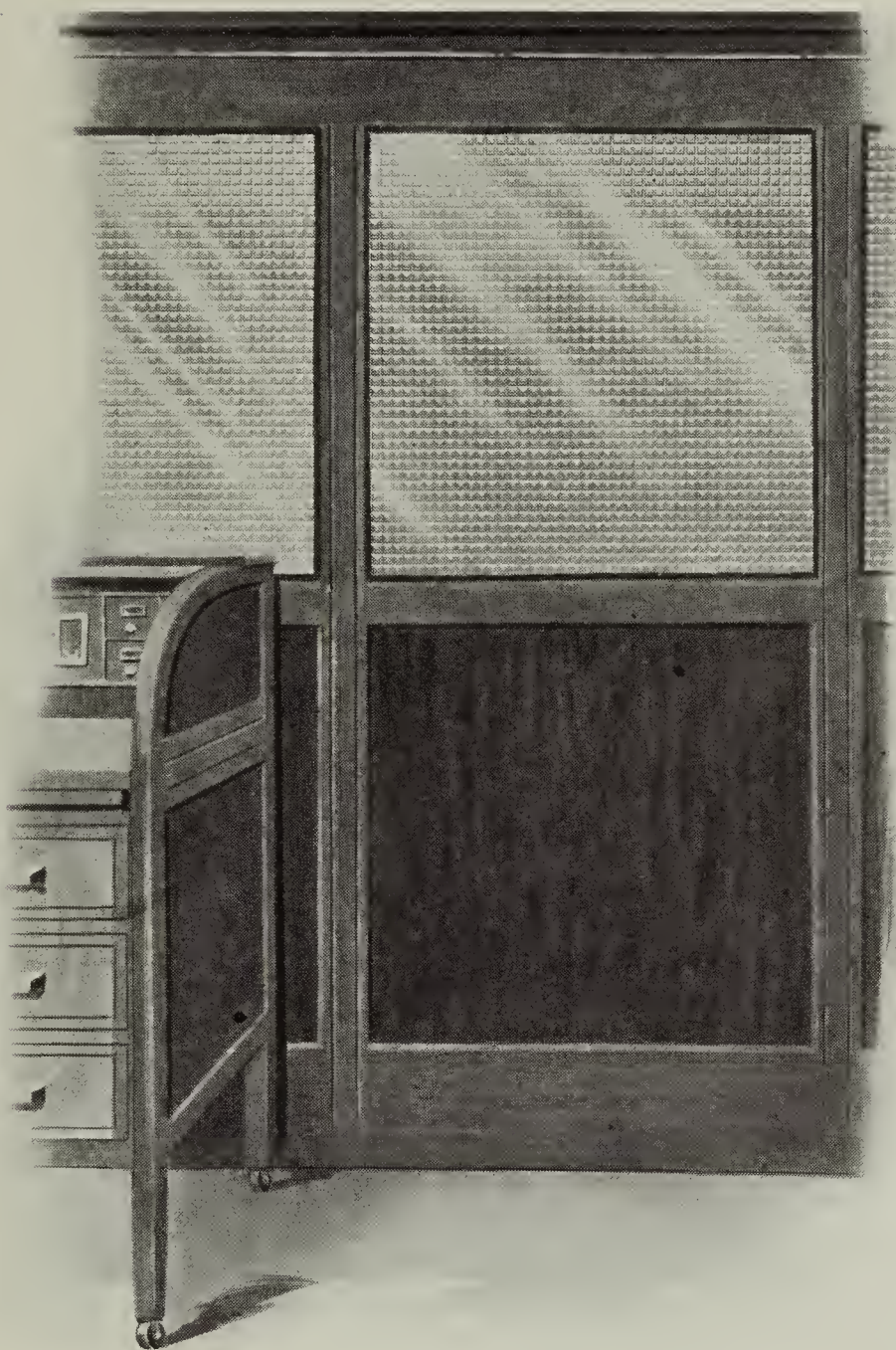
PRESSED PRISM PLATE GLASS COMPANY



*Illustration Showing
Style O-1 in Actual Use
(Semi-Obscure)*



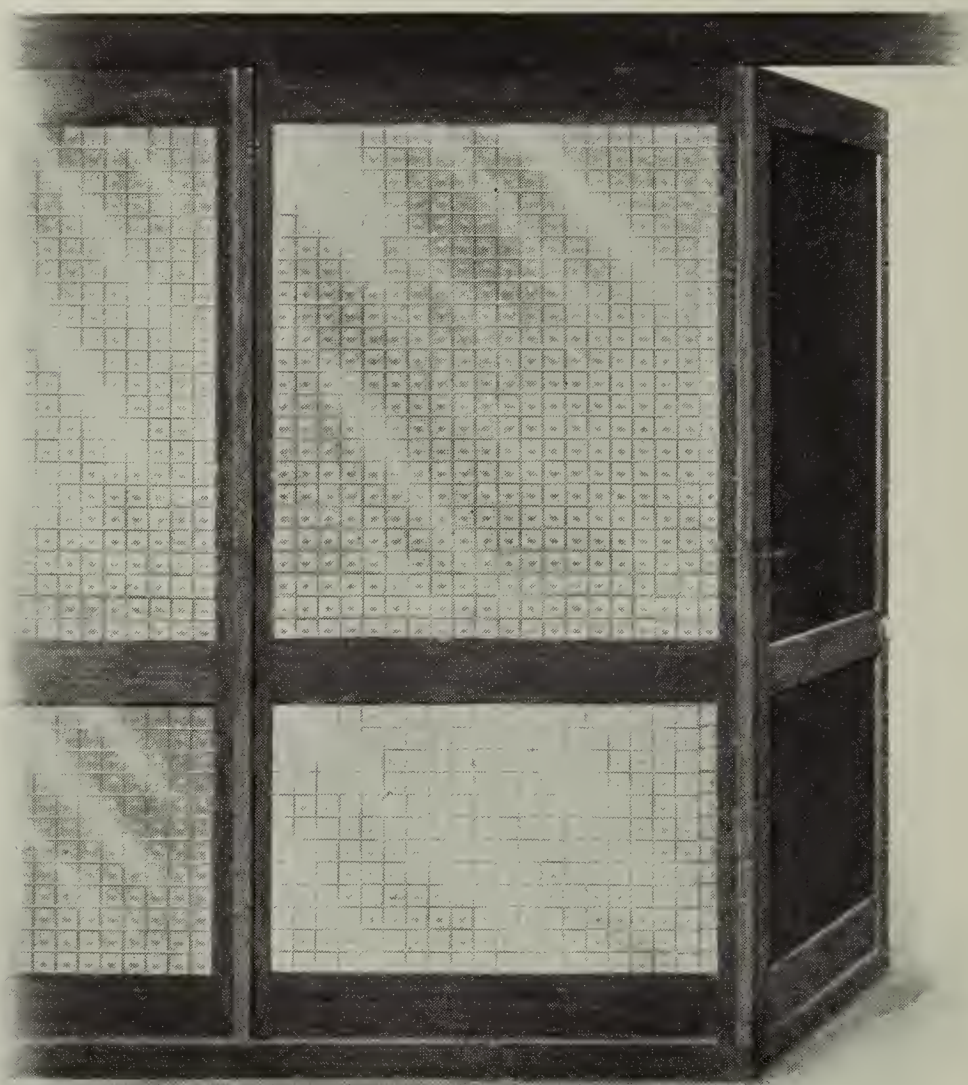
PRESSED PRISM PLATE GLASS COMPANY



*Illustration Showing
Style O-2 in Actual Use
(Semi-Obscure)*



PRESSED PRISM PLATE GLASS COMPANY



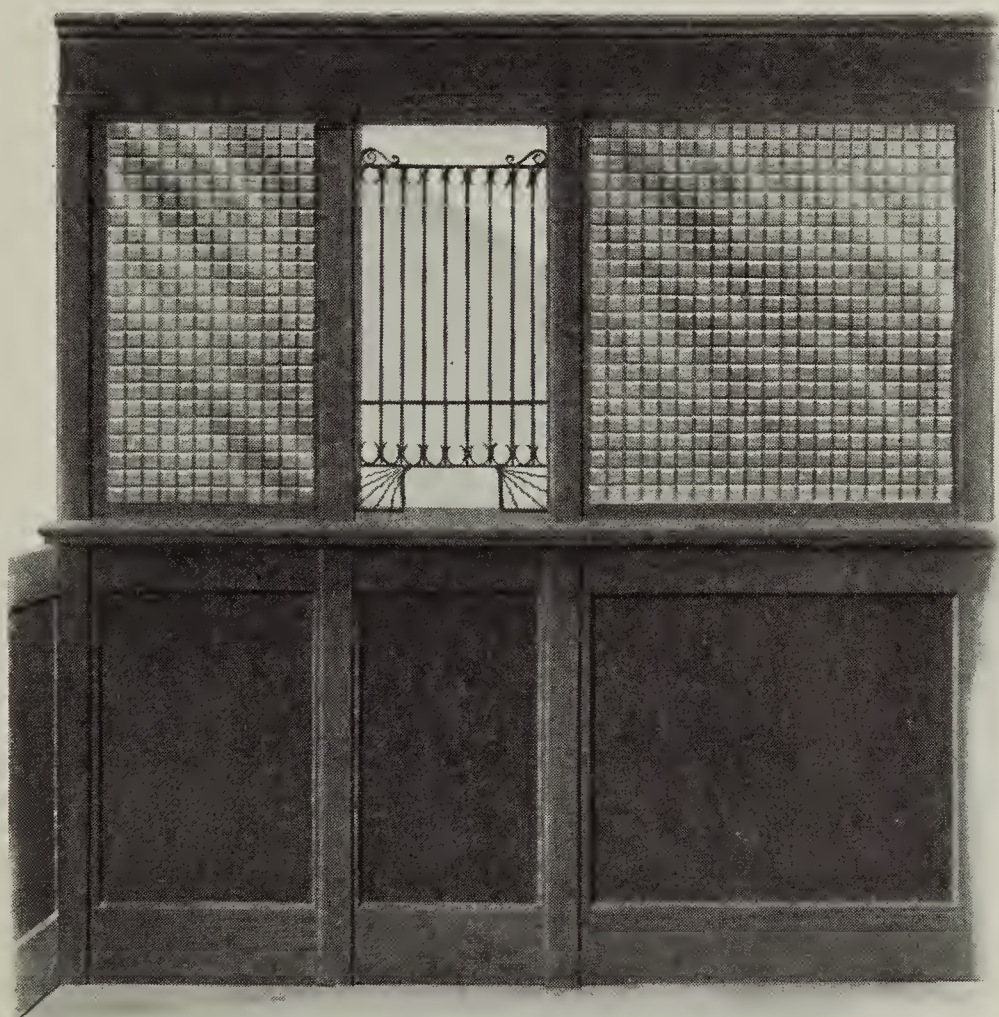
*Illustration Showing
Style O-3 in Actual Use
(Transparent)*

OUR products are used by the best architects throughout the country in highest grade of public and office buildings, stores, residences, apartments, warehouses and department stores.

PRESSED PRISM PLATE GLASS COMPANY



Illustration Showing Style O-5 in Actual Use (Semi-Obscure)



Fisher Building, Chicago

Illustration Showing Style O-4 in Actual Use (Semi-Obscure)

“Imperial” Prism-Plate Glass

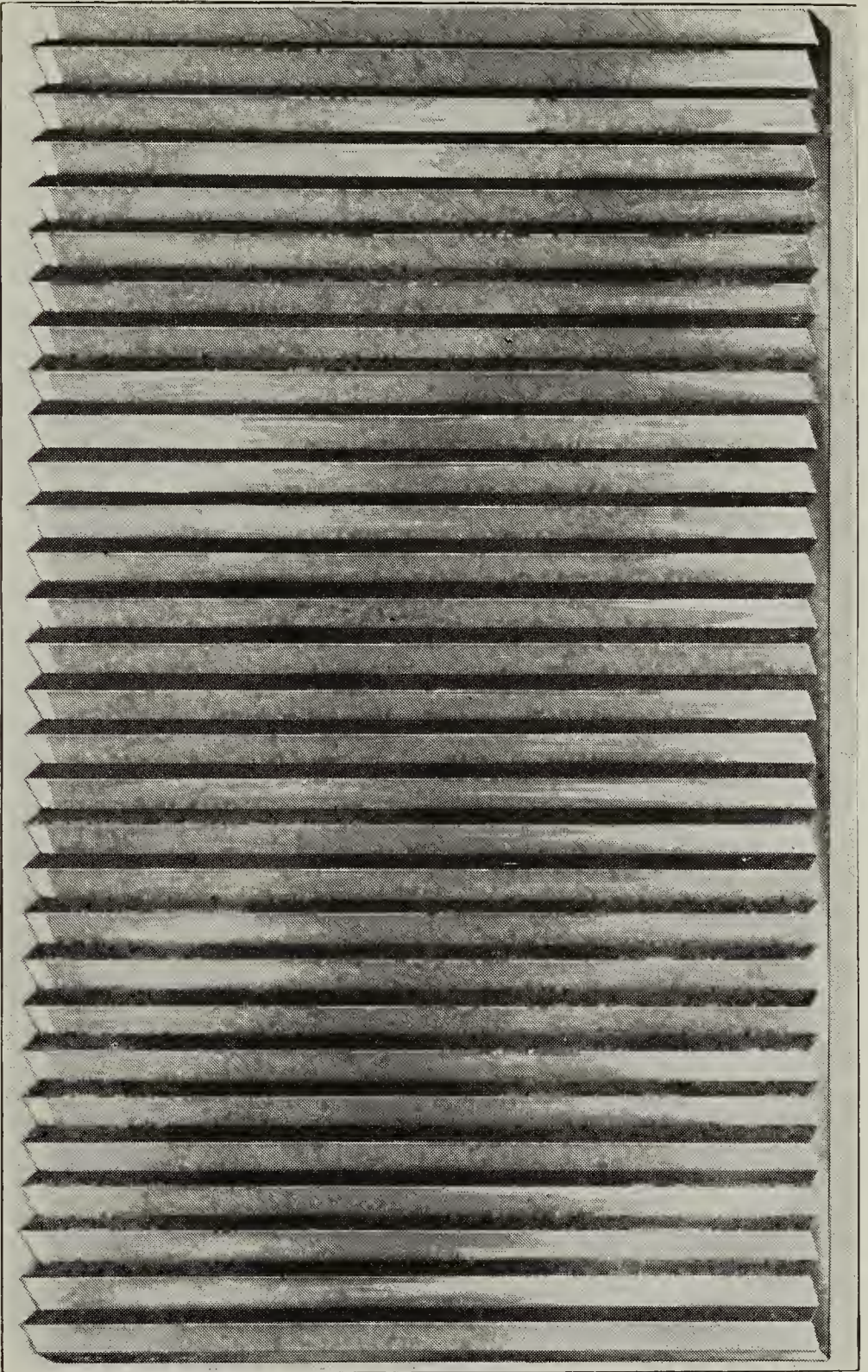
Our Large Plates of prism glass are 54 inches wide and 72 inches high, or 72 inches wide and 54 inches high, or can be furnished as desired in single lights of smaller cut sizes. They are pressed, ground and polished on one side, and have the brilliancy and finish of polished plate glass. It is as much superior to the common, rolled sheet prism as polished plate is to the ordinary window glass, and the street surface of our glass being polished corresponds with other plate glass used in the building, and does not detract from its appearance, like the rolled sheets or small wired 4-inch prism squares. Architects will appreciate this.

Beautiful in Appearance Imperial Prism Plate-Glass is a beautiful product. It is well annealed and tempered, and cuts with a diamond like plate glass, and has the same strength and durability. It should be used in upper sash of windows in connection with clear glass in the lower sash, and when so installed it makes an ideal window, and is a most effective and economical way of lighting interiors at a great saving of gas or electricity.

In Efficiency the large plate or light being cut to fill the entire sash of the window opening, the effect of illumination is largely increased over the *old style 4x4-inch* prism plates framed up with a network of wires which obstruct the light

Easily Cleaned Our large polished prismatic lights are easily cleaned like ordinary glass. They do not have hundreds of corners, inside and outside, to catch the dust and dirt, like the small 4x4-inch prisms put together with wires or bars in the old way.

No Rust or Leaks Our prism glass being in one plate, and not framed up like the small 4-inch prisms, there is no metal work to corrode or wear out, requiring costly renewal, and there can be no leaks in the corners to cause damage from dust, snow or rain.



"Imperial" Prism-Plate Glass

All Angles for Vertical Installation

We recommend this glass for use in store fronts,
transoms and upper sash

Ground and polished one side. Cut in sizes up to 54" x 72"
or 72" x 54"

What Our Prism Glass Does

IT greatly increases the amount of light over that obtained by the use of plain plate or window glass.

It makes possible a reduction of a large percentage in the area of light-wells, which area can be put into valuable store space.

It increases the value of rentals.

It lights up dark corners.

It reduces or cuts out entirely the use of artificial light in the daytime.

It proves a good investment, and soon pays for itself when properly installed.

Its use is founded on scientific principles.

Its value is recognized as a necessary article in building construction.

With our large polished plates it is easily installed and cleaned.

Perusal of the following pages will show you how simple a matter it is to select and order prism glass. There is no occasion to pay extraordinary prices for so-called engineering. Prism glass is a staple product and should be sold as such.

Any glazier can set prism glass in ordinary sash just as readily as he can set a piece of plate. The only thing necessary is to select the right angle from the foregoing table, and in certain cases to make a slight increase in sash-weights. On every piece of glass shipped we place a tag stating plainly, which is the top and which the outside. Even if these tags should become detached, however, anyone can determine by referring to the preceding table just how the glass ought to be set.

All prism glass, except the inverted prisms I-B and I-C, are set with the shorter angle to the top of the window. Inverted prisms are set with the shorter angle to the bottom of the window.

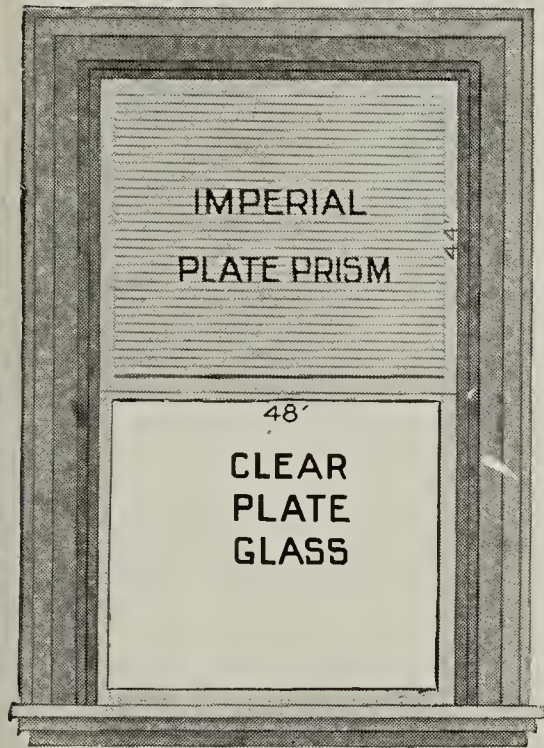
Write for Prices and Samples

For Sale by Glass Jobbers Everywhere

PRESSED PRISM PLATE GLASS COMPANY

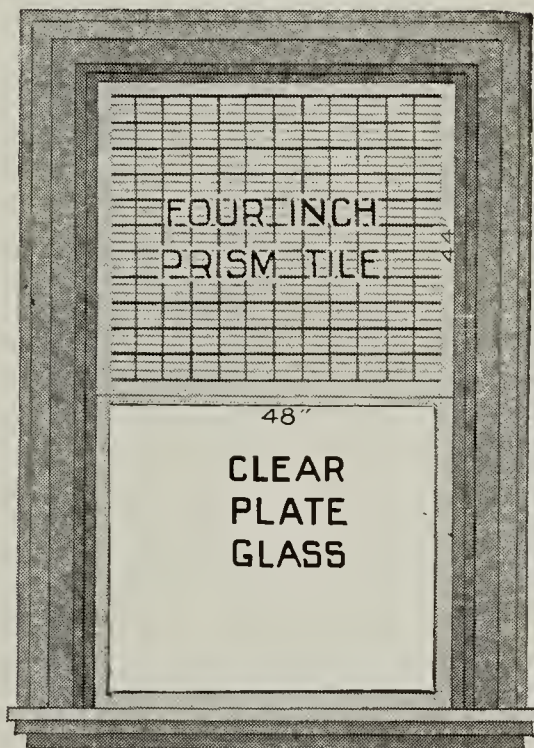
Plan for "Ideal Window" for an
Office Building

IDEAL WINDOW—*The New Way*



No wires. Eight corners only
Easily cleaned

The Old Way



Many wires. 1056 corners to catch
and hold dirt. Impossible
to keep clean

"Imperial" Prism-Plate Glass

Is ground and polished on one side
and is sold in cut sizes up to
54" x 72" or 72" x 54"

How to Order Prism Glass

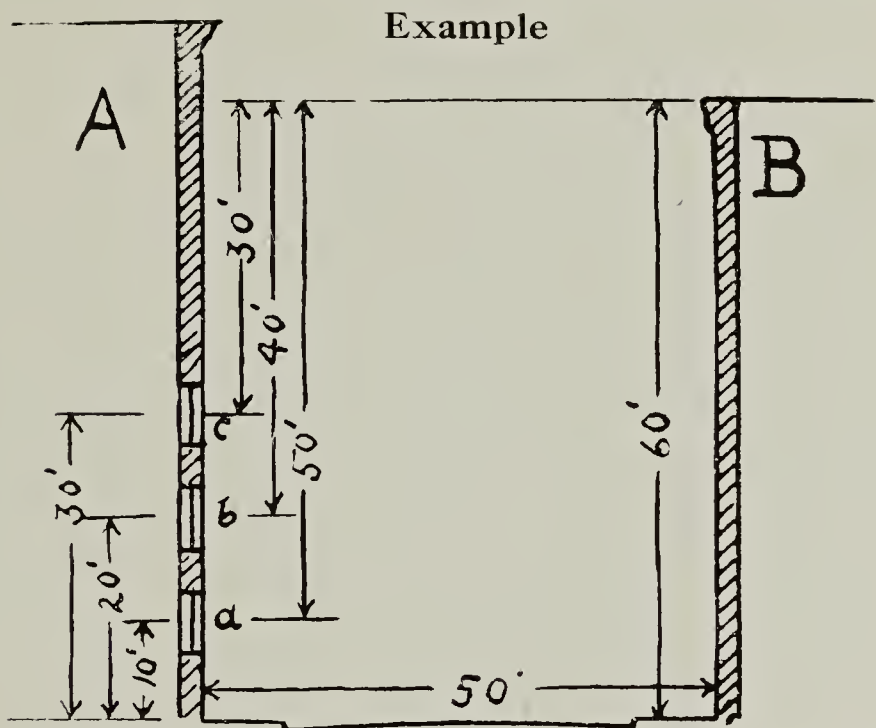
WHEN ordering prism glass always state which is the width and which the height of the glass, naming the width first. If no other directions are given a light ordered 24x36 is understood to be 24 inches wide and 36 inches high, and if ordered 36x24 is understood to be 36 inches wide and 24 inches high. This is very important in ordering prism glass.

To ascertain the proper prism to use in order to get the best results in any case, simply divide the height of the opposite building (above the center of the window in which the glass is to be installed) by the width of the street, alley or court.

The quotient Q is equal to the *height of opposite building* divided by the width of the street, alley or court.

When quotient Q is from

| | | | | | | | |
|------|----------|------|---------|---|--------|---|----------------------------------|
| O | to | .46 | use our | D | prism | } | Smooth side of glass outside |
| .46 | " | .60 | " | " | CC | | |
| .60 | " | .74 | " | " | C | | |
| .74 | " | .92 | " | " | B | | |
| .92 | " | 1.11 | " | " | I-B | } | I-B=inverted B I-C=inverted C |
| 1.11 | " | 1.26 | " | " | I-C | | |
| 1.26 | " | 1.43 | " | " | A | } | Prims toward street |
| 1.43 | " | 1.53 | " | " | B.R. | | |
| 1.53 | " | 2.90 | " | " | C.R. | | |
| 2.90 | and over | " | " | " | C.C.R. | | |



Prism glass is to be installed in windows a, b, c of building A, these windows being respectively 10, 20 and 30 feet above the street. The total height from the ground to the roof of the opposite building B is 60 feet, and the width of the street 50 feet.

The height then of the opposite building B above the center of window a is 60 feet minus 10 feet or 50 feet. This divided by 50, the width of the street, gives the quotient Q, or 1.00.

Since Q in this case is between .92 and 1.11 the proper prism to use for window a is I-B.

In the same way for window b the height of the opposite building above the center of the window is 60 feet minus 20 feet equals 40 feet, and 40 feet divided by width of street, 50 feet, gives quotient of .80, and .80 being between .74 and .92 for window b, use B prism.

For window c the height of the opposite building above the center of the window is 60 feet minus 30 feet, which leaves 30 feet, and 30 feet divided by the width of the street, 50 feet, gives us a quotient of .60, therefore the CC prism should be used for window c.

In all cases prism glass should be set as close to the outside line of the building as possible.

“Canopy” or “Skylight” prism glass may be used at the discretion of the architect in places where the quotient is above 1.43.

PRESSED PRISM PLATE GLASS COMPANY

**Imperial
Prism-
Plate
Glass**
Used in
Store
Fronts

—
Daylight
for
Matching
Colors



MC CREERY COMPANY BUILDING
Pittsburg, Pa.
D. H. Burnham & Co., Architects

PRESSED PRISM-PLATE GLASS CO.,
Morgantown, W.Va.

Gentlemen:—

Replying to your inquiry of this date I beg to say your lights installed on our first and second floors have made it possible to cut out the arc lamps except on the darkest days, and we are now able to match colors at any point on the floor—to us a matter of greatest importance.

The saving on our light bill has been considerable, but exact figures will not be obtainable until we have made a further test.

We will be glad to have you refer to us any time.

Yours very truly,

MC CREERY & COMPANY

(Signed) Fred E. Powers, V.P.

PRESSED PRISM PLATE GLASS COMPANY



BOSTON STORE BUILDING

Holabird & Roche, Architects

Chicago, Ill.

Chicago, Sept. 18, 1907

PRESSED PRISM PLATE GLASS CO.

512 Monadnock Building

Chicago, Ill.

Dear Sir:—

In reply to your inquiry as to how well satisfied we are with the 3,000 ft. of pressed prism-plate glass which you installed for us, I desire to state that the results are far better than were anticipated. There are certain hours during the day when we can put out practically all the arc lights on our first and second floors.

I have asked our head porter regarding the cleaning of this glass, and he reports that he experiences no difficulty whatever in keeping same in first-class condition.

You are at liberty to bring any prospective purchaser to our store at any time, where they can see for themselves just what the glass is doing.

Very truly yours,

BOSTON STORE

(Signed) Henry G. Hart, Manager

Note
April, 1911
Now over
6000 sq. feet
**Imperial
Prism-Plate
Glass**
in this
Building

PRESSED PRISM PLATE GLASS COMPANY

**Imperial
Prism-
Plate
Glass**
is
Easily
Cleaned



FISHER BUILDING
Chicago, Ill.
J. P. Weber, Architect

PRESSED PRISM PLATE GLASS Co.,

512 Monadnock Building, City.

Dear Sir:—

Regarding your inquiry relative to the cost of cleaning your Imperial Polished Plate Prisms and Ornamental Glass as compared with the cost of cleaning other patterns of obscure glass will say that we have installed in the annex of our building here over 14,000 sq. ft. of Imperial Polished Prisms and Ornamental Glass, about 25% of this being Polished Prisms. It has been my experience that owing to the smooth glazed surface on one side, and the ground and polished surface on the other side of your product, makes the cleaning of same far easier than Chipped Plate Glass or any pattern of Rolled Glass, and the use of prisms in the upper sash of our building, has not required any additional janitor service than we are using in the main building, where we have polished plate in both the upper and lower sash.

Yours very truly,

FISHER BUILDING

(Signed) Chas. B. Osborne, Agent

PRESSED PRISM PLATE GLASS COMPANY



Imperial
Prism-
Plate
Ornamental
Glass
Used in
this
Building

AMERICAN TRUST & SAVINGS
BANK BUILDING
Chicago, Ill.
Jarvis Hunt, Architect

EDWIN A. POTTER, President
F. P. PHILLIPS, Vice President
JAMES R. CHAPMAN, Vice President
JOHN JAY ABBOTT, Vice President

CHARLES S. CASTLE, Cashier
F. J. SCHEIDENBERG, Assistant Cashier
OLIVER C. DECKER, Assistant Cashier
EDWIN L. WAGNER, Assistant Cashier

FRANK H. JONES, Secretary
WILLIAM P. KOFF, Assistant Secretary
IRVING J. SHAW, Assistant Secretary
GEORGE B. CALDWELL, Asst. Sec. & Dep.

The American Trust & Savings Bank

Capital
\$3,000,000.00

La Salle and Monroe Streets,

Surplus
\$1,500,000.00.

Chicago, May 23rd, 1906.

(COPY)

Mr. L. G. Fisher..

Fisher Building,

Chicago, Illinois.

Dear Sir:

Replying to your inquiry as to how we like the "Imperial Plate Ornamental Glass" which we are putting into doors and transoms of our new bank building, I take pleasure in saying that it is eminently satisfactory. As you are aware, our original contracts called for chipped plate glass, and when my attention was called to this new and very brilliant glass, I cancelled the order for the chipped plate, and am very glad indeed that I did so, as the effect of this new glass is much better. All the tenants in our building like it very much.

Very truly yours,

President.

Imperial Prism Skylight Glass

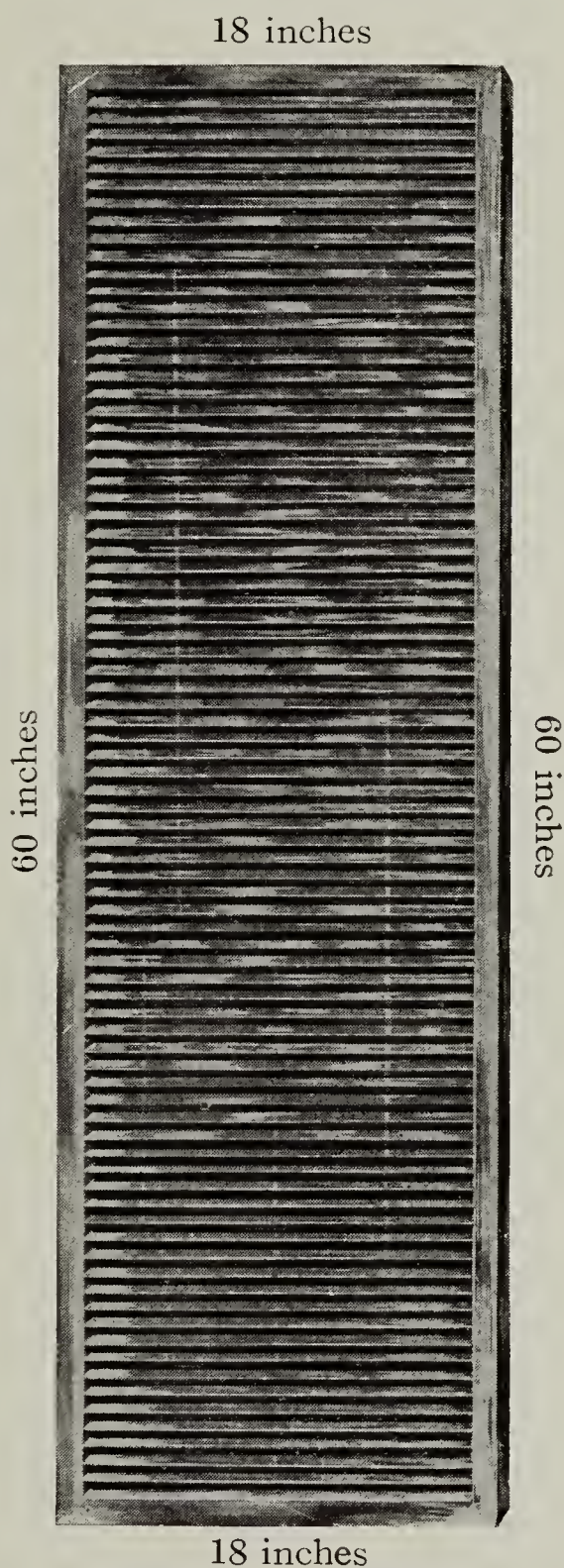
Made in unit plates up to 18x60 inches

FOR skylights, roofs over areaways, in light-wells, etc., in which it is desired to use prism glass, we furnish Imperial Prism Skylight Plates. This product is not ground or polished, and is made with a $\frac{1}{2}$ -inch back besides length of prisms, and thick enough to conform to the requirements of the underwriters.

On account of the large size of the units, 18x60 inches, and the smooth shape of their borders, the number of joints and the possibility of leakage is reduced to a minimum. The use of these *large sized* prism skylight plates also immensely reduces the cost of metal construction in which they are placed. The largest skylight prism plate hitherto manufactured is only 13x13 inches. Our unit plates can be cut to any smaller size.

They are absolutely the best product on the market for lighting rear parts of deep stores, for roofs railway stations, sheds, etc. They can be used horizontally, but to give the best effect should be set on an angle of 30° to 45°.

If amount of order warrants expense of die the size of the units in which this glass is now made can be increased either in width or height, or both.



Imperial Prism Skylight Glass

One-half-inch backs not ground or polished. Weight about eight pounds per square foot.

PRESSED PRISM PLATE GLASS COMPANY

Showing effect in use of
18x60-inch units

Prism Skylight Glass



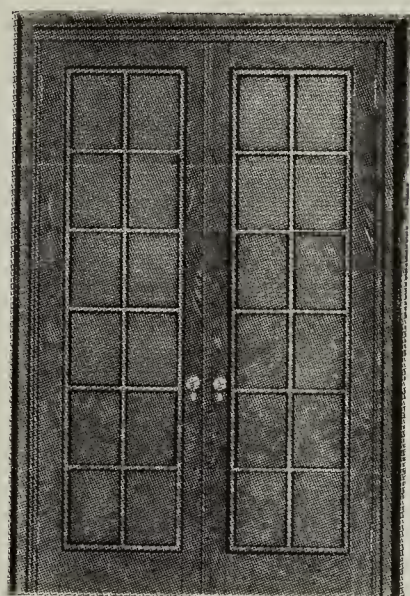
L. STRAUSS & SONS OFFICE BUILDING
New York City, N. Y.

Photograph of **Imperial Prism Skylight Glass** in
office of L. STRAUSS & SONS
42-46 Warren Street, New York City

PRESSED PRISM PLATE GLASS COMPANY

This is a Photograph of a Pair of
Sash Casement Doors
Glazed with

**Imperial Prism-Plate Ornamental
Glass—Style O-1**



Imperial Prism-Plate Ornamental Glass

has been used in some of our various patterns, or **Imperial Prism-Plate Glass** (or both) in all of the buildings shown in this booklet, and are being constantly specified by progressive architects and owners. Inspection of any one of these structures will quickly impress you with the reason why this product is being so extensively used.

PRESSED PRISM PLATE GLASS COMPANY



DENVER & RIO GRANDE R. R. STATION
Salt Lake City, Utah
Henry J. Schlacks, Architect



GENERAL OFFICE BUILDING OF
N. Y. C. & H. R. R. R. STATION
New York City, N. Y.
Reed & Stem } Architects
Warren & Wetmore }



THE COLONY CLUB BUILDING
New York City, N. Y.
McKim, Mead & White, Architects



PEOPLES GAS BUILDING
Chicago, Ill.
D. H. Burnham & Co., Architects



SCARRITT BUILDING
Kansas City, Mo.
Root & Siemons, Architects

PRESSED PRISM PLATE GLASS COMPANY



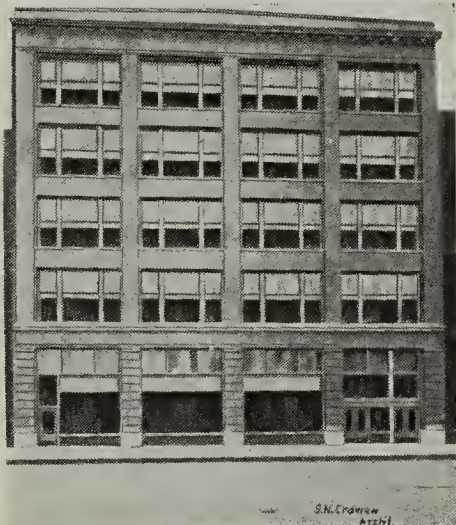
TRUSTEE BUILDING
Seattle, Wash.
C. R. Aldrich, Architect



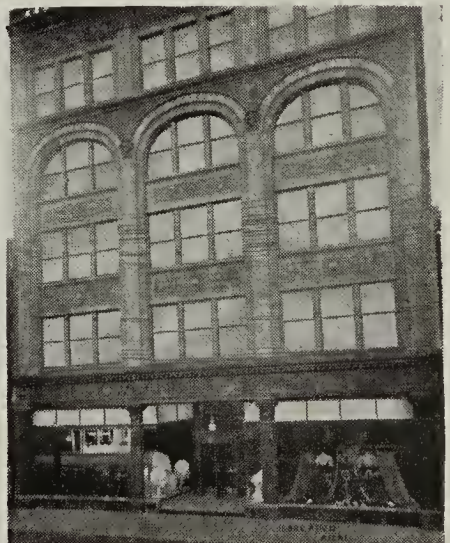
STUDEBAKER BUILDING
South Bend, Ind.
S. S. Beman, Architect



DEVONSHIRE APARTMENT BLDG.
New York City, N. Y.
Neville & Bagge, Architects



MOOS BUILDING
Chicago, Ill.
S. N. Crowen, Architect



HOWLAND DRY GOODS CO'S STORE
Bridgeport, Conn.
Isaac Allen, Architect

PRESSED PRISM PLATE GLASS COMPANY



CROWN POINT COURT HOUSE
Crown Point, Ind.
Beers & Beers, Architects

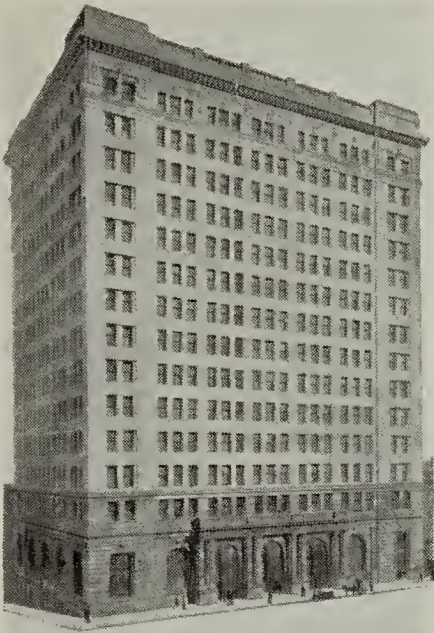


MAYFAIR APARTMENT BUILDING
New York City, N. Y.
Charles A. Rich, Architect



BROADWAY MAIDEN LANE
BUILDING
New York City, N. Y.
Clinton & Russell, Architects

PRESSED PRISM PLATE GLASS COMPANY



NATIONAL BANK OF COMMERCE
BUILDING
Kansas City, Mo.
Jarvis Hunt, Architect



SMITH-GRAY BUILDING
New York City, N. Y.
James B. Baker, Architect



RESIDENCE SENATOR WM. A. CLARK
New York City
Lord & Hewlett Architects



MUNICIPAL COURTS BUILDING
Chicago, Ill.
Jenney, Mundie & Jensen, Architects

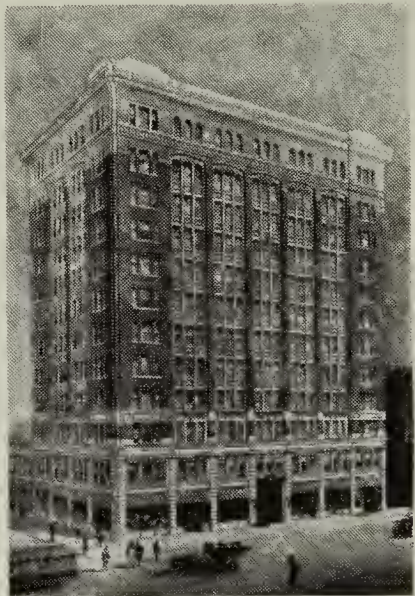
PRESSED PRISM PLATE GLASS COMPANY



HIRAM SIBLEY BUILDING
Rochester, N. Y.
Gordon & Madden, Architects



AMERICAN BANK NOTE BUILDING
New York City, N. Y.
Kirby, Petit & Green, Architects



A. C. FOSTER BUILDING
Denver, Colo.
Wm. E. Fisher & Bro., Architects



CORNWELL ESTATE BUILDING
Rochester, N. Y.
C. F. Crandall and
J. F. Strobel, Jr. } Architects

PRESSED PRISM PLATE GLASS COMPANY



EVERETT BUILDING
New York City, N. Y.
Goldwin, Starrett } Architects
and VanVleck }



STEGER BUILDING
Chicago, Ill.
Marshall & Fox, Architects



HARVESTER BUILDING
Chicago, Ill.
C. A. Eckstorm, Architect

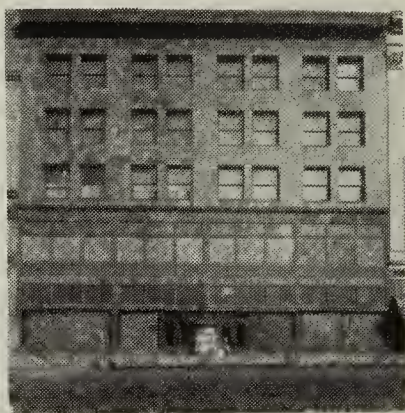


CARTER BUILDING
Houston, Texas
Sanquinet & Staats, Architects

PRESSED PRISM PLATE GLASS COMPANY



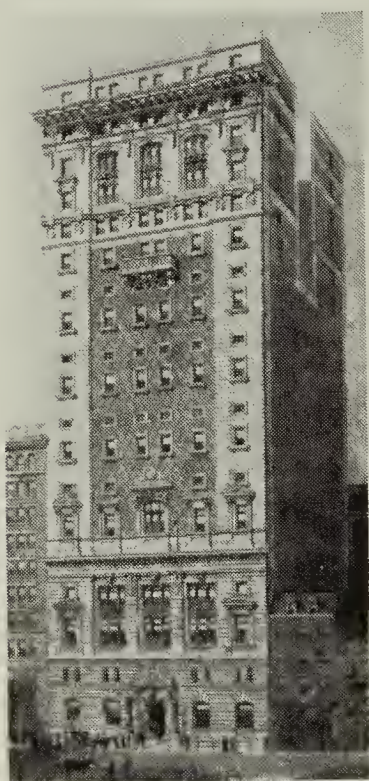
GAS COMPANY BUILDING
San Diego, Cal.
Warren & Wetmore, Architects



BUELL BUILDING
Rochester, N. Y.
J. Foster Warner, Architect



SIBLEY, LINDSEY & CURR CO. BUILDING
Rochester, N. Y.
J. Foster Warner, Architect



MASONIC TEMPLE BUILDING
New York City, N. Y.
H. P. Knowles, Architect



CROISIC BUILDING
New York City, N. Y.
Fred'k C. Brown, Architect

PRESSED PRISM PLATE GLASS COMPANY



CENTRAL BUILDING
Seattle, Wash.
C. R. Aldrich, Architect



NEW YORK BLOCK
Seattle, Wash.



PENN TRAFFIC COMPANY BUILDING
Johnstown, Pa.
Beezer Bros., Architects



HENRY BUILDING
Portland, Ore.
Frank B. Gibson, Architect



RYERSON WAREHOUSE
Chicago, Ill.
Howard Shaw, Architect

PRESSED PRISM PLATE GLASS COMPANY



TRAMWAY BUILDING
Denver, Colo.
Wm. E. Fisher & Bro. Architects



PIONEER TELEPHONE BUILDING
Oklahoma City, Okla.
A. J. Williams, Architect

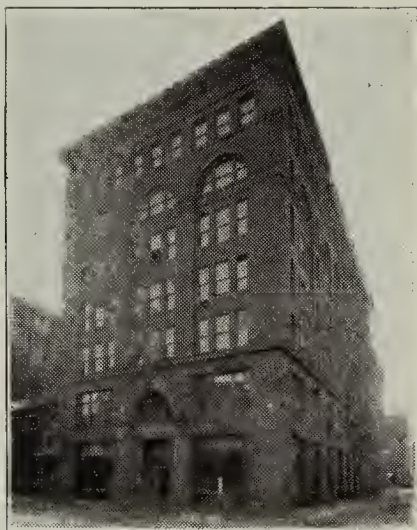


STATION PHILADELPHIA & READING R. R.
Columbia Ave., Philadelphia
Clark & Dillenback, Architects

PRESSED PRISM PLATE GLASS COMPANY



LEBOLT & COMPANY BUILDING
New York City
Simeon B. Eisendrath, Architect



M. STERN & CO. BUILDING
Rochester, N.Y.
Leon Stern, Architect



WESTERN METAL SUPPLY CO. BUILDING
San Diego, Calif.
Henry Lord Gay, Architect

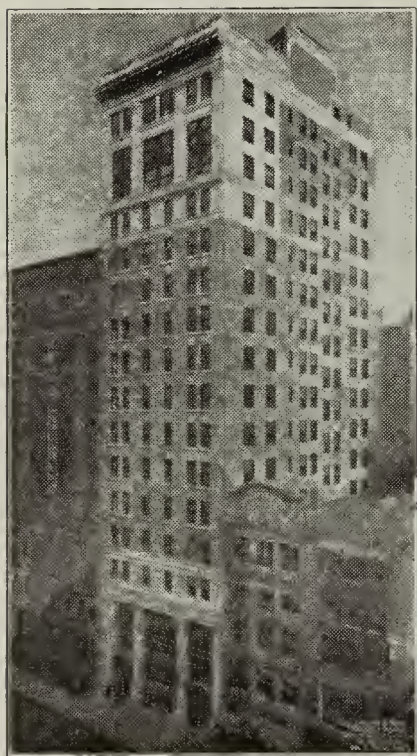


JENKINS ARCADE BUILDING
Pittsburg, Pa.
O. M. Topp, Architect

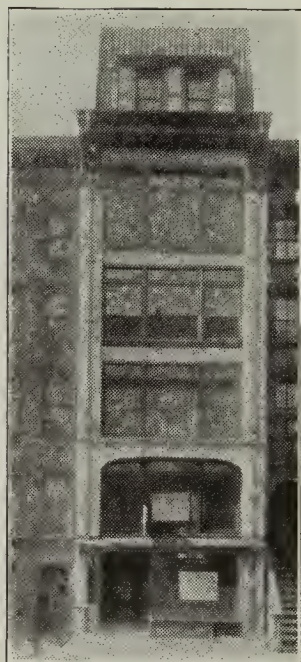


LESEURE BROS. BUILDING
Danville, Ill.
C. M. Lewis, Architect

PRESSED PRISM PLATE GLASS COMPANY



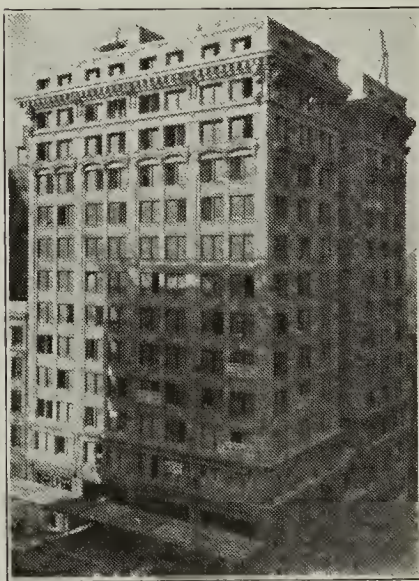
CENTURIAN BUILDING
New York City
Wm. L. Rouse, Architect



NO. 50 W. 46TH ST.
New York City
Erwin Rossbach, Architect



THOMS BUILDINGS
Rochester, N.Y.
J. Foster Warner, Architect



RIALTO BUILDING
Kansas City, Mo.
Smith Rea & Lovett, Architects

A partial list of some of the buildings in which our Imperial Prism-Plate products have been used and specified :

| | LOCATION | ARCHITECT |
|---|---------------------------|--------------------------------|
| American Bank Note..... | New York City, N. Y.... | Kirby, Petit & Green |
| American News Company..... | New York City, N. Y.... | Fay Kellogg |
| American Trust & Savings Bank..... | Chicago, Ill..... | Jarvis Hunt |
| Baum Building..... | Danville, Ill..... | Jenney, Mundie & Jensen |
| Blairsville Armory..... | Blairsville, Pa..... | The Wilkins Company |
| Boston Store..... | Chicago, Ill..... | Holabird & Roche |
| Broadway Maiden Lane..... | New York City, N. Y.... | Clinton & Russell |
| Buell Building..... | Rochester, N. Y..... | J. Foster Warner |
| Carter Building..... | Houston, Tex..... | Sanquinet & Staats |
| Chicago Athletic Club..... | Chicago, Ill..... | Richard E. Schmidt |
| Central Building..... | Seattle, Wash..... | C. R. Aldrich |
| Centurian Apartment..... | New York City, N. Y.... | Wm. L. Rouse |
| Colony Club..... | New York City, N. Y.... | McKim, Mead & White |
| Cornwell Estate..... | Rochester, N. Y..... | C. F. Crandall & J. F. Strobel |
| Croisic Building..... | New York City, N. Y.... | Fredrick C. Brown |
| Crown Point Court House..... | Crown Point, Ind..... | Beers & Beers |
| Denver & Rio Grande R. R. Station..... | Salt Lake City, Utah..... | H. J. Schlacks |
| Devonshire Apartment..... | New York City, N. Y.... | Neville & Bagge |
| Dorchester Apartment..... | New York City, N. Y.... | Neville & Bagge |
| Emporium Dry Goods Store..... | St. Paul, Minn..... | Buechner & Orth |
| Everett Building..... | New York City, N. Y.... | Goodwin, Starrett & Van Vleck |
| Finance Building..... | Kansas City, Mo..... | |
| Fisher Building..... | Chicago, Ill..... | P. J. Weber |
| Foster, A. C..... | Denver, Colo..... | Wm. E. Fisher & Bro. |
| Franklin Savings Institution..... | Greenfield, Mass..... | Marcus T. Reynolds |
| Gas Company..... | San Diego, Cal..... | Warren & Wetmore |
| General Office Building New York Central R.R..... | New York City, N. Y.... | Reed & Stcm |

PRESSED PRISM PLATE GLASS COMPANY

| | LOCATION | ARCHITECT |
|---|--------------------------|---------------------------|
| Halle Bros. Department Store..... | Cleveland, O..... | Henry Bacon |
| Harvester Building..... | Chicago, Ill..... | C. A. Eckstorm |
| Henry Building..... | Portland, Ore..... | Frank B. Gibson |
| Howland Dry Goods Co.'s Store..... | Bridgeport, Conn..... | Isaac Allen |
| Illinois Athletic Club..... | Chicago, Ill..... | Barnett, Haynes & Barnett |
| Illinois Central Freight and Office Building..... | New Orleans, La..... | J. A. Taggart |
| Indianapolis News..... | Indianapolis, Ind..... | Jarvis Hunt |
| Jenkins Arcade Building..... | Pittsburg, Pa..... | O. M. Topp |
| Larkin Building..... | Buffalo, N. Y..... | Frank Lloyd Wright |
| Lancashire Apartment..... | New York City, N. Y..... | Neville & Bagge |
| Lebolt & Company..... | New York City, N. Y..... | Simon B. Eisendrath |
| McCreery Company..... | Pittsburg, Pa..... | D. H. Burnham & Co. |
| McDermott Building..... | Chicago, Ill..... | S. N. Crowen |
| Martha Washington Apartment..... | New York City, N. Y..... | Neville & Bagge |
| Masonic Temple..... | New York City, N. Y..... | W. P. Nolles |
| Mayfair Apartment..... | New York City, N. Y..... | Chas. A. Rich |
| Meier & Frank..... | Portland, Ore..... | Doyle & Patterson |
| Mira Mir Apartment..... | New York City, N. Y..... | G. Ajello |
| Moos Building..... | Chicago, Ill..... | S. N. Crowen |
| Municipal Courts..... | Chicago, Ill..... | Jenney, Mundie & Jensen |
| National Bank of Commerce..... | Kansas City, Mo..... | Jarvis Hunt |
| New York Block..... | Seattle, Wash..... | |
| Pacific Electric Company's..... | Los Angeles, Cal..... | E. S. Cobb |
| Penn Traffic Company's..... | Johnstown, Pa..... | Beezer Bros. |
| Peoples Bank Building..... | Bloomington, Ill..... | Arthur L. Pillsbury |
| Peoples Gas Building..... | Chicago, Ill..... | D. H. Burnham & Co. |
| Peoples Savings Bank..... | Saginaw, Mich..... | |
| Peerless Motor Company..... | Cleveland, O..... | J. Milton Dycr |

PRESSED PRISM PLATE GLASS COMPANY

| | LOCATION | ARCHITECT |
|--|--------------------------|-----------------------------|
| Peter Minuet Apartment..... | New York City, N. Y..... | G. Ajello |
| Pioneer Telephone..... | Oklahoma City, Okla..... | A. J. Williams |
| Reading Terminal Station..... | Philadelphia, Pa..... | P. & R. Engineers |
| Rialto Building..... | Kansas City, Mo..... | Smith, Rea & Lovett |
| Ryerson Warehouse..... | Chicago, Ill..... | Howard Shaw |
| Scarritt Building..... | Kansas City, Mo..... | Root & Siemons |
| Sears, Roebuck & Company's..... | Chicago, Ill..... | Nimmons & Fellows |
| Senator Wm. A. Clark's Residence..... | New York City, N. Y..... | Lord & Hewlett |
| Sibley, Hiram, Building..... | Rochester, N. Y..... | Gordon & Madden |
| Sibley, Lindsey & Curr Company..... | Rochester, N. Y..... | J. Foster Warner |
| Simpson & Company..... | New York City, N. Y..... | McKim, Mead & White |
| Smith Gray Building..... | New York City, N. Y..... | James B. Baker |
| Southern Pacific Headquarters..... | Houston, Tex..... | Jarvis Hunt |
| Southern Pacific Terminal Station..... | Oakland, Cal..... | Jarvis Hunt |
| State Bank of Evanston..... | Evanston, Ill..... | Phillips, Rogers & Woodyatt |
| Steger Building..... | Chicago, Ill..... | Marshall & Fox |
| Stern & Company,..... | Rochester, N..... | Leon Stern |
| Studebaker Building..... | South Bend, Ind..... | S. S. Beman |
| Tramway Building..... | Denver, Colo..... | Wm. E. Fisher & Bro. |
| Trustee Building..... | Seattle, Wash..... | C. R. Aldrich |
| Thoms, C. M., Building..... | Rochester, N. Y..... | J. Foster Warner |
| Union Pacific Headquarters..... | Omaha, Neb..... | Jarvis Hunt |
| Union Passenger Railway Station..... | Kansas City, Mo..... | Jarvis Hunt |
| Union Station..... | Joliet, Ill..... | Jarvis Hunt |
| Vehon Building..... | Chicago, Ill..... | H. L. Ottenheimer |
| Western Metal Supply Company's..... | San Diego, Cal..... | Henry Lord Gay |
| Woods-Stubb Company..... | Louisville, Ky..... | |

And many other large public, office and apartment buildings throughout the country.

HOW TO SPECIFY

SPECIFY

**Imperial Prism-Plate Ornamental
Glass**

Imperial Prism-Plate Glass

OR

Imperial Prism Skylight Glass

MADE BY THE

Pressed Prism Plate Glass Co.
of Morgantown, W. Va.

WE ALSO MANUFACTURE

Imperial Prism Sidewalk Glass. In sizes 9x24 inches, 9x12 inches and 9x6 inches.

**Our Products are Sold by
Jobbers Everywhere**

SEND FOR SAMPLES AND BOOKLETS.

Let us co-operate with you, without charge, in boosting your business. You have many local conditions undoubtedly that will warrant asking us about. *

Your local builders will be interested in the possibilities of prism and decorative partition prismatic pressed glass. The largest glass jobbers in the country are heavy purchasers.

Write for any further information desired.

